

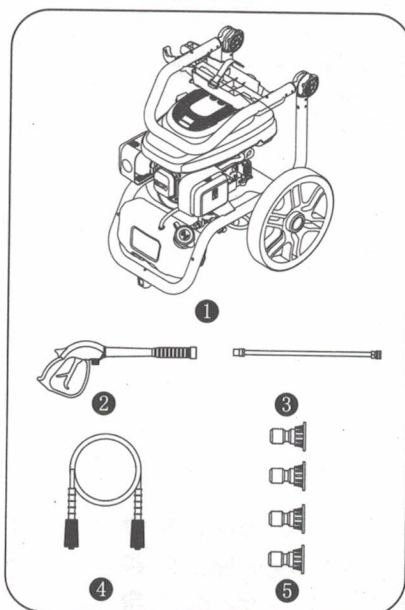
## II. Before Operating

### 1. Unpacking

**Remove the high pressure washer from the Shipping Carton**

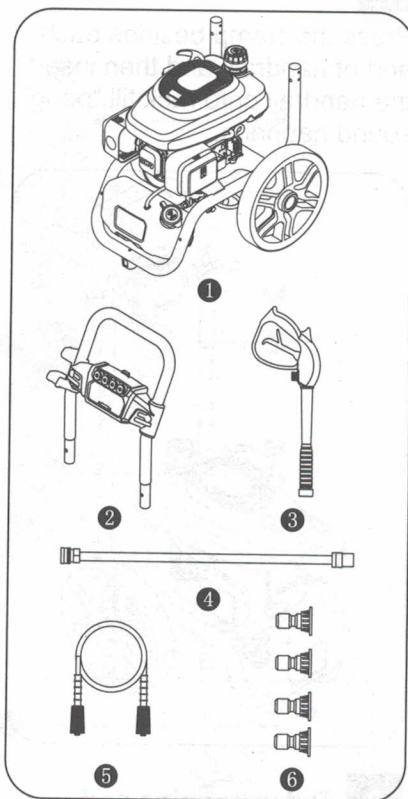
- Place the shipping carton on a solid, flat surface.
- Carefully cut each corner of the carton box from top to bottom. Fold each side flat on the ground.
- Remove everything from the carton except the high pressure washer.

VP-A



- 1 VP-A pressure washer  
2 Pistol grip 4 Pressure pipe  
3 Gun barrel 5 Pressure jet

VP-B



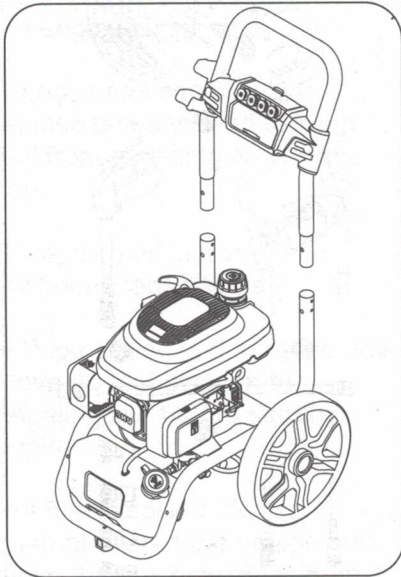
- 1 VP-B pressure washer  
2 Handrail  
3 Pistol grip 5 Pressure pipe  
4 Gun barrel 6 Pressure jet

### 2. Assembly

Your pressure washer requires some assembly. If you have any questions regarding the assembly of your washer, please have your model number and serial number ready and consult your local dealer for help.

## 1 Mounting handrail

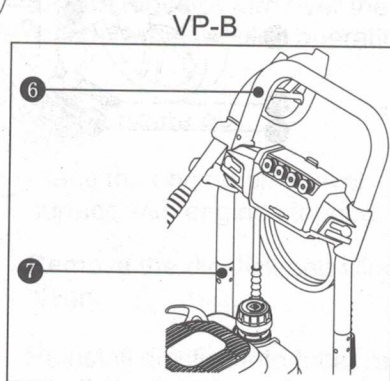
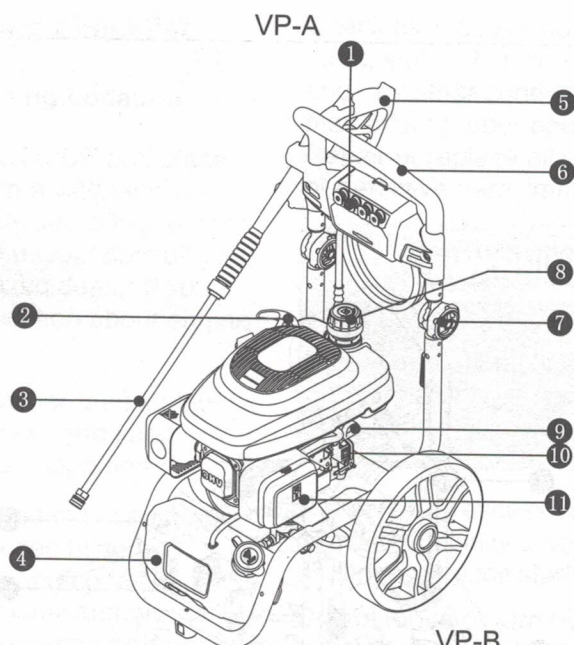
Press the clamp besides each end of handrail, and then insert the handrail onto rack till "peng" sound happens.



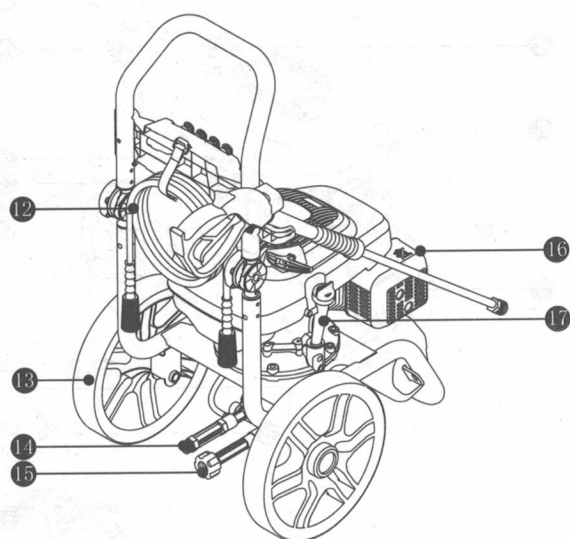
## 2 Put water pipe and pressure jet



### 3. Features and Controls



- |                  |                                  |
|------------------|----------------------------------|
| ① Pressure jet   | ⑦ Connecting nut(handrail clamp) |
| ② Recoil starter | ⑧ Fuel cap                       |
| ③ Gun barrel     | ⑨ Choke lever                    |
| ④ Soap lye pot   | ⑩ Fuel switch                    |
| ⑤ Pistol grip    | ⑪ Air filter                     |
| ⑥ Handrail       |                                  |



- |                  |                |
|------------------|----------------|
| 12 Pressure pipe | 15 Water inlet |
| 13 Wheel         | 16 Muffler     |
| 14 Water outlet  | 17 Dispstick   |