

# DATA SHEET



## Three Phase Induction Motor - Squirrel Cage

|  |  |                      |                  |                      |                |          |          |           |          |          |                        |     |     |                    |     |     |                  |                  |  |
|--|--|----------------------|------------------|----------------------|----------------|----------|----------|-----------|----------|----------|------------------------|-----|-----|--------------------|-----|-----|------------------|------------------|--|
| Customer :   |  |                      |                  |                      |                |          |          |           |          |          |                        |     |     |                    |     |     |                  |                  |  |
| Product line   | : W21 Explosion Proof NEMA Premium Efficiency Three-Phase  |                      |                  |                      |                |          |          |           |          |          |                        |     |     |                    |     |     |                  |                  |  |
| Product code :   | 14284619   |                      |                  |                      |                |          |          |           |          |          |                        |     |     |                    |     |     |                  |                  |  |
| Catalog # :  | 01018XT3E215TC   |                      |                  |                      |                |          |          |           |          |          |                        |     |     |                    |     |     |                  |                  |  |
| Frame : L215TC<br>Output : 10 HP (7.5 kW)<br>Poles : 4<br>Frequency : 60 Hz<br>Rated voltage : 208-230/460 V<br>Rated current : 28.1-25.4/12.7 A<br>L. R. Amperes : 183-165/82.5 A<br>LRC : 6.5x(Code H)<br>No load current : 9.48-11.0/5.50 A<br>Rated speed : 1765 rpm<br>Slip : 1.94 %<br>Rated torque : 29.8 ft.lb<br>Locked rotor torque : 210 %<br>Breakdown torque : 300 %<br>Insulation class : F<br>Service factor : 1.15<br>Design : B | Locked rotor time : 27s (cold) 15s (hot)<br>Temperature rise : 80 K<br>Duty cycle : Cont.(S1)<br>Ambient temperature : -20°C to +40°C<br>Altitude : 1000 m.a.s.l.<br>Protection degree : IP55<br>Cooling method : IC411 - TEFC<br>Mounting : F-1<br>Rotation <sup>1</sup> : Both (CW and CCW)<br>Noise level <sup>2</sup> : 58.0 dB(A)<br>Starting method : Direct On Line<br>Approx. weight <sup>3</sup> : 229 lb   |                      |                  |                      |                |          |          |           |          |          |                        |     |     |                    |     |     |                  |                  |  |
| Output   | 25% 50% 75% 100%   |                      |                  |                      |                |          |          |           |          |          |                        |     |     |                    |     |     |                  |                  |  |
| Efficiency (%)   | 0.000 90.2 91.0 91.7   |                      |                  |                      |                |          |          |           |          |          |                        |     |     |                    |     |     |                  |                  |  |
| Power Factor   | 0.00 0.62 0.75 0.81  |                      |                  |                      |                |          |          |           |          |          |                        |     |     |                    |     |     |                  |                  |  |
| Foundation loads   |  |                      |                  |                      |                |          |          |           |          |          |                        |     |     |                    |     |     |                  |                  |  |
| Max. traction : 389 lb   |  |                      |                  |                      |                |          |          |           |          |          |                        |     |     |                    |     |     |                  |                  |  |
| Max. compression : 618 lb  |  |                      |                  |                      |                |          |          |           |          |          |                        |     |     |                    |     |     |                  |                  |  |
|  | <table border="0"> <tr> <td></td> <td style="text-align: center;"><u>Drive end</u></td> <td style="text-align: center;"><u>Non drive end</u></td> </tr> <tr> <td>Bearing type :</td> <td style="text-align: center;">6308 2RS</td> <td style="text-align: center;">6207 2RS</td> </tr> <tr> <td>Sealing :</td> <td style="text-align: center;">Oil Seal</td> <td style="text-align: center;">Lip Seal</td> </tr> <tr> <td>Lubrication interval :</td> <td style="text-align: center;">0 h</td> <td style="text-align: center;">0 h</td> </tr> <tr> <td>Lubricant amount :</td> <td style="text-align: center;">0 g</td> <td style="text-align: center;">0 g</td> </tr> <tr> <td>Lubricant type :</td> <td colspan="2" style="text-align: center;">Mobil Polyrex EM</td> </tr> </table> |                      | <u>Drive end</u> | <u>Non drive end</u> | Bearing type : | 6308 2RS | 6207 2RS | Sealing : | Oil Seal | Lip Seal | Lubrication interval : | 0 h | 0 h | Lubricant amount : | 0 g | 0 g | Lubricant type : | Mobil Polyrex EM |  |
|  | <u>Drive end</u>   | <u>Non drive end</u> |                  |                      |                |          |          |           |          |          |                        |     |     |                    |     |     |                  |                  |  |
| Bearing type :   | 6308 2RS   | 6207 2RS             |                  |                      |                |          |          |           |          |          |                        |     |     |                    |     |     |                  |                  |  |
| Sealing :  | Oil Seal   | Lip Seal             |                  |                      |                |          |          |           |          |          |                        |     |     |                    |     |     |                  |                  |  |
| Lubrication interval :   | 0 h  | 0 h                  |                  |                      |                |          |          |           |          |          |                        |     |     |                    |     |     |                  |                  |  |
| Lubricant amount :   | 0 g  | 0 g                  |                  |                      |                |          |          |           |          |          |                        |     |     |                    |     |     |                  |                  |  |
| Lubricant type :   | Mobil Polyrex EM   |                      |                  |                      |                |          |          |           |          |          |                        |     |     |                    |     |     |                  |                  |  |
| Notes  |  |                      |                  |                      |                |          |          |           |          |          |                        |     |     |                    |     |     |                  |                  |  |
| This revision replaces and cancel the previous one, which must be eliminated.<br>(1) Looking the motor from the shaft end.<br>(2) Measured at 1m and with tolerance of +3dB(A).<br>(3) Approximate weight subject to changes after manufacturing process.<br>(4) At 100% of full load.   |  |                      |                  |                      |                |          |          |           |          |          |                        |     |     |                    |     |     |                  |                  |  |
| These are average values based on tests with sinusoidal power supply, subject to the tolerances stipulated in NEMA MG-1.   |  |                      |                  |                      |                |          |          |           |          |          |                        |     |     |                    |     |     |                  |                  |  |
| Rev.   | Changes Summary  | Performed            | Checked          | Date                 |                |          |          |           |          |          |                        |     |     |                    |     |     |                  |                  |  |
| Performed by   |  |                      |                  |                      |                |          |          |           |          |          |                        |     |     |                    |     |     |                  |                  |  |
| Checked by   |  |                      | Page             | Revision             |                |          |          |           |          |          |                        |     |     |                    |     |     |                  |                  |  |
| Date   | 15/02/2022   |                      | 1 / 2            |                      |                |          |          |           |          |          |                        |     |     |                    |     |     |                  |                  |  |

# DATA SHEET

## Three Phase Induction Motor - Squirrel Cage



Customer : \_\_\_\_\_

### Thermal protection

| ID | Application | Type                 | Quantity  | Sensing Temperature |
|----|-------------|----------------------|-----------|---------------------|
| 1  | Winding     | Thermostat - 2 wires | 1 x Phase | 155 °C              |

| Rev.         | Changes Summary | Performed | Checked | Date     |
|--------------|-----------------|-----------|---------|----------|
| Performed by |                 |           |         |          |
| Checked by   |                 |           | Page    | Revision |
| Date         | 15/02/2022      |           | 2 / 2   |          |

MADE IN BRAZIL


**W21X NEMA**  
**Premium**

14284619

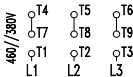
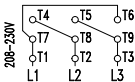
CC029A

*Inverter Duty Motor*  
*Severe Duty*


LISTED

MODEL 01018XT3E215TC

|   |              |                    |                   |
|---|--------------|--------------------|-------------------|
| PH 3  | FR L215TC    |                    |                   |
| HP(kW) 10.0(7.5)  |              | HZ 60              | IP55              |
| V 230/460   |              | A 25.4/12.7        |                   |
| RPM 1765  |              | NEMA NOM EFF 91.7% |                   |
| PF 0.81   |              | SFA 29.2/14.6      | DES B             |
| INS CL F $\Delta$ T 80 K                                  |              | SF 1.15            | ENCL TEFC         |
| DUTY CONT.  |              | CODE H             | ALT 1000 m.a.s.l. |
| AMB 40°C  | USABLE @208V | 28.1 A             | SF 1.15 SFA 32.3  |
| AMB 55°C SF1.0  |              |                    |                   |
| 10HP 7.5kW 50Hz 380V 15.3A 1450RPM SF1.00 EFF 88.5% (IE1) |              |                    |                   |


 → 6308-2RS MOBIL POLYREX EM  
 → 6207-2RS

236 Lbs


 TEMP CODE T3C  
 CSA/UL: Class I - Div. 1 - Groups C and D  
 CSA: Class II - Div. 1 - Groups F and G  
 CSA: Class I - Zone 1 - IIB

EXPLOSION PROOF MOTOR

FOR USE ON VPWM VFD 1000:1VT, 20:1CT, 1.0SF, T3C, AMB 40°C.

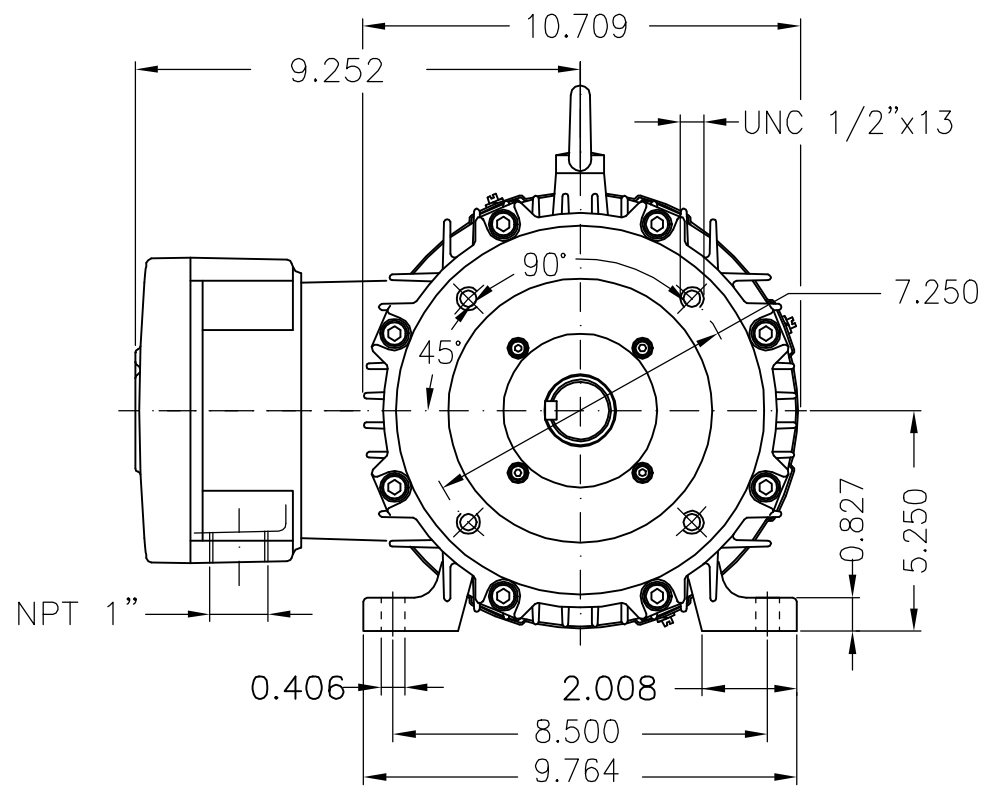
|                   |   |
|-------------------|---|
| EIXO/SHAFT        |   |
| PADRÃO/STANDARD   | X |
| OPCIONAL/OPTIONAL |   |
| ESPECIAL/SPECIAL  |   |

Dimensões em polegada  
Dimensions in inches

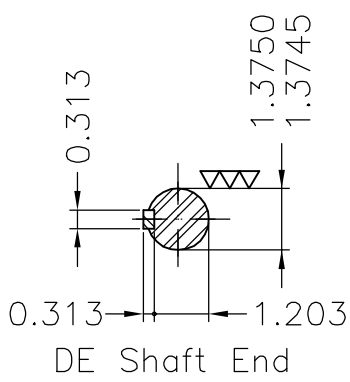
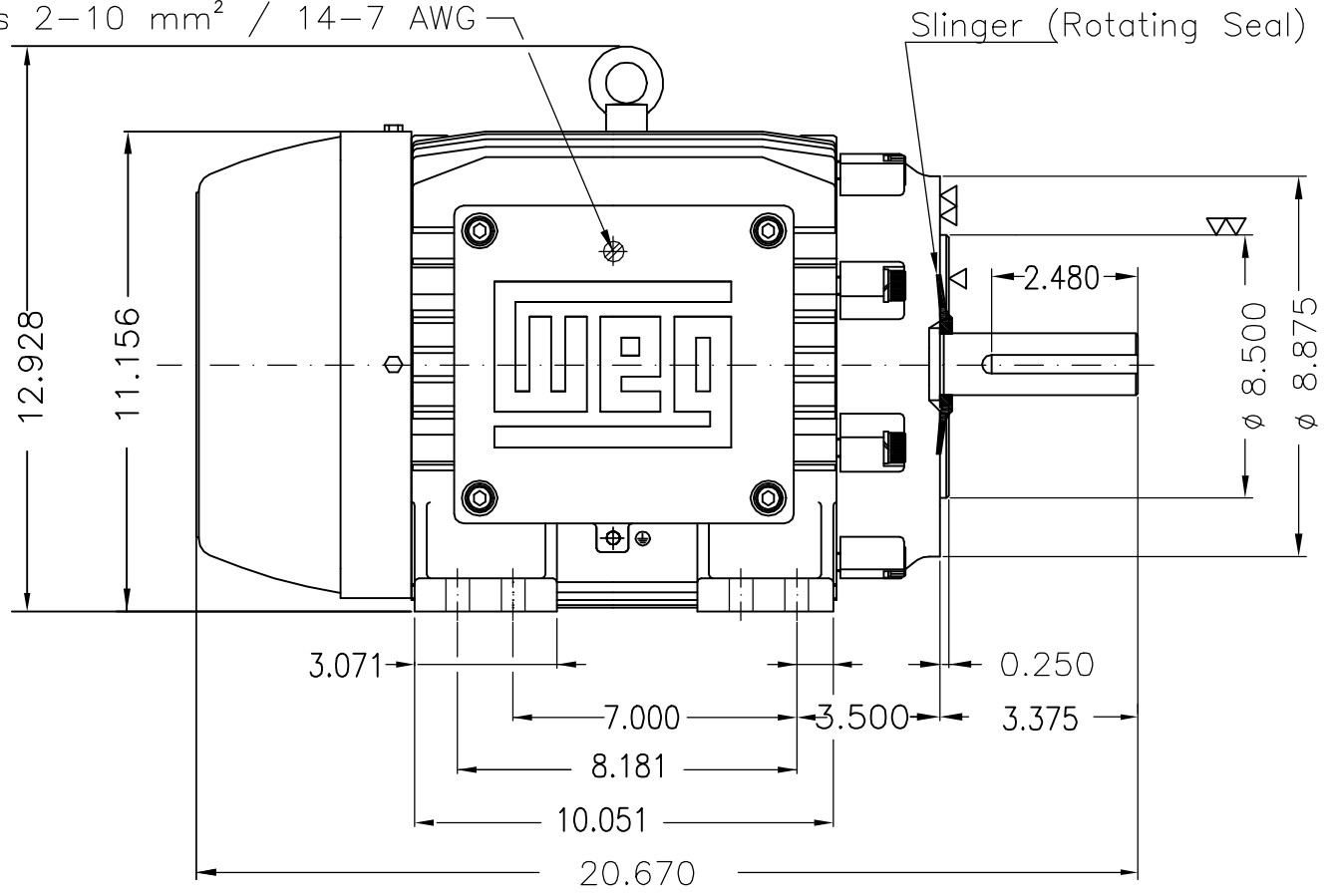
**CERTIFIED  
WEG MOTORES**  
Certified document.  
Not subject to changes.

THIS IS AN UPDATED REVISION, THE  
PREVIOUS ONE MUST BE DISREGARDED.

A  
B  
C  
D  
E



Grounding for leads 2-10 mm<sup>2</sup> / 14-7 AWG



|  |            |   |                |                     |             |               |
|--|------------|---|----------------|---------------------|-------------|---------------|
| Caixa de ligação W21 / W21 terminal box        |            |   |                |                     |             |               |
| Cor RAL 5009 / Color RAL 5009                  |            |   |                |                     |             |               |
| Plano de pintura 202P / Painting plan 202P     |            |   |                |                     |             |               |
| Forma construtiva NEMA F-1 / Mounting NEMA F-1 |            |   |                |                     |             |               |
| Forma construtiva B34D / Mounting B34R(D)      |            |   |                |                     |             |               |
| <b>WEG ELECTRIC CORPORATION - WEG</b>          |            |   |                |                     |             |               |
| 500001594952                                   |            | ALTERADO CONF. CLAIM 415204042                              | RICLAV         |                     | 20.05.2019  | 03            |
| 500001427824                                   |            | REMOVED HIDDEN NOTE CODE 485                                | ERIC           | MENSOR              | MENSOR      | 13.03.2018 02 |
| ECM  | LOC        | RESUMO MODIFICAÇÃO  | EXECUTADO      | VERIFICADO          | LIBERADO    | DATA          |
| ECM  | LOC        | SUMMARY OF MODIFICATIONS                                    | EXECUTED       | CHECKED             | RELEASED    | DATE          |
| EXEC. /EXECUTED                                | NSCHMIDT   | THREE-PHASE EXPLOSION PROOF MOTOR<br>FRAME L215TC IP55 TEFC | 10005474706    |                     |             |               |
| VERIF. /CHECKED                                |            |   | 000            | 03                  |             |               |
| LIBER. /RELEASED                               | DANIELAW   |   |                |                     |             |               |
| DATA LB /REL DT                                | 18.01.2018 | WMO   | Jaraguá do Sul | Product Engineering | FOLHA/SHEET | 1 / 1         |

10 HP 04 Poles 60Hz 414924098/1

UNCONTROLLED COPY RELEASED ZME A3