

DATA SHEET



Three Phase Induction Motor - Squirrel Cage

Customer : _____				
Product line : W21 Explosion Proof NEMA Premium Efficiency Three-Phase		Product code : 14303659		
		Catalog # : 00518XT3E184TC		
Frame : 182/4TC Insulation class : F Duty cycle : Cont.(S1) Ambient temperature : -20°C to +40°C Altitude : 1000 m.a.s.l. Protection degree : IP55 Design : B		Cooling method : IC411 - TEFC Mounting : F-1 Rotation ¹ : Both (CW and CCW) Starting method : Direct On Line Approx. weight ³ : 135 lb Moment of inertia (J) : 0.3695 sq.ft.lb		
Output [HP]	5		5	
Poles	4		4	
Frequency [Hz]	60		50	
Rated voltage [V]	230/460		380	
Rated current [A]	13.1/6.57		7.83	
L. R. Amperes [A]	93.3/46.6		47.8	
LRC [A]	7.1x(Code J)		6.1x(Code G)	
No load current [A]	6.20/3.10		3.10	
Rated speed [RPM]	1750		1435	
Slip [%]	2.78		4.33	
Rated torque [ft.lb]	15.0		18.3	
Locked rotor torque [%]	229		210	
Breakdown torque [%]	300		229	
Service factor	1.15		1.00	
Temperature rise	80 K		80 K	
Locked rotor time	43s (cold) 24s (hot)		36s (cold) 20s (hot)	
Noise level ²	56.0 dB(A)		56.0 dB(A)	
Efficiency (%)	25%	85.3	85.7	
	50%	86.5	86.0	
	75%	88.5	86.5	
	100%	89.5	86.5	
Power Factor	25%	0.36	0.43	
	50%	0.59	0.67	
	75%	0.71	0.77	
	100%	0.79	0.83	
Bearing type : <u>Drive end</u> 6307 2RS <u>Non drive end</u> 6206 2RS Sealing : Oil Seal Lip Seal Lubrication interval : - - Lubricant amount : - - Lubricant type : Mobil Polyrex EM		Foundation loads Max. traction : 269 lb Max. compression : 404 lb		
Notes USABLE @208V 14.5A SF 1.15 SFA 16.7A				
This revision replaces and cancel the previous one, which must be eliminated. (1) Looking the motor from the shaft end. (2) Measured at 1m and with tolerance of +3dB(A). (3) Approximate weight subject to changes after manufacturing process. (4) At 100% of full load.		These are average values based on tests with sinusoidal power supply, subject to the tolerances stipulated in NEMA MG-1.		
Rev.	Changes Summary		Performed	Checked
Performed by				
Checked by			Page	Revision
Date	12/10/2023		1 / 2	

DATA SHEET



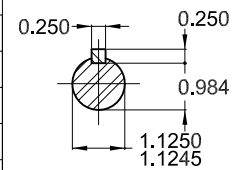
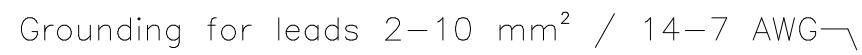
Three Phase Induction Motor - Squirrel Cage

Customer : _____

Thermal protection

ID	Application	Type	Quantity	Sensing Temperature
1	Winding	Thermostat - 2 wires	1 x Phase	155 °C

Rev.	Changes Summary		Performed	Checked	Date
Performed by				Page	Revision
Checked by				2 / 2	
Date	12/10/2023				

Dimensions in inches


W21X NEMA
Premium

14303659



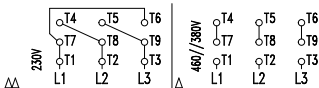
LISTED

CC029A

Inverter Duty Motor
Severe Duty

MODEL 00518XT3E184TC

PH 3	FR 182/4TC	
HP(kW) 5.0(3.7)	HZ 60	IP55
V 230/460	A 13.1/6.57	
RPM 1750	NEMA NOM EFF 89.5%	
PF 0.79	SFA 15.1/7.56	DES B
INS CL F Δ T 80 K	SF 1.15	ENCL TEFC
DUTY CONT.	CODE J	ALT 1000 m.a.s.l.
AMB 40°C		
AMB 55°C SF1.0		
5.0HP 3.7kW 50Hz 380V 7.83A 1435RPM SF1.00 EFF 86.5% (IE2)		


 → 6307-2RS MOBIL POLYREX EM
 → 6206-2RS

135 Lbs


 TEMP CODE T3C
 CSA/UL: Class I - Div. 1 - Groups C and D
 CSA: Class II - Div. 1 - Groups F and G
 CSA: Class I - Zone 1 - IIB

EXPLOSION PROOF MOTOR

FOR USE ON VPWM VFD 1000:1VT, 20:1CT, 1.0SF, T3C, AMB 40°C.