

DATA SHEET



Three Phase Induction Motor - Squirrel Cage

Customer :					
Product line : W21 Explosion Proof NEMA Premium Efficiency Three-Phase		Product code : 14284314			
		Catalog # : 00536XT3E184TC			
Frame : 182/4TC	Insulation class : F	Cooling method : IC411 - TEFC	Mounting : F-1		
Duty cycle : Cont.(S1)	Ambient temperature : -20°C to +40°C	Rotation ¹ : Both (CW and CCW)	Starting method : Direct On Line		
Altitude : 1000 m.a.s.l.	Protection degree : IP55	Approx. weight ³ : 134 lb	Moment of inertia (J) : 0.1889 sq.ft.lb		
Design : B					
Output [HP]	5		5		
Poles	2		2		
Frequency [Hz]	60		50		
Rated voltage [V]	230/460		380		
Rated current [A]	12.2/6.10		7.30		
L. R. Amperes [A]	91.5/45.7		41.6		
LRC [A]	7.5x(Code J)		5.7x(Code F)		
No load current [A]	4.40/2.20		2.15		
Rated speed [RPM]	3490		2850		
Slip [%]	3.06		5.00		
Rated torque [ft.lb]	7.52		9.21		
Locked rotor torque [%]	250		200		
Breakdown torque [%]	380		280		
Service factor	1.15		1.00		
Temperature rise	80 K		80 K		
Locked rotor time	46s (cold) 26s (hot)		46s (cold) 26s (hot)		
Noise level ²	69.0 dB(A)		64.0 dB(A)		
Efficiency (%)	25%	84.3	86.9		
	50%	85.5	86.5		
	75%	87.5	87.5		
	100%	88.5	86.5		
Power Factor	25%	0.47	0.53		
	50%	0.70	0.76		
	75%	0.81	0.86		
	100%	0.86	0.89		
Bearing type	Drive end : 6307 2RS	Non drive end : 6206 2RS	Foundation loads		
Sealing	Oil Seal	Lip Seal	Max. traction : 131 lb		
Lubrication interval	-	-	Max. compression : 265 lb		
Lubricant amount	-	-			
Lubricant type	Mobil Polyrex EM				
Notes USABLE @208V 13.5A SF 1.15 SFA 15.5A					
This revision replaces and cancel the previous one, which must be eliminated. (1) Looking the motor from the shaft end. (2) Measured at 1m and with tolerance of +3dB(A). (3) Approximate weight subject to changes after manufacturing process. (4) At 100% of full load.			These are average values based on tests with sinusoidal power supply, subject to the tolerances stipulated in NEMA MG-1.		
Rev.	Changes Summary		Performed	Checked	Date
Performed by					
Checked by				Page	Revision
Date	12/10/2023			1 / 2	

DATA SHEET



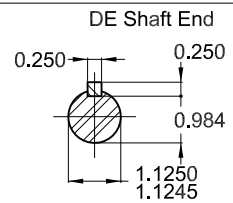
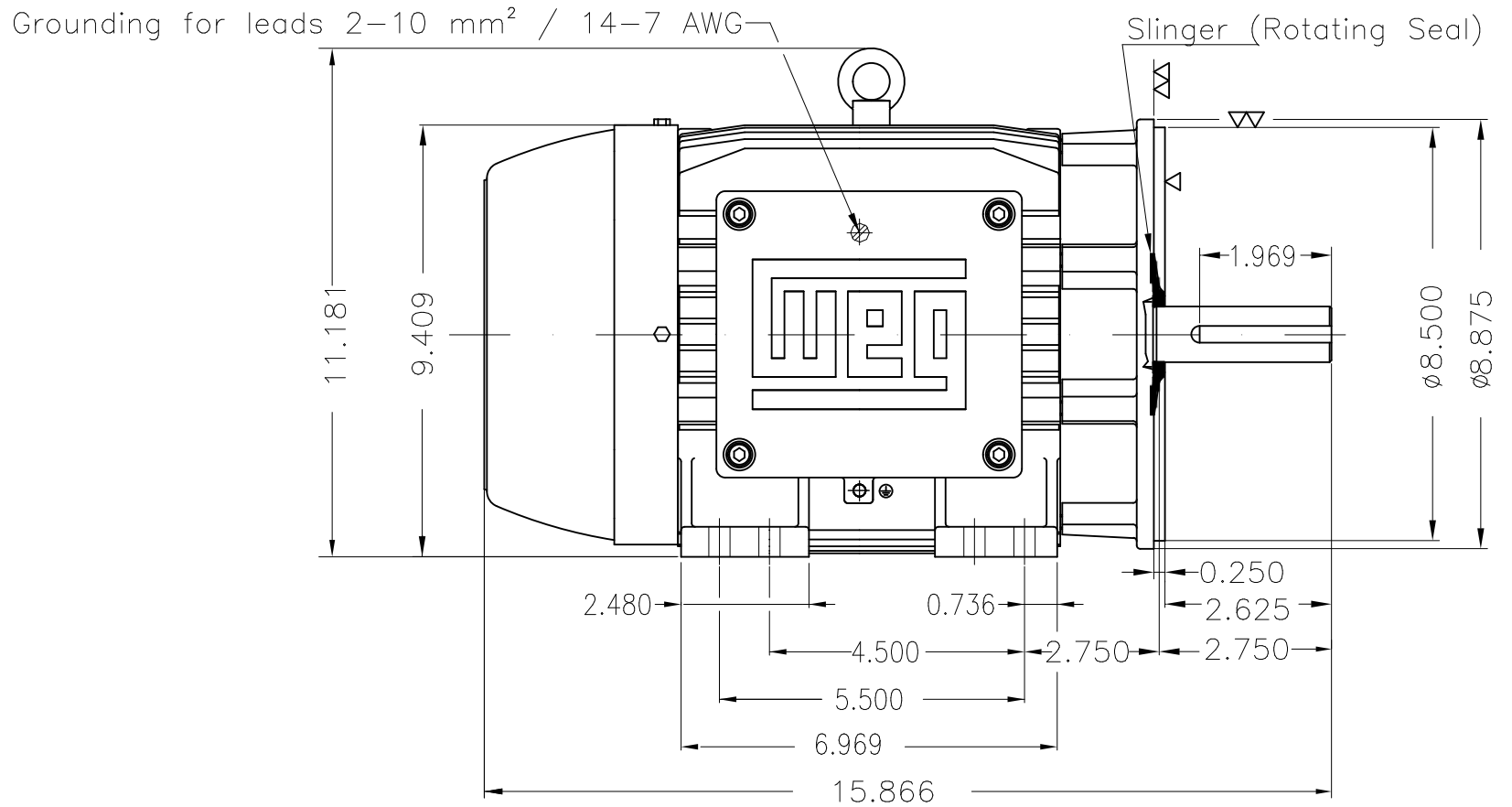
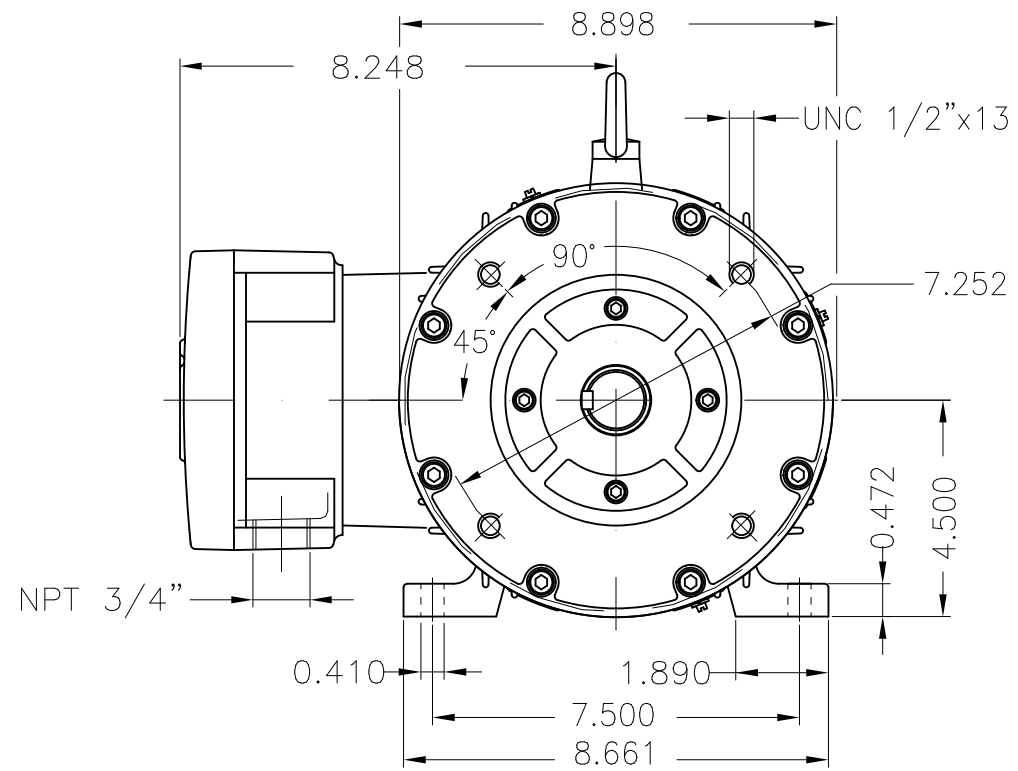
Three Phase Induction Motor - Squirrel Cage

Customer : _____

Thermal protection

ID	Application	Type	Quantity	Sensing Temperature
1	Winding	Thermostat - 2 wires	1 x Phase	155 °C

Rev.	Changes Summary	Performed	Checked	Date
Performed by		Page 2 / 2		Revision
Checked by				
Date	12/10/2023			



Color RAL 5009
 Painting plan 202P
 Mounting NEMA F-1
 Mounting B34R(D)

5 HP 02 Poles 60 Hz A

						HYBRISUSER								00	
ECM	LOC	SUMMARY OF MODIFICATIONS				EXECUTED	CHECKED	RELEASED	DATE	VER					
EXECUTED	HYBRISUSER	THREE PH. MOTOR EXPLOSION PROOF NEMA PREM. EFF.		FRAME 182/4TC IP55 TEFC		PREVIEW		WDD 00		SHEET 1 / 1					
CHECKED		WMO Jaragua do Sul		Product Engineering											
RELEASED															
REL. DATE															

MADE IN BRAZIL

**W21X NEMA**
Premium

14284314



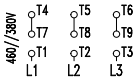
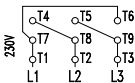
LISTED

CC029A

Inverter Duty Motor
Severe Duty

MODEL 00536XT3E184TC

PH 3	FR 182/4TC	
HP(kW) 5.0(3.7)		HZ 60 IP55
V 230/460		A 12.2/6.10
RPM 3490		NEMA NOM EFF 88.5%
PF 0.86	SFA 14.0/7.01	DES B
INS CL F Δ T 80 K	SF 1.15	ENCL TEFC
DUTY CONT.	CODE J	ALT 1000 m.a.s.l.
AMB 40°C		
AMB 55°C	SF1.0	
5.0HP 3.7kW 50Hz 380V 7.30A 2850RPM SF1.00 EFF 86.5% (IE2)		



→ 6307-2RS MOBIL POLYREX EM
→ 6206-2RS

134 Lbs



TEMP CODE T3C
CSA/UL: Class I - Div. 1 - Groups C and D
CSA: Class II - Div. 1 - Groups F and G
CSA: Class I - Zone 1 - IIB

EXPLOSION PROOF MOTOR

FOR USE ON VPWM VFD 1000:1VT, 20:1CT, 1.0SF, T3C, AMB 40°C.