

# DATA SHEET



## Three Phase Induction Motor - Squirrel Cage

Customer : _____				
Product line : W21 Explosion Proof NEMA Premium Efficiency Three-Phase		Product code : 14284619		
		Catalog # : 01018XT3E215TC		
Frame : L215TC Insulation class : F Duty cycle : Cont.(S1) Ambient temperature : -20°C to +40°C Altitude : 1000 m.a.s.l. Protection degree : IP55 Design : B		Cooling method : IC411 - TEFC Mounting : F-1 Rotation <sup>1</sup> : Both (CW and CCW) Starting method : Direct On Line Approx. weight <sup>3</sup> : 229 lb Moment of inertia (J) : 1.34 sq.ft.lb		
Output [HP]	10		10	
Poles	4		4	
Frequency [Hz]	50		60	
Rated voltage [V]	380		208-230/460	
Rated current [A]	15.3		28.0-25.3/12.7	
L. R. Amperes [A]	87.2		182-164/82.5	
LRC [A]	5.7x(Code G)		6.5x(Code H)	
No load current [A]	5.30		9.48-11.0/5.50	
Rated speed [RPM]	1450		1765	
Slip [%]	3.33		1.94	
Rated torque [ft.lb]	36.2		29.8	
Locked rotor torque [%]	165		210	
Breakdown torque [%]	220		270	
Service factor	1.00		1.15	
Temperature rise	80 K		80 K	
Locked rotor time	36s (cold) 20s (hot)		27s (cold) 15s (hot)	
Noise level <sup>2</sup>	56.0 dB(A)		58.0 dB(A)	
Efficiency (%)	25%	0.000	0.000	
	50%	90.2	90.2	
	75%	89.5	91.0	
	100%	88.5	91.7	
Power Factor	25%	0.00	0.00	
	50%	0.70	0.62	
	75%	0.80	0.75	
	100%	0.84	0.81	
Bearing type : <u>Drive end</u> 6308 2RS <u>Non drive end</u> 6207 2RS Sealing : Oil Seal Lip Seal Lubrication interval : 0 h 0 h Lubricant amount : 0 g 0 g Lubricant type : Mobil Polyrex EM		Foundation loads Max. traction : 338 lb Max. compression : 568 lb		
Notes				
This revision replaces and cancel the previous one, which must be eliminated. (1) Looking the motor from the shaft end. (2) Measured at 1m and with tolerance of +3dB(A). (3) Approximate weight subject to changes after manufacturing process. (4) At 100% of full load.		These are average values based on tests with sinusoidal power supply, subject to the tolerances stipulated in NEMA MG-1.		
Rev.	Changes Summary		Performed	Checked
Performed by			Page 1 / 2	Revision
Checked by				
Date	12/10/2023			

# DATA SHEET



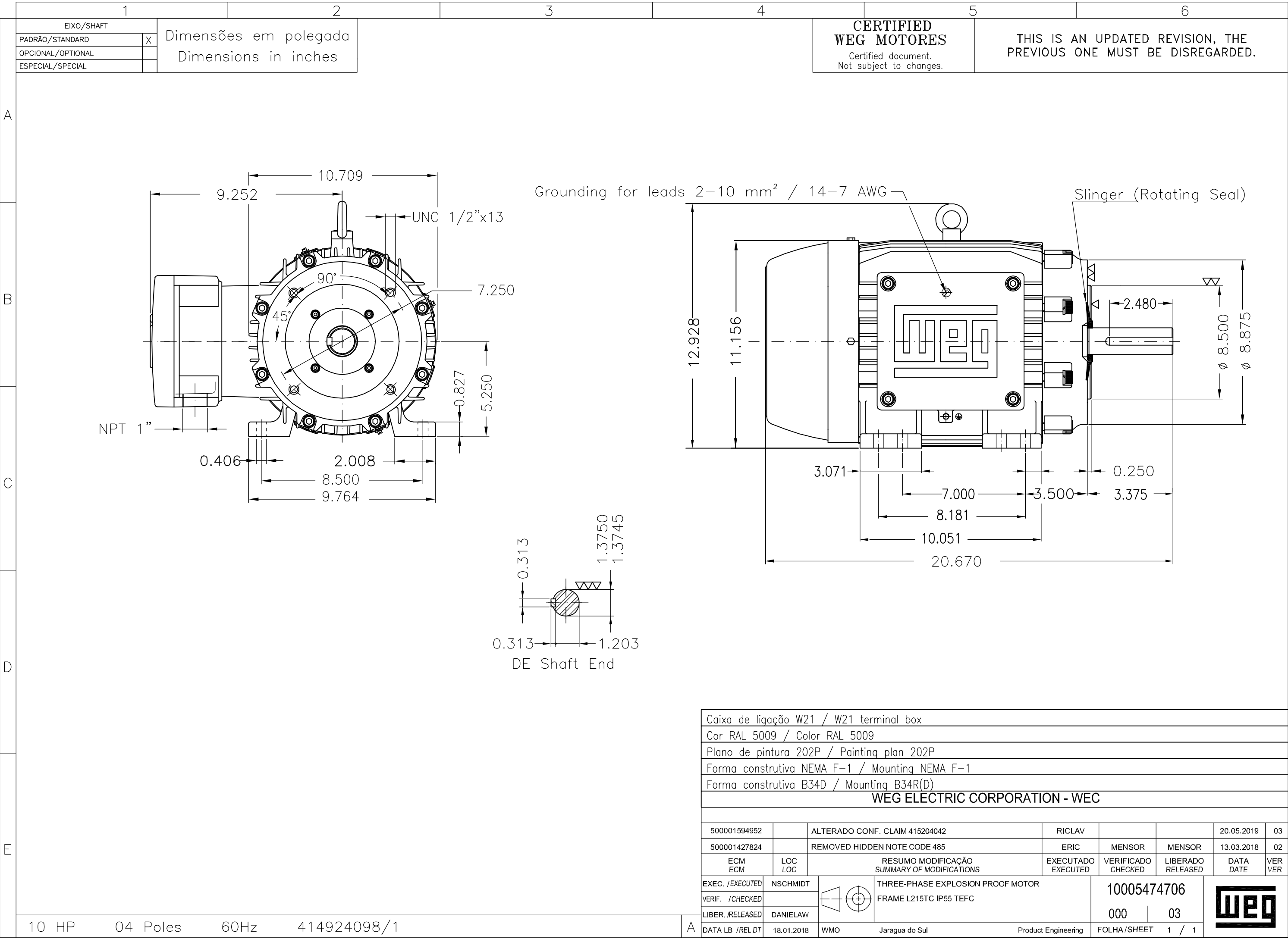
## Three Phase Induction Motor - Squirrel Cage

Customer : \_\_\_\_\_

### Thermal protection

ID	Application	Type	Quantity	Sensing Temperature
1	Winding	Thermostat - 2 wires	1 x Phase	155 °C

Rev.	Changes Summary		Performed	Checked	Date
Performed by				Page	Revision
Checked by				2 / 2	
Date	12/10/2023				




**W21X NEMA**  
**Premium**

14284619

CC029A

*Inverter Duty Motor*  
*Severe Duty*


LISTED

MODEL 01018XT3E215TC

PH 3 | FR L215TC

HP(kW) 10.0(7.5)

HZ 60

IP55

V 230/460

A 25.4/12.7

RPM 1765

NEMA NOM EFF 91.7%

PF 0.81

SFA 29.2/14.6

DES B

INS CL F  $\Delta$ T 80 K | SF 1.15

ENCL TEFC

DUTY CONT.

CODE H

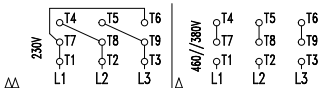
ALT 1000

m.a.s.l.

AMB 40°C

AMB 55°C SF1.0

10HP 7.5kW 50Hz 380V 15.3A 1450RPM SF1.00 EFF 88.5% (IE1)


 → 6308-2RS MOBIL POLYREX EM  
 → 6207-2RS

236 Lbs


 TEMP CODE T3C  
 CSA/UL: Class I - Div. 1 - Groups C and D  
 CSA: Class II - Div. 1 - Groups F and G  
 CSA: Class I - Zone 1 - IIB

EXPLOSION PROOF MOTOR

FOR USE ON VPWM VFD 1000:1VT, 20:1CT, 1.0SF, T3C, AMB 40°C.