

# DATA SHEET



## Three Phase Induction Motor - Squirrel Cage

|  |                                      |  |   |          |
|--|--------------------------------------|--|---|----------|
| Customer :   |                                      |  |   |          |
| Product line : W21 Explosion Proof NEMA Premium Efficiency Three-Phase   |                                      | Product code : 14380393  |   |          |
|  |                                      | Catalog # : 01036XT3E215TC   |   |          |
| Frame : 213/5TC  | Insulation class : F                 | Cooling method : IC411 - TEFC  | Mounting : F-1                          |          |
| Duty cycle : Cont.(S1)   | Ambient temperature : -20°C to +40°C | Rotation <sup>1</sup> : Both (CW and CCW)  | Starting method : Direct On Line        |          |
| Altitude : 1000 m.a.s.l.   | Protection degree : IP55             | Approx. weight <sup>3</sup> : 208 lb   | Moment of inertia (J) : 0.5512 sq.ft.lb |          |
| Design : B   |                                      |  |   |          |
| Output [HP]  | 10                                   |  | 10                                      |          |
| Poles  | 2                                    |  | 2                                       |          |
| Frequency [Hz]   | 60                                   |  | 50                                      |          |
| Rated voltage [V]  | 230/460                              |  | 380                                     |          |
| Rated current [A]  | 23.4/11.7                            |  | 14.1                                    |          |
| L. R. Amperes [A]  | 161/80.7                             |  | 88.8                                    |          |
| LRC [A]  | 6.9x(Code H)                         |  | 6.3x(Code G)                            |          |
| No load current [A]  | 7.20/3.60                            |  | 3.50                                    |          |
| Rated speed [RPM]  | 3525                                 |  | 2895                                    |          |
| Slip [%]   | 2.08                                 |  | 3.50                                    |          |
| Rated torque [ft.lb]   | 14.9                                 |  | 18.1                                    |          |
| Locked rotor torque [%]  | 210                                  |  | 150                                     |          |
| Breakdown torque [%]   | 280                                  |  | 220                                     |          |
| Service factor   | 1.15                                 |  | 1.00                                    |          |
| Temperature rise   | 80 K                                 |  | 80 K                                    |          |
| Locked rotor time  | 54s (cold) 30s (hot)                 |  | 36s (cold) 20s (hot)                    |          |
| Noise level <sup>2</sup>   | 72.0 dB(A)                           |  | 67.0 dB(A)                              |          |
| Efficiency (%)   | 25%                                  |  |   |          |
|  | 50%                                  | 88.5   |   | 88.5     |
|  | 75%                                  | 90.2   |   | 89.2     |
|  | 100%                                 | 90.2   |   | 88.5     |
| Power Factor   | 25%                                  |  |   |          |
|  | 50%                                  | 0.79   |   | 0.85     |
|  | 75%                                  | 0.87   |   | 0.90     |
|  | 100%                                 | 0.89   |   | 0.91     |
| Bearing type : 6308 2RS  | Drive end                            | Non drive end  | Foundation loads                        |          |
| Sealing : Oil Seal   |                                      | Lip Seal   | Max. traction : 159 lb                  |          |
| Lubrication interval : -   |                                      | -  | Max. compression : 368 lb               |          |
| Lubricant amount : -   |                                      | -  |   |          |
| Lubricant type : Mobil Polyrex EM  |                                      |  |   |          |
| Notes<br>USABLE @208V 25.7A SF 1.15 SFA 29.5A  |                                      |  |   |          |
| This revision replaces and cancel the previous one, which must be eliminated.<br>(1) Looking the motor from the shaft end.<br>(2) Measured at 1m and with tolerance of +3dB(A).<br>(3) Approximate weight subject to changes after manufacturing process.<br>(4) At 100% of full load. |                                      | These are average values based on tests with sinusoidal power supply, subject to the tolerances stipulated in NEMA MG-1. |   |          |
| Rev.   | Changes Summary                      |  | Performed                               | Checked  |
|  |                                      |  |   |          |
| Performed by   |                                      |  | Page                                    | Revision |
| Checked by   |                                      |  |   |          |
| Date   | 12/10/2023                           |  | 1 / 2                                   |          |

# DATA SHEET



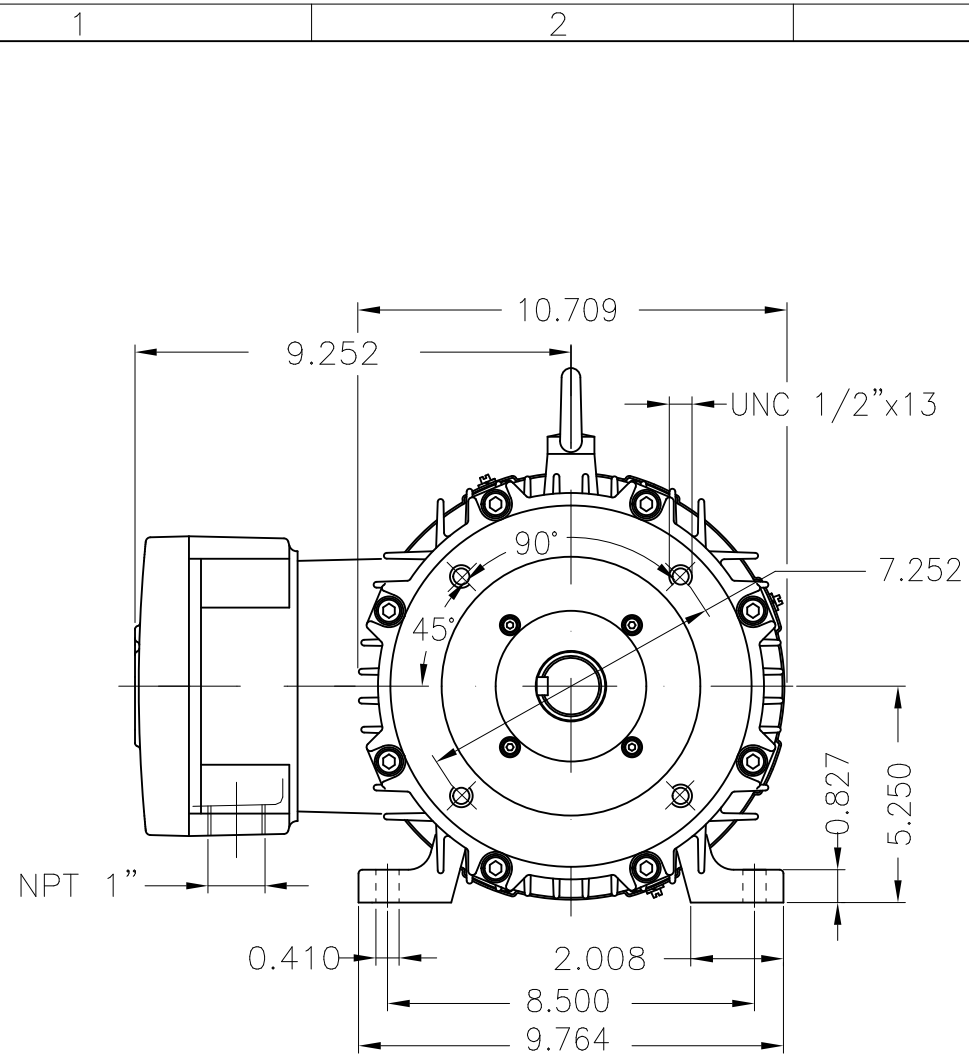
## Three Phase Induction Motor - Squirrel Cage

Customer : \_\_\_\_\_

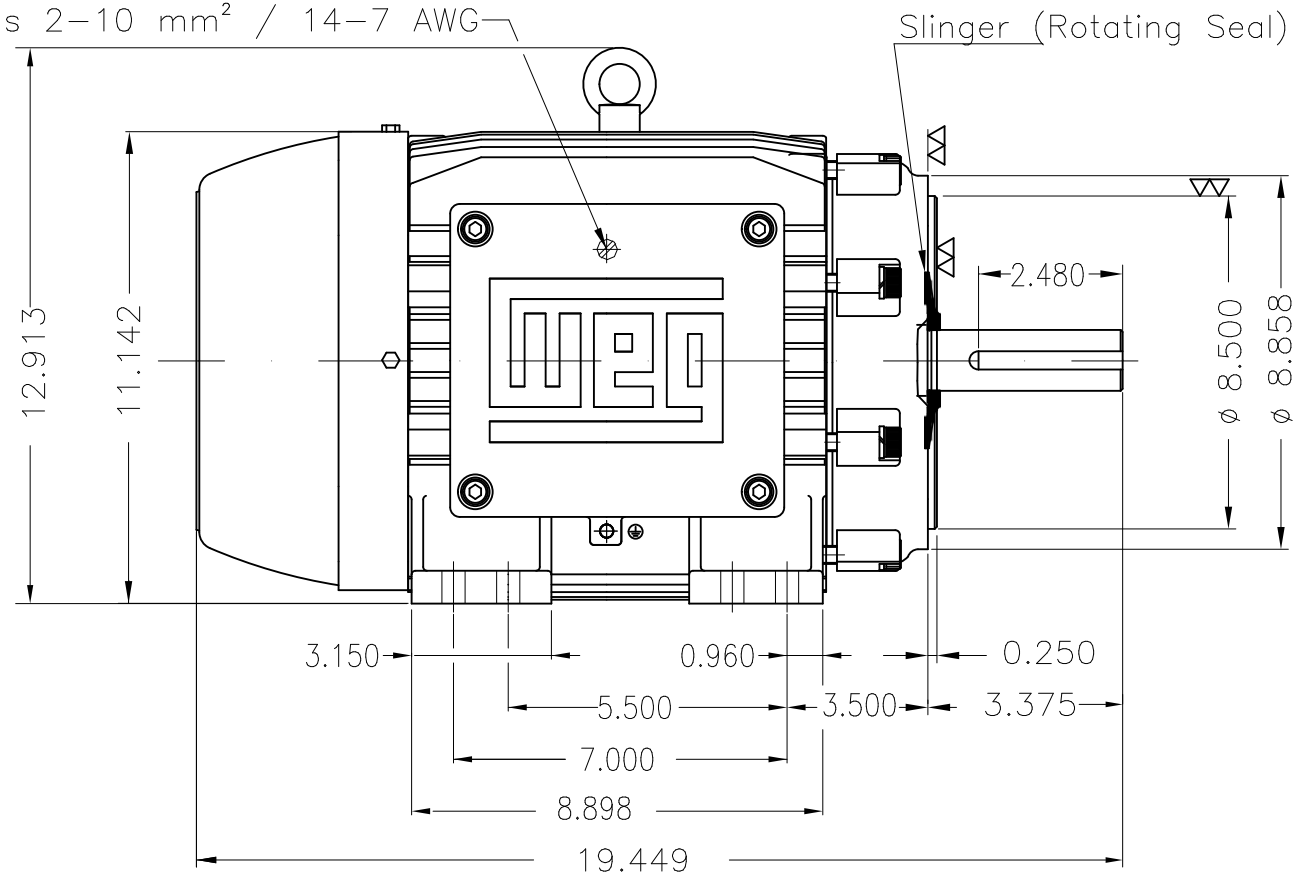
### Thermal protection

| ID | Application | Type                 | Quantity  | Sensing Temperature |
|----|-------------|----------------------|-----------|---------------------|
| 1  | Winding     | Thermostat - 2 wires | 1 x Phase | 155 °C              |

| Rev.         | Changes Summary | Performed     | Checked | Date     |
|--------------|-----------------|---------------|---------|----------|
|              |                 |               |         |          |
| Performed by |                 | Page<br>2 / 2 |         | Revision |
| Checked by   |                 |               |         |          |
| Date         | 12/10/2023      |               |         |          |



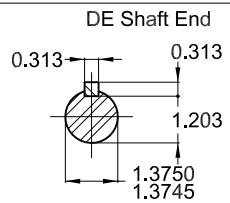
Grounding for leads 2-10 mm<sup>2</sup> / 14-7 AWG



10 HP 02 Poles 60 Hz

A

Color RAL 5009  
 Painting plan 202P  
 Mounting NEMA F-1  
 Mounting B34R(D)



|            |            |   |                |                     |          |         |          |      |             |    |
|------------|------------|---|----------------|---------------------|----------|---------|----------|------|-------------|----|
| HYBRISUSER |            |   |                |                     |          |         |          |      |             | 00 |
| ECM        | LOC        | SUMMARY OF MODIFICATIONS                        |                |                     | EXECUTED | CHECKED | RELEASED | DATE | VER         |    |
| EXECUTED   | HYBRISUSER | THREE PH. MOTOR EXPLOSION PROOF NEMA PREM. EFF. |                |                     |          |         |          |      |             |    |
| CHECKED    |            | FRAME 213/5TC IP55 TEFC                         |                |                     |          |         |          |      |             |    |
| RELEASED   |            |   |                |                     |          |         |          |      |             |    |
| REL. DATE  |            | WMO   | Jaragua do Sul | Product Engineering |          |         |          |      |             |    |
|            |            |   |                |                     | PREVIEW  |         | WDD 00   |      | SHEET 1 / 1 |    |



MADE IN BRAZIL

**W21X NEMA**  
**Premium**

14380393



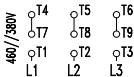
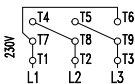
LISTED

CC029A

*Inverter Duty Motor*  
*Severe Duty*

MODEL 01036XT3E215TC

|   |            |                    |                   |
|---|------------|--------------------|-------------------|
| PH 3  | FR 213/5TC |                    |                   |
| HP(kW) 10.0(7.5)  |            | HZ 60              | IP55              |
| V 230/460   |            | A 23.4/11.7        |                   |
| RPM 3525  |            | NEMA NOM EFF 90.2% |                   |
| PF 0.89   |            | SFA 26.9/13.5      | DES B             |
| INS CL F $\Delta$ T 80 K                                  |            | SF 1.15            | ENCL TEFC         |
| DUTY CONT.  |            | CODE H             | ALT 1000 m.a.s.l. |
| AMB 40°C  |            |                    |                   |
| AMB 55°C SF1.0  |            |                    |                   |
| 10HP 7.5kW 50Hz 380V 14.1A 2895RPM SF1.00 EFF 88.5% (IE2) |            |                    |                   |



→ 6308-2RS MOBIL POLYREX EM  
→ 6207-2RS

207 Lbs



TEMP CODE T3C  
CSA/UL: Class I - Div. 1 - Groups C and D  
CSA: Class II - Div. 1 - Groups F and G  
CSA: Class I - Zone 1 - IIB  
EXPLOSION PROOF MOTOR

FOR USE ON VPWM VFD 1000:1VT, 20:1CT, 1.0SF, T3C, AMB 40°C.