

# DATA SHEET



## Three Phase Induction Motor - Squirrel Cage

Customer :					
Product line : W21 Explosion Proof NEMA Premium Efficiency Three-Phase		Product code : 14406880			
		Catalog # : 01518XT3E254TC			
Frame : 254TC	Insulation class : F	Cooling method : IC411 - TEFC	Mounting : F-1		
Duty cycle : Cont.(S1)	Ambient temperature : -20°C to +40°C	Rotation <sup>1</sup> : Both (CW and CCW)	Starting method : Direct On Line		
Altitude : 1000 m.a.s.l.	Protection degree : IP55	Approx. weight <sup>3</sup> : 333 lb	Moment of inertia (J) : 2.31 sq.ft.lb		
Design : B					
Output [HP]	15		15		
Poles	4		4		
Frequency [Hz]	60		50		
Rated voltage [V]	230/460		380		
Rated current [A]	36.8/18.4		22.1		
L. R. Amperes [A]	269/134		128		
LRC [A]	7.3x(Code J)		5.8x(Code G)		
No load current [A]	17.2/8.60		8.40		
Rated speed [RPM]	1770		1455		
Slip [%]	1.67		3.00		
Rated torque [ft.lb]	44.5		54.1		
Locked rotor torque [%]	300		220		
Breakdown torque [%]	300		229		
Service factor	1.15		1.00		
Temperature rise	80 K		80 K		
Locked rotor time	46s (cold) 26s (hot)		45s (cold) 25s (hot)		
Noise level <sup>2</sup>	69.0 dB(A)		67.0 dB(A)		
Efficiency (%)	25%	89.4	92.1		
	50%	90.2	91.0		
	75%	91.7	91.7		
	100%	92.4	90.2		
Power Factor	25%	0.39	0.45		
	50%	0.65	0.71		
	75%	0.75	0.79		
	100%	0.81	0.84		
Bearing type : 6309 C3	Drive end	Non drive end	Foundation loads		
Sealing : Oil Seal		Lip Seal	Max. traction : 530 lb		
Lubrication interval : 20000 h		20000 h	Max. compression : 862 lb		
Lubricant amount : 13 g		9 g			
Lubricant type : Mobil Polyrex EM					
Notes USABLE @208V 40.7A SF 1.15 SFA 46.8A					
This revision replaces and cancel the previous one, which must be eliminated. (1) Looking the motor from the shaft end. (2) Measured at 1m and with tolerance of +3dB(A). (3) Approximate weight subject to changes after manufacturing process. (4) At 100% of full load.			These are average values based on tests with sinusoidal power supply, subject to the tolerances stipulated in NEMA MG-1.		
Rev.	Changes Summary		Performed	Checked	Date
Performed by					
Checked by				Page	Revision
Date	12/10/2023			1 / 2	

# DATA SHEET



## Three Phase Induction Motor - Squirrel Cage

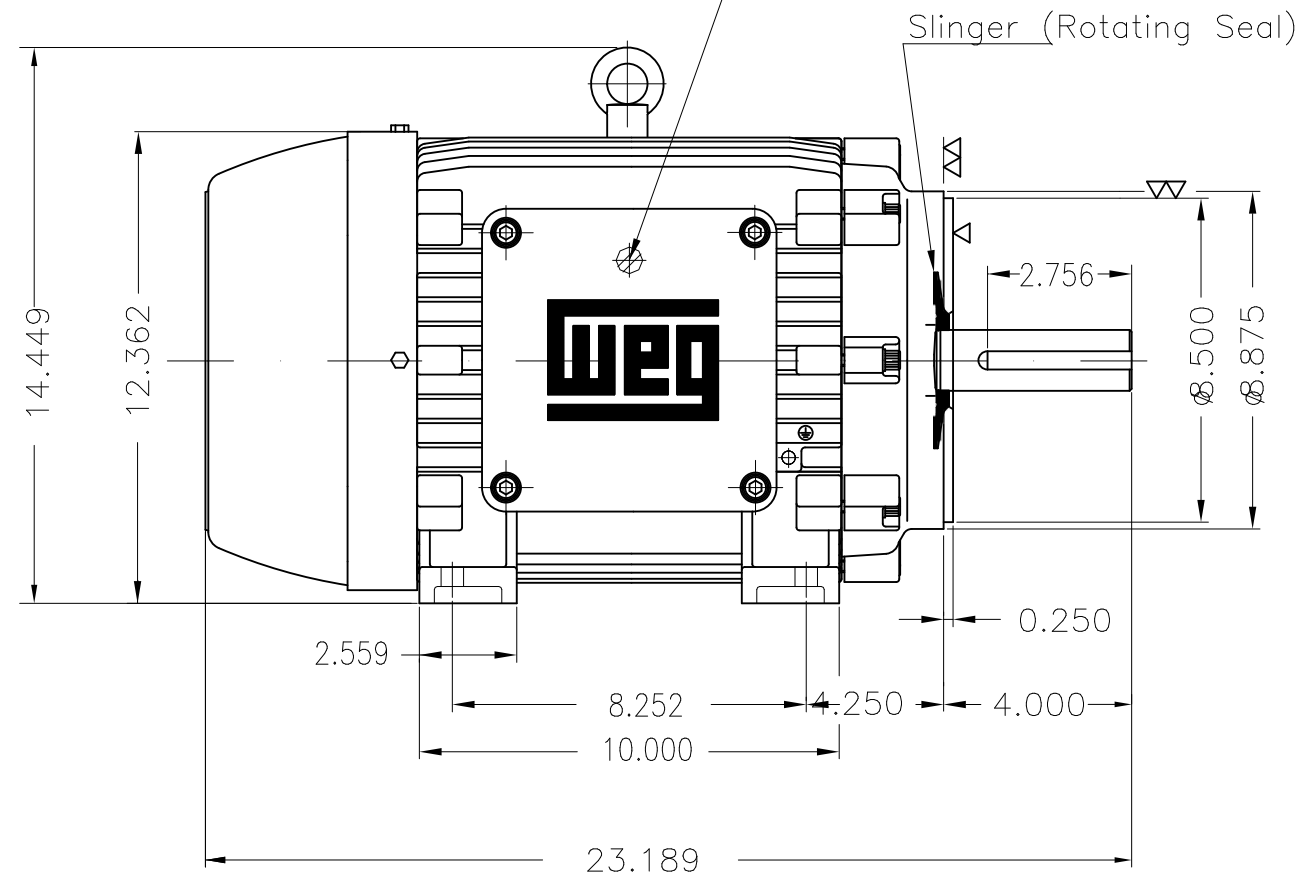
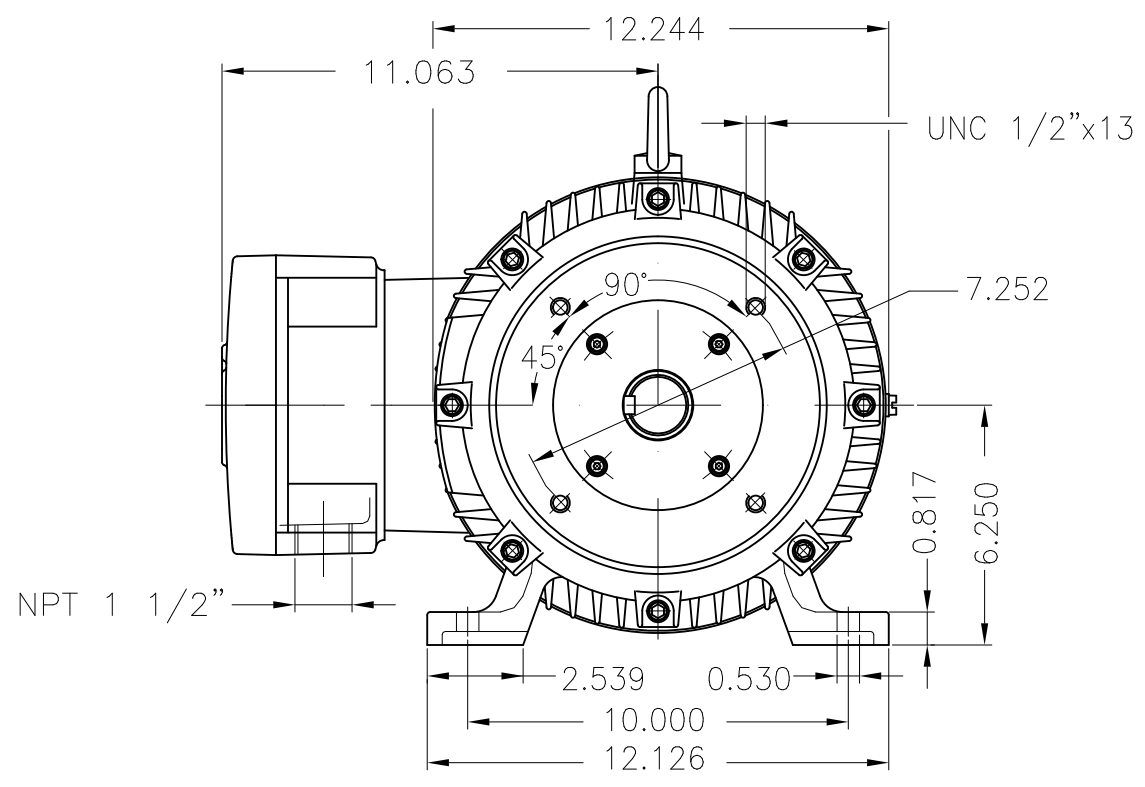
Customer : \_\_\_\_\_

### Thermal protection

ID	Application	Type	Quantity	Sensing Temperature
1	Winding	Thermostat - 2 wires	1 x Phase	155 °C

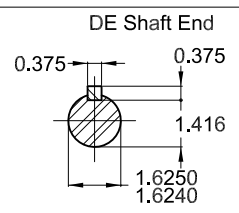
Rev.	Changes Summary	Performed	Checked	Date
Performed by		Page 2 / 2		Revision
Checked by				
Date	12/10/2023			

Grounding for leads 5.2–25 mm<sup>2</sup> / 10–4 AWG



15 HP 04 Poles 60 Hz A

- With grease fitting
- Color RAL 5009
- Painting plan 202P
- Mounting NEMA F-1
- Mounting B34R(D)



ECM		LOC	SUMMARY OF MODIFICATIONS		HYBRISUSER					00
EXECUTED					EXECUTED	CHECKED	RELEASED	DATE	VER	
CHECKED	HYBRISUSER			THREE PH. MOTOR EXPLOSION PROOF NEMA PREM. EFF. FRAME 254TC IP55 TEFC						<b>PREVIEW</b>
RELEASED										<b>WDD 00</b>
REL. DATE		WMO	Jaragua do Sul	Product Engineering	SHEET	1 / 1				

MADE IN BRAZIL

**W21X NEMA**  
**Premium**

14406880



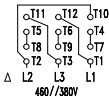
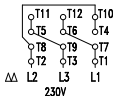
LISTED

CC029A

*Inverter Duty Motor*  
*Severe Duty*

MODEL 01518XT3E254TC

PH 3	FR 254TC		
HP(kW) 15.0(11.0)		HZ 60	IP55
V 230/460		A 36.8/18.4	
RPM 1770		NEMA NOM EFF 92.4%	
PF 0.81		SFA 42.3/21.2	DES B
INS CL F $\Delta$ T 80 K		SF 1.15	ENCL TEFC
DUTY CONT.		CODE J	ALT 1000 m.a.s.l.
AMB 40°C			
AMB 55°C SF1.0			
15HP 11kW 50Hz 380V 22.1A 1455RPM SF1.00 EFF 90.2% (IE2)			



→ 6309-C3 MOBIL POLYREX EM  
→ 6209-C3 13 g 20000 h

333 Lbs



TEMP CODE T3C  
CSA/UL: Class I - Div. 1 - Groups C and D  
CSA: Class II - Div. 1 - Groups F and G  
CSA: Class I - Zone 1 - IIB

EXPLOSION PROOF MOTOR

FOR USE ON VPWM VFD 1000:1VT, 6:1CT, 1.0SF, T3C, AMB 40°C.