

DATA SHEET



Three Phase Induction Motor - Squirrel Cage

Customer :					
Product line : W21 Explosion Proof NEMA Premium Efficiency Three-Phase		Product code : 14407151			
		Catalog # : 01536XT3E254TC			
Frame : 254TC	Insulation class : F	Cooling method : IC411 - TEFC	Mounting : F-1		
Duty cycle : Cont.(S1)	Ambient temperature : -20°C to +40°C	Rotation ¹ : Both (CW and CCW)	Starting method : Direct On Line		
Altitude : 1000 m.a.s.l.	Protection degree : IP55	Approx. weight ³ : 324 lb	Moment of inertia (J) : 1.19 sq.ft.lb		
Design : B					
Output [HP]	15	15			
Poles	2	2			
Frequency [Hz]	60	50			
Rated voltage [V]	230/460	380			
Rated current [A]	34.8/17.4	21.0			
L. R. Amperes [A]	237/118	113			
LRC [A]	6.8x(Code G)	5.4x(Code E)			
No load current [A]	12.0/6.00	5.90			
Rated speed [RPM]	3540	2915			
Slip [%]	1.67	2.83			
Rated torque [ft.lb]	22.3	27.0			
Locked rotor torque [%]	200	150			
Breakdown torque [%]	270	210			
Service factor	1.15	1.00			
Temperature rise	80 K	80 K			
Locked rotor time	55s (cold) 31s (hot)	55s (cold) 31s (hot)			
Noise level ²	75.0 dB(A)	70.0 dB(A)			
Efficiency (%)	25%	89.4	91.5		
	50%	90.0	91.0		
	75%	90.5	90.2		
	100%	91.0	89.5		
Power Factor	25%	0.49	0.55		
	50%	0.74	0.80		
	75%	0.83	0.86		
	100%	0.87	0.89		
Bearing type : 6309 C3	Drive end	Non drive end	Foundation loads		
Sealing : Oil Seal		Lip Seal	Max. traction : 160 lb		
Lubrication interval : 15797 h		18447 h	Max. compression : 484 lb		
Lubricant amount : 13 g		9 g			
Lubricant type : Mobil Polyrex EM					
Notes USABLE @208V 37.3A SF 1.15 SFA 42.9A					
This revision replaces and cancel the previous one, which must be eliminated. (1) Looking the motor from the shaft end. (2) Measured at 1m and with tolerance of +3dB(A). (3) Approximate weight subject to changes after manufacturing process. (4) At 100% of full load.			These are average values based on tests with sinusoidal power supply, subject to the tolerances stipulated in NEMA MG-1.		
Rev.	Changes Summary		Performed	Checked	Date
Performed by					
Checked by				Page	Revision
Date	12/10/2023			1 / 2	

DATA SHEET



Three Phase Induction Motor - Squirrel Cage

Customer : _____

Thermal protection

ID	Application	Type	Quantity	Sensing Temperature
1	Winding	Thermostat - 2 wires	1 x Phase	155 °C

Rev.	Changes Summary	Performed	Checked	Date
Performed by		Page 2 / 2		Revision
Checked by				
Date	12/10/2023			

Grounding for leads 5.2–25 mm² / 10–4 AWG

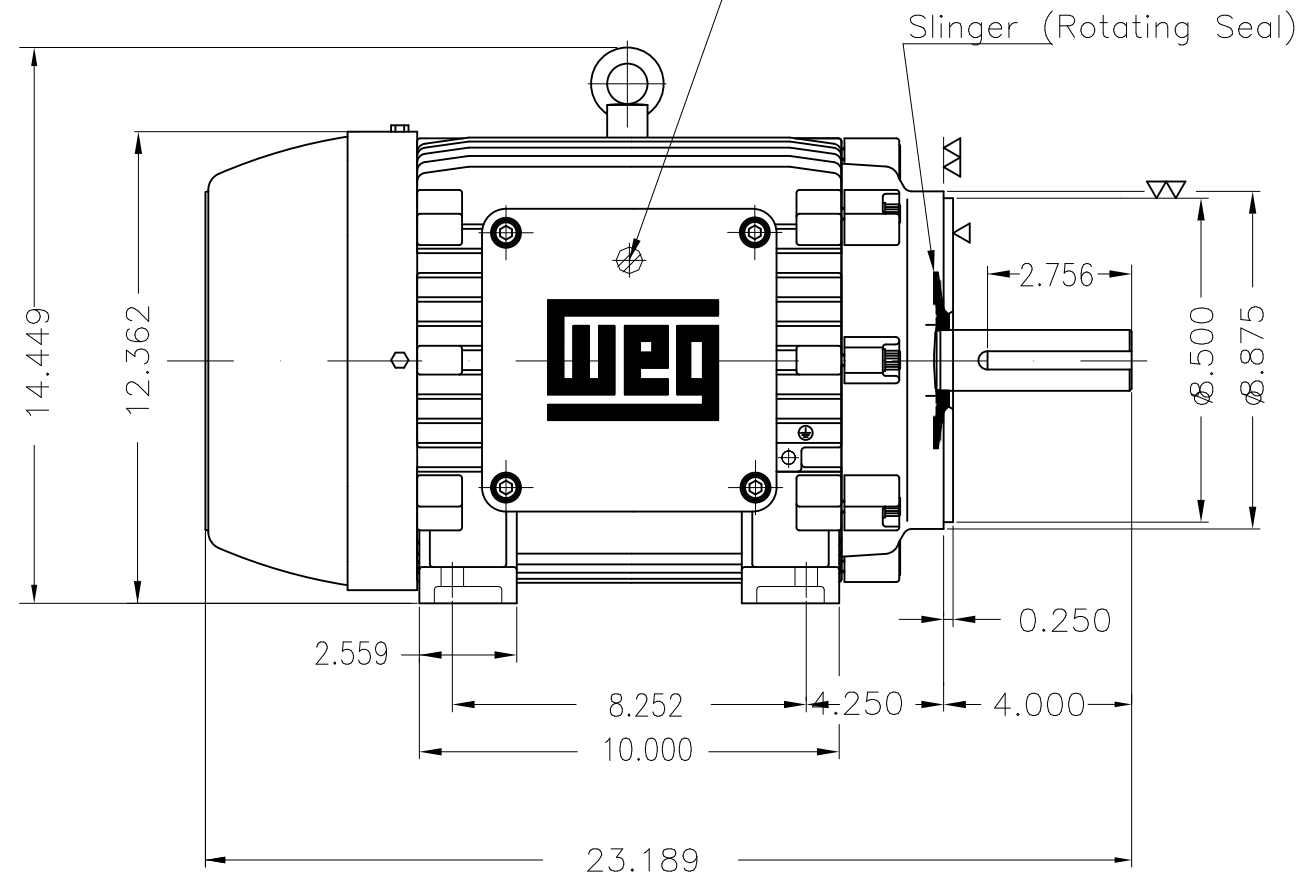
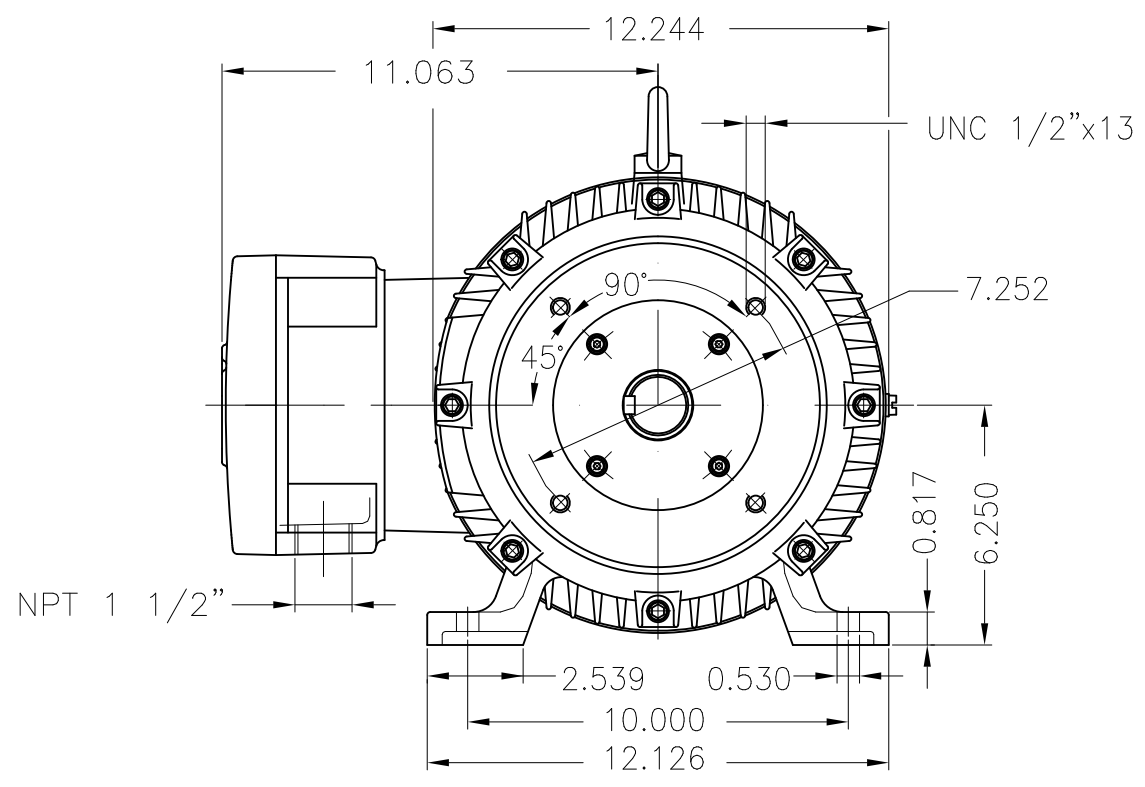
A

B

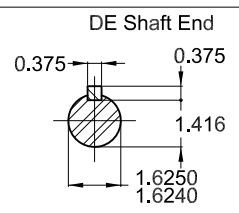
C

D

E



- With grease fitting
- Color RAL 5009
- Painting plan 222P
- Mounting NEMA F-1
- Mounting B34R(D)



15 HP 02 Poles 60 Hz A

						HYBRISUSER								00	
ECM	LOC	SUMMARY OF MODIFICATIONS				EXECUTED	CHECKED	RELEASED	DATE	VER					
EXECUTED	HYBRISUSER	THREE PH. MOTOR EXPLOSION PROOF NEMA PREM. EFF.		FRAME 254TC IP55 TEFC		PREVIEW		WDD		00					
CHECKED															
RELEASED															
REL. DATE		WMO Jaragua do Sul		Product Engineering		SHEET		1 / 1							

MADE IN BRAZIL

**W21X NEMA**
Premium

14407151



LISTED

CC029A

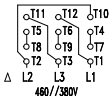
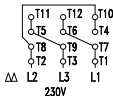
Inverter Duty Motor
Severe Duty

MODEL 01536XT3E254TC

PH 3	FR 254TC		
HP(kW) 15.0(11.0)		HZ 60	IP55
V 230/460		A 34.8/17.4	
RPM 3540		NEMA NOM EFF 91.0%	
PF 0.87		SFA 40.0/20.0	DES B
INS CL F Δ T 80 K		SF 1.15	ENCL TEFC
DUTY CONT.		CODE G	ALT 1000 m.a.s.l.
AMB 40°C			

AMB 55°C SF1.0 -bearings lub interval reduced by a factor of 50%

15HP 11kW 50Hz 380V 21.0A 2915RPM SF1.00 EFF 89.5% (IE2)



→ 6309-C3 MOBIL POLYREX EM

→ 6209-C3 13 g 15797 h

324 Lbs

TEMP CODE T3C
CSA/UL: Class I - Div. 1 - Groups C and D
CSA: Class II - Div. 1 - Groups F and G
CSA: Class I - Zone 1 - IIB

EXPLOSION PROOF MOTOR

FOR USE ON VPWM VFD 1000:1VT, 6:1CT, 1.0SF, T3C, AMB 40°C.