

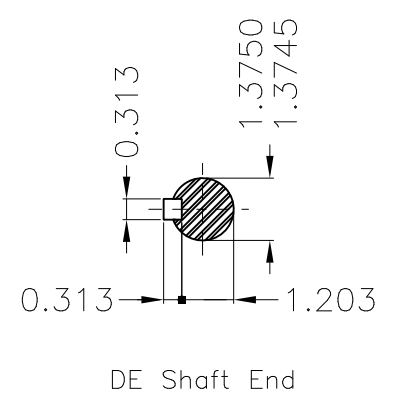
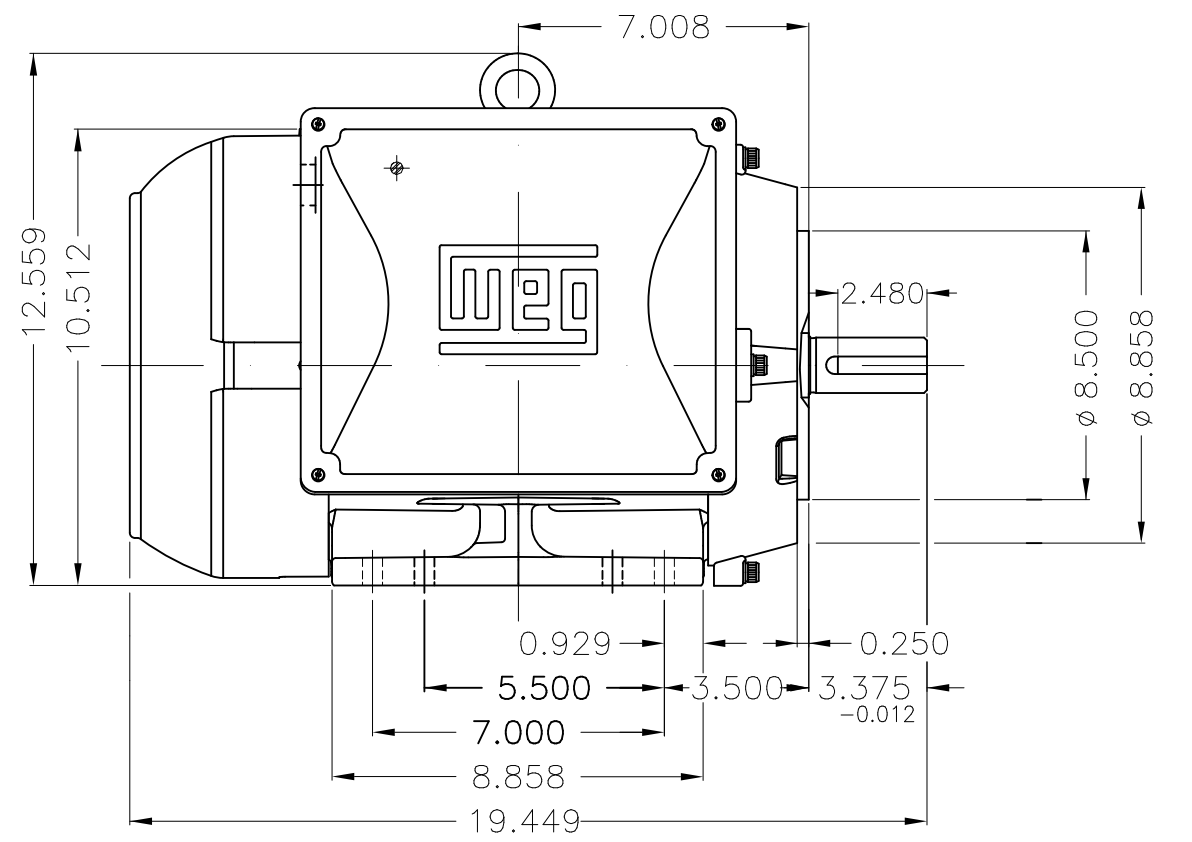
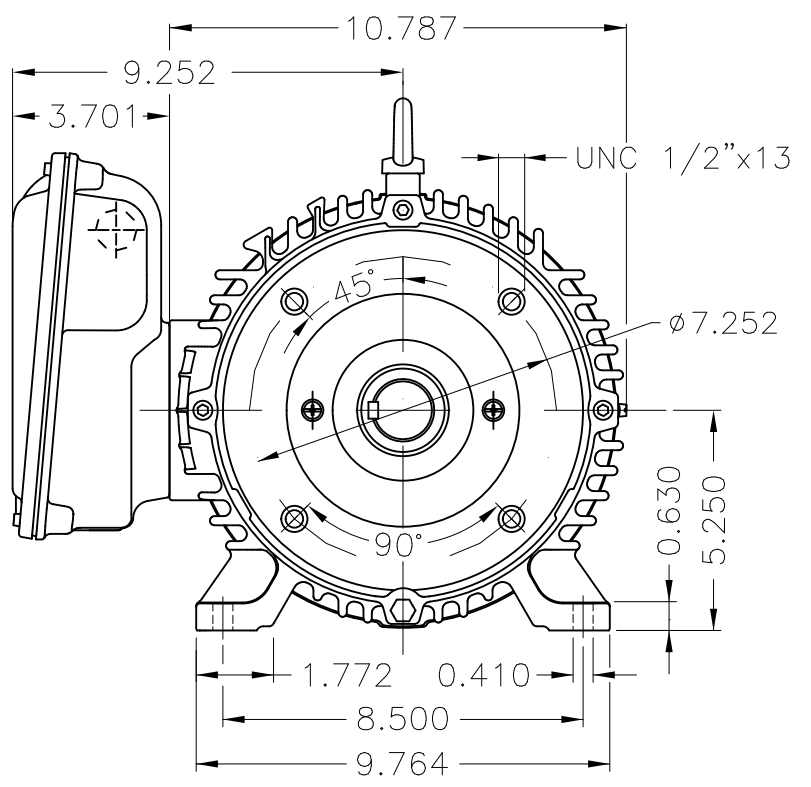
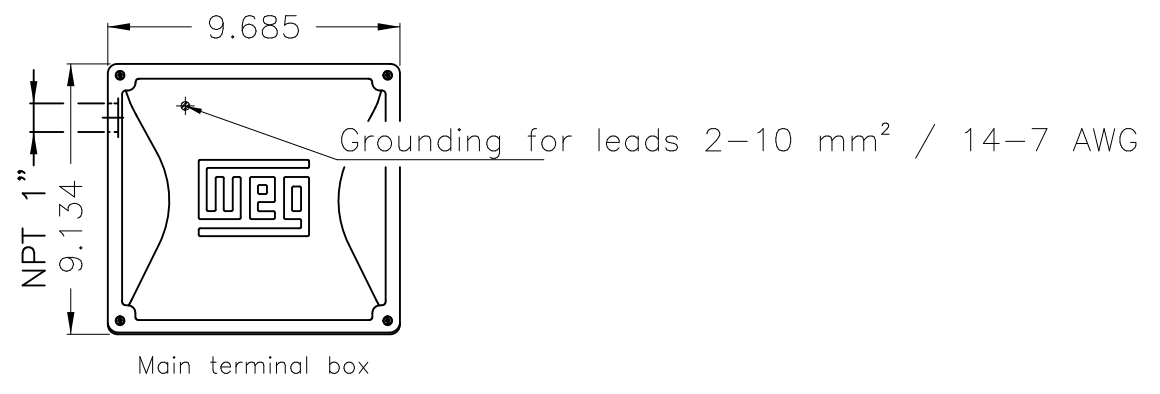
DATA SHEET



Single Phase Induction Motor - Squirrel Cage

Customer :					
Product line : W22 Single-Phase		Product code : 14121679		Catalog # : 00736ES1E213TC-W22	
Frame : 213/5TC	Output : 7.5 HP (5.5 kW)	Poles : 2	Frequency : 60 Hz	Rated voltage : 208-230 V	
Rated current : 30.5-28.2 A	L. R. Amperes : 220-203 A	LRC : 7.2x(Code G)	No load current : 5.69-6.60 A	Rated speed : 3510 rpm	
Slip : 2.50 %	Rated torque : 11.2 ft.lb	Locked rotor torque : 280 %	Breakdown torque : 290 %	Insulation class : F	
Service factor : 1.15	Moment of inertia (J) : 0.5550 sq.ft.lb	Locked rotor time : 12s (cold) 7s (hot)	Temperature rise : 80 K	Duty cycle : Cont.(S1)	
		Ambient temperature : -20°C to +40°C	Altitude : 1000 m.a.s.l.	Protection degree : IP55	
		Cooling method : IC411 - TEFC	Mounting : F-1	Rotation ¹ : Both (CW and CCW)	
		Noise level ² : 72.0 dB(A)	Starting method : Direct On Line	Approx. weight ³ : 168 lb	
Output	25%	50%	75%	100%	
Efficiency (%)	76.8	78.5	84.0	85.5	
Power Factor	0.74	0.99	0.99	0.99	
Foundation loads		Max. traction : 99 lb			
		Max. compression : 267 lb			
Bearing type :	<u>Drive end</u>	<u>Non drive end</u>			
Sealing :	6308 ZZ	6206 ZZ			
Lubrication interval :	V'Ring	V'Ring			
Lubricant amount :	-	-			
Lubricant type :	Mobil Polyrex EM				
Notes					
This revision replaces and cancel the previous one, which must be eliminated. (1) Looking the motor from the shaft end. (2) Measured at 1m and with tolerance of +3dB(A). (3) Approximate weight subject to changes after manufacturing process. (4) At 100% of full load.			These are average values based on tests with sinusoidal power supply, subject to the tolerances stipulated in NEMA MG-1.		
Rev.	Changes Summary		Performed	Checked	Date
Performed by					
Checked by					
Date	11/10/2023			Page	Revision
				1 / 1	

A
B
C
D
E



Bearing cap								
Mounting NEMA F-1								
Mounting B34R(D)								
HYBRISUSER								
00								
ECM	LOC	SUMMARY OF MODIFICATIONS		EXECUTED	CHECKED	RELEASED	DATE	VER
EXECUTED	HYBRISUSER	SINGLE PH. MOTOR W22		PREVIEW		WDD 00		
CHECKED		FRAME 213/5TC IP55 TEFC		WEG				
RELEASED								
REL. DATE	WMO	Jaragua do Sul	Product Engineering	SHEET		1 / 1		

7.5 HP 02 Poles 60 Hz



Mod. ME1BFOXOX

MADE IN BRAZIL
14121679

MODEL 00736ES1E213TC-W22

Electric Motor
Severe Duty

PH1 60Hz Fr. 213/5TC 1000m.a.s.l. IP55 TEFC 168lb

V 230/460

A 28.2/14.1

HP 7.5

kW 5.5

SF 1.15

SFA

RPM 3510

PF 0.99

AMB 40°C

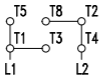
INS cl. F DT80K

NEMA NOM EFF 85.5%

DUTY CONT.

DES - Code G

TO REVERSE ROTATION INVERT T5 AND T8



LOW VOLTAGE



HIGH VOLTAGE



MOBIL POLYREX EM