

DATA SHEET

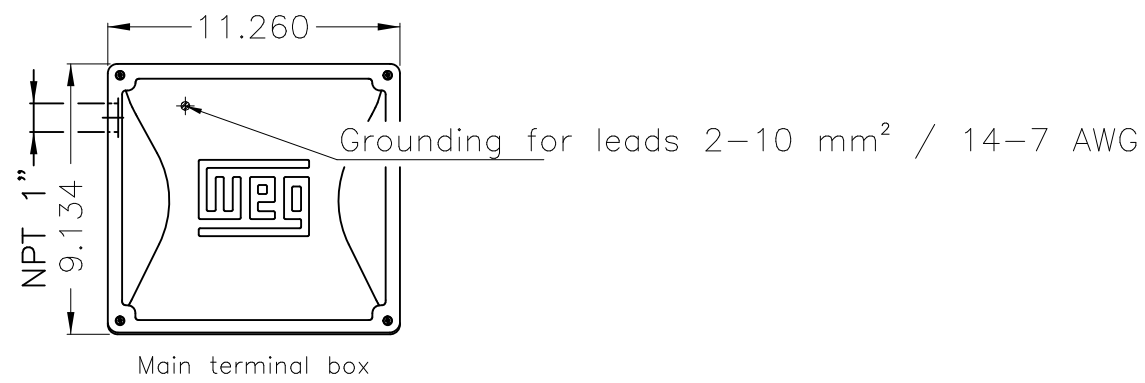


Single Phase Induction Motor - Squirrel Cage

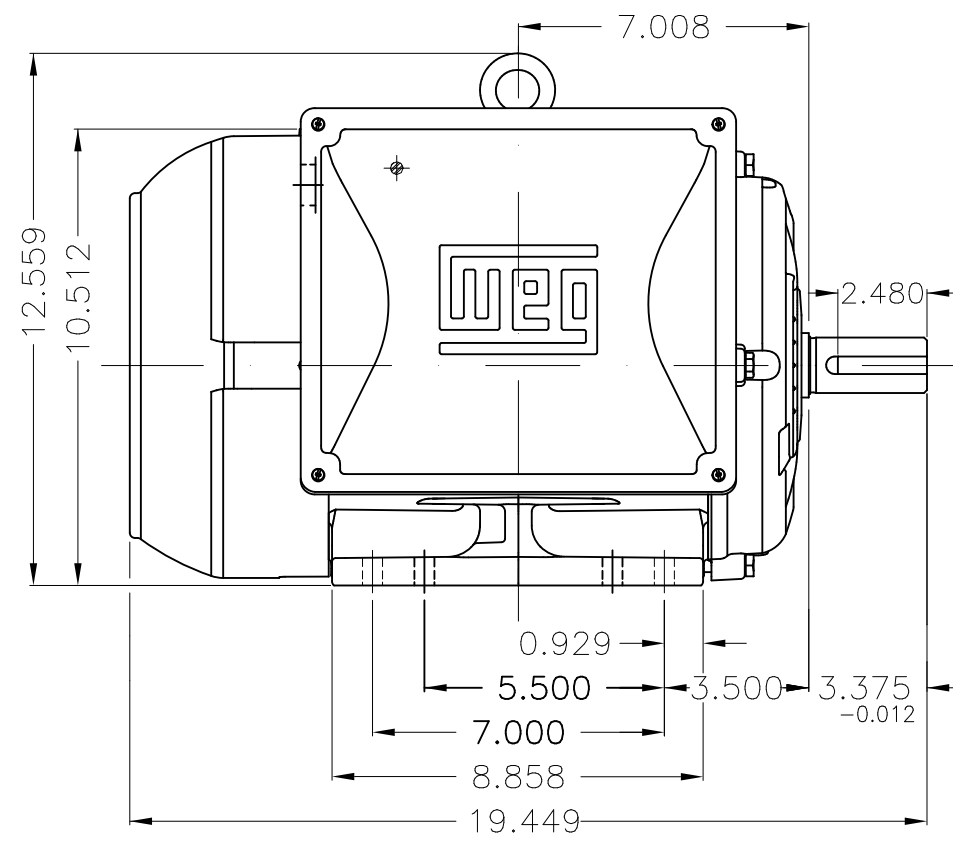
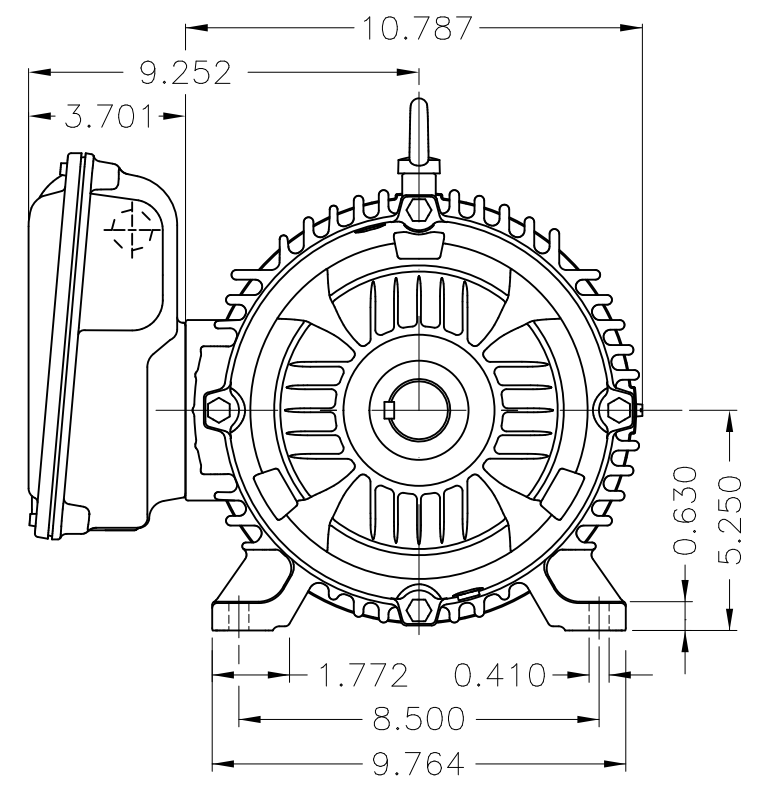
Customer :					
Product line : W22 Single-Phase		Product code : 14154360			
		Catalog # : 01018ES1E215T-W22			
Frame	: 213/5T	Locked rotor time	: 10s (cold) 6s (hot)		
Output	: 10 HP (7.5 kW)	Temperature rise	: 80 K		
Poles	: 4	Duty cycle	: Cont.(S1)		
Frequency	: 60 Hz	Ambient temperature	: -20°C to +40°C		
Rated voltage	: 208-230 V	Altitude	: 1000 m.a.s.l.		
Rated current	: 44.5-40.8 A	Protection degree	: IP55		
L. R. Amperes	: 298-273 A	Cooling method	: IC411 - TEFC		
LRC	: 6.7x(Code G)	Mounting	: F-1		
No load current	: 9.66-11.2 A	Rotation ¹	: Both (CW and CCW)		
Rated speed	: 1740 rpm	Noise level ²	: 63.0 dB(A)		
Slip	: 3.33 %	Starting method	: Direct On Line		
Rated torque	: 30.2 ft.lb	Approx. weight ³	: 191 lb		
Locked rotor torque	: 260 %				
Breakdown torque	: 240 %				
Insulation class	: F				
Service factor	: 1.15				
Moment of inertia (J)	: 1.15 sq.ft.lb				
Output	25%	50%	75%	100%	
Efficiency (%)	76.2	77.9	82.5	84.0	
Power Factor	0.66	0.92	0.94	0.95	
Foundation loads					
Max. traction : 313 lb					
Max. compression : 504 lb					
		<u>Drive end</u>	<u>Non drive end</u>		
Bearing type	:	6308 ZZ	6206 ZZ		
Sealing	:	V'Ring	V'Ring		
Lubrication interval	:	-	-		
Lubricant amount	:	-	-		
Lubricant type	:	Mobil Polyrex EM			
Notes					
This revision replaces and cancel the previous one, which must be eliminated.					
(1) Looking the motor from the shaft end.					
(2) Measured at 1m and with tolerance of +3dB(A).					
(3) Approximate weight subject to changes after manufacturing process.					
(4) At 100% of full load.					
These are average values based on tests with sinusoidal power supply, subject to the tolerances stipulated in NEMA MG-1.					
Rev.	Changes Summary		Performed	Checked	Date
Performed by					
Checked by					
Date	11/10/2023			Page	Revision
				1 / 1	

1 2 3 4 5 6

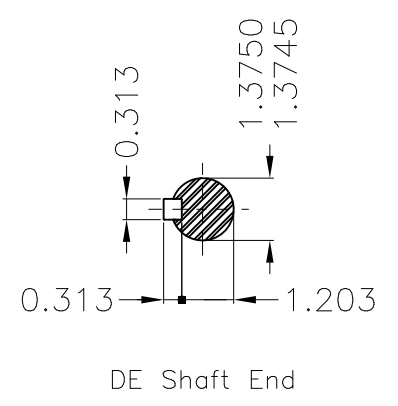
A



B



C



D

E

Mounting NEMA F-1					
Mounting B3R(D)					
				HYBRISUSER	00
ECM	LOC	SUMMARY OF MODIFICATIONS		EXECUTED	CHECKED
EXECUTED	HYBRISUSER	SINGLE PH. MOTOR W22			
CHECKED		FRAME 213/5T IP55 TEFC			
RELEASED					
REL. DATE		WMO	Jaragua do Sul	Product Engineering	
				PREVIEW	
				WDD	00
				SHEET 1 / 1	

10 HP 04 Poles 60 Hz

A





Mod. ME1BFOXOX

MADE IN BRAZIL
14154360

MODEL 01018ES1E215T-W22

Electric Motor
Severe Duty

PH1 60Hz Fr. 213/5T 1000m.a.s.l. IP55 TEFC 191lb

V 230/460

A 40.8/20.4

HP 10

kW 7.5

SF 1.15

SFA 45.0/22.5

RPM 1740

PF 0.95

AMB 40°C

INS cl. F DT80K

NEMA NOM EFF 84.0%

DUTY CONT.

DES - Code G

TO REVERSE ROTATION INVERT T5 AND T8



LOW VOLTAGE



HIGH VOLTAGE



MOBIL POLYREX EM