

# DATA SHEET

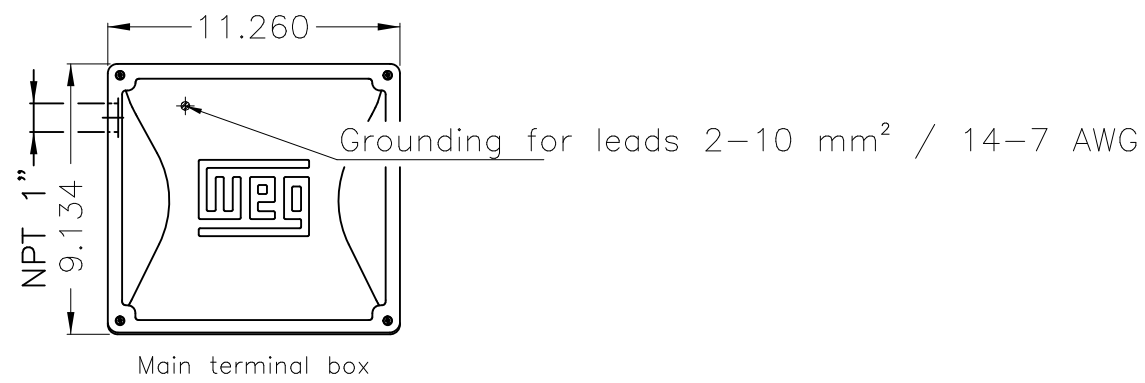


## Single Phase Induction Motor - Squirrel Cage

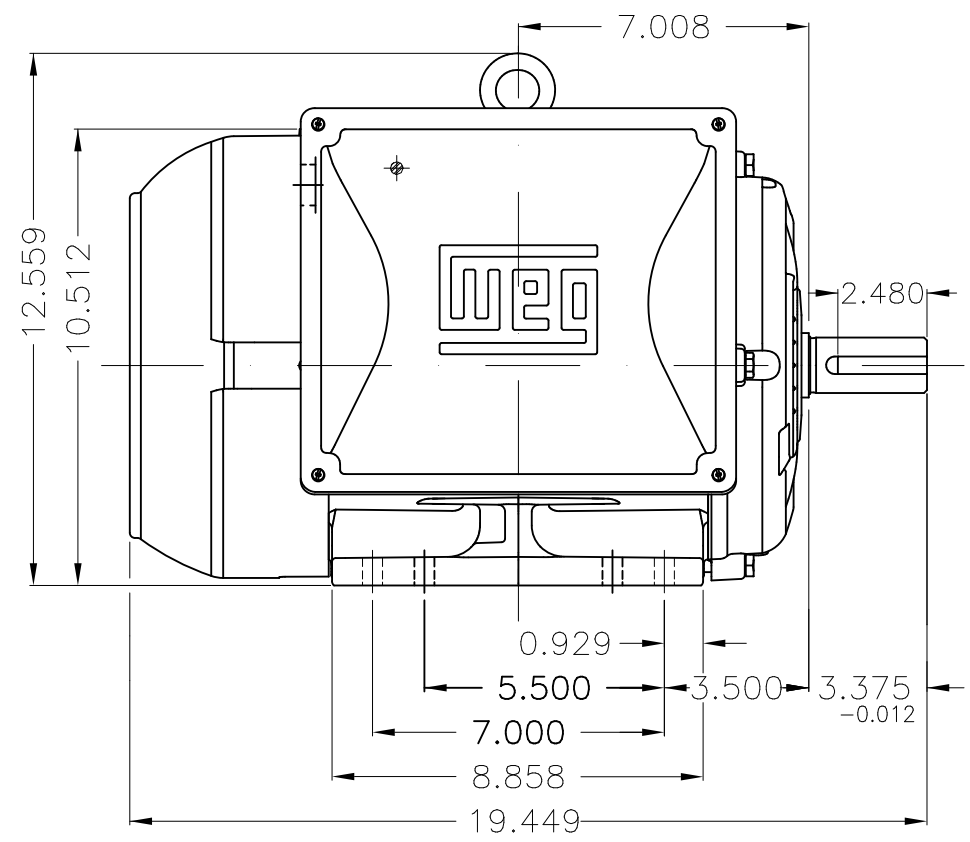
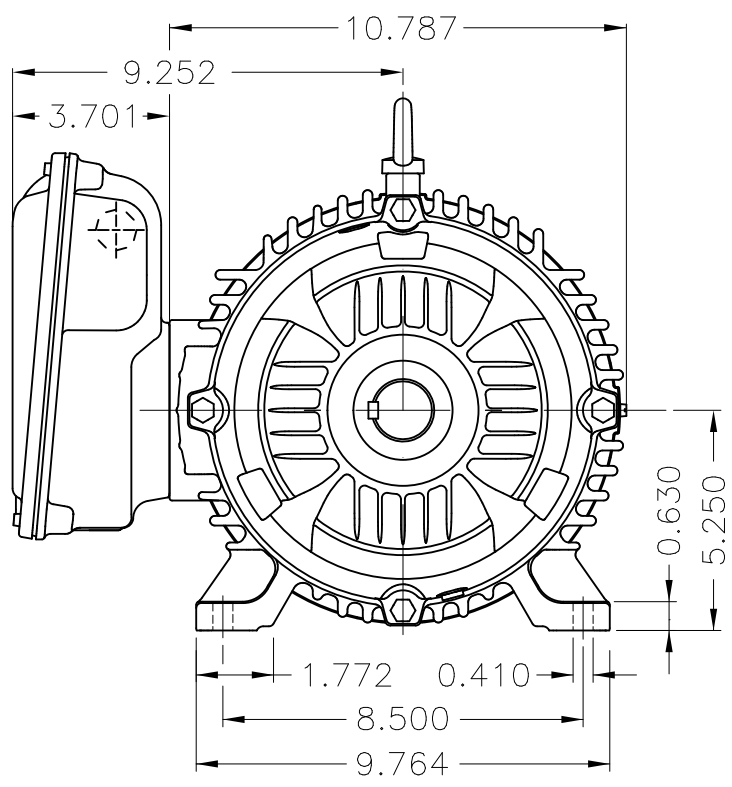
Customer :					
Product line : W22 Single-Phase		Product code : 14086164		Catalog # : 01218ES1E215T-W22	
Frame : 213/5T	Output : 12.5 HP (9.2 kW)	Poles : 4	Frequency : 60 Hz	Rated voltage : 208-230 V	
Rated current : 54.0-52.2 A	L. R. Amperes : 405-392 A	LRC : 7.5x(Code J)	No load current : 15.6-18.1 A	Rated speed : 1740 rpm	
Slip : 3.33 %	Rated torque : 37.7 ft.lb	Locked rotor torque : 220 %	Breakdown torque : 240 %	Insulation class : H	
Service factor : 1.15	Moment of inertia (J) : 1.29 sq.ft.lb	Locked rotor time : 10s (cold) 6s (hot)	Temperature rise : 125 K	Duty cycle : Cont.(S1)	
		Ambient temperature : -20°C to +40°C	Altitude : 1000 m.a.s.l.	Protection degree : IP55	
		Cooling method : IC411 - TEFC	Mounting : F-1	Rotation <sup>1</sup> : Both (CW and CCW)	
		Noise level <sup>2</sup> : 63.0 dB(A)	Starting method : Direct On Line	Approx. weight <sup>3</sup> : 207 lb	
Output	25%	50%	75%	100%	
Efficiency (%)	75.7	77.0	81.5	82.5	
Power Factor	0.57	0.85	0.91	0.93	
Foundation loads					
Max. traction : 407 lb					
Max. compression : 614 lb					
Bearing type :	<u>Drive end</u> 6308 ZZ		<u>Non drive end</u> 6206 ZZ		
Sealing :	V'Ring		V'Ring		
Lubrication interval :	-		-		
Lubricant amount :	-		-		
Lubricant type :	Mobil Polyrex EM				
Notes					
This revision replaces and cancel the previous one, which must be eliminated. (1) Looking the motor from the shaft end. (2) Measured at 1m and with tolerance of +3dB(A). (3) Approximate weight subject to changes after manufacturing process. (4) At 100% of full load.			These are average values based on tests with sinusoidal power supply, subject to the tolerances stipulated in NEMA MG-1.		
Rev.	Changes Summary		Performed	Checked	Date
Performed by					
Checked by					
Date	11/10/2023			Page 1 / 1	Revision

1 2 3 4 5 6

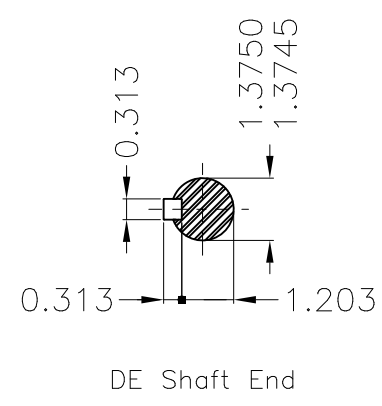
A



B



C



D

E

Mounting NEMA F-1					
Mounting B3R(D)					
				HYBRISUSER	00
ECM	LOC	SUMMARY OF MODIFICATIONS		EXECUTED	CHECKED
EXECUTED	HYBRISUSER	SINGLE PH. MOTOR W22			
CHECKED		FRAME 213/5T IP55 TEFC			
RELEASED					
REL. DATE		WMO	Jaragua do Sul	Product Engineering	
				PREVIEW	
				WDD	00
				SHEET 1 / 1	

12.5 HP 04 Poles 60 Hz

A



**WEG**  
**W22**



Mod. ME1 BFOXOX

MADE IN BRAZIL  
14086164

MODEL 01218ES1E215T-W22

Electric Motor  
Severe Duty

PH1 60Hz Fr. 213/5T 1000m.a.s.l. IP55 TEFC 207lb

V 230/460

A 52.2/26.1

HP 12.5

kW 9.2

SF 1.15

SFA

RPM 1740

PF 0.93

AMB 40°C

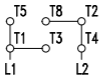
INS cl. H

NEMA NOM EFF 82.5%

DUTY CONT.

DES - Code J

TO REVERSE ROTATION INVERT T5 AND T8



LOW VOLTAGE



HIGH VOLTAGE



MOBIL POLYREX EM

