

# DATA SHEET

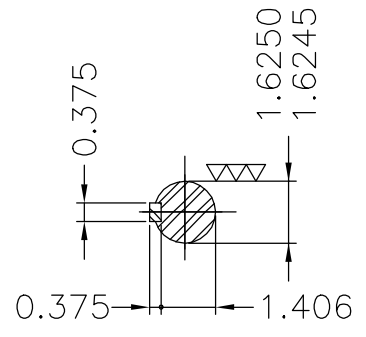
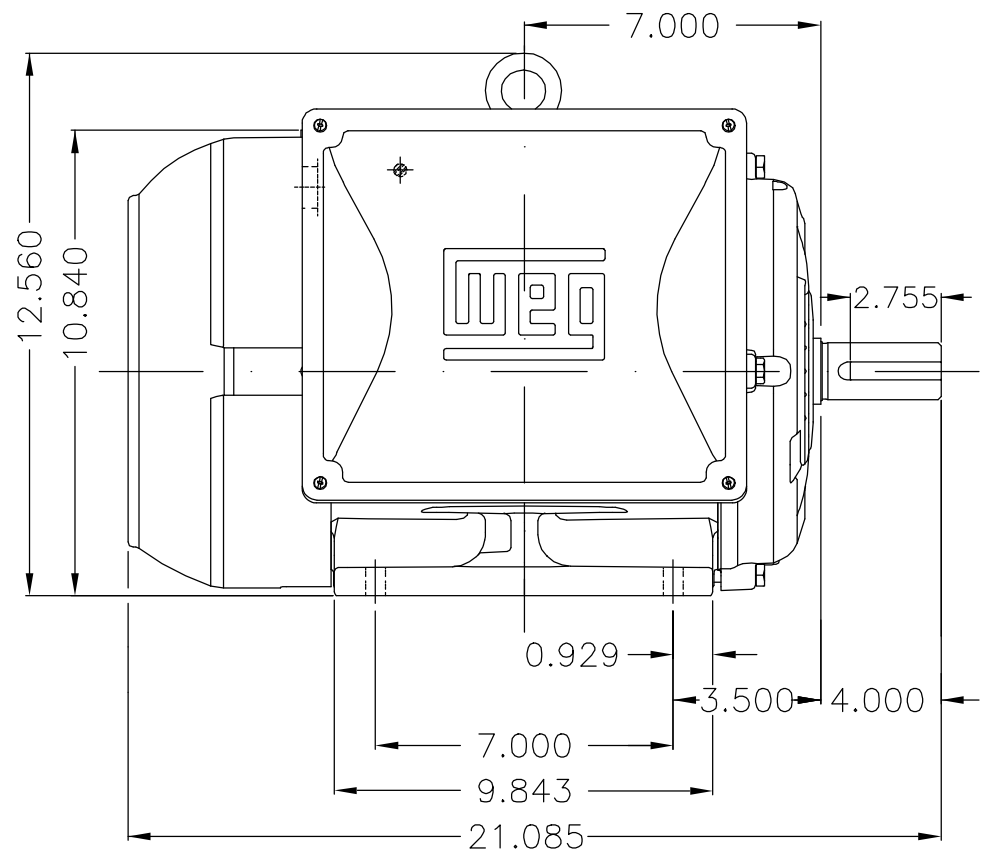
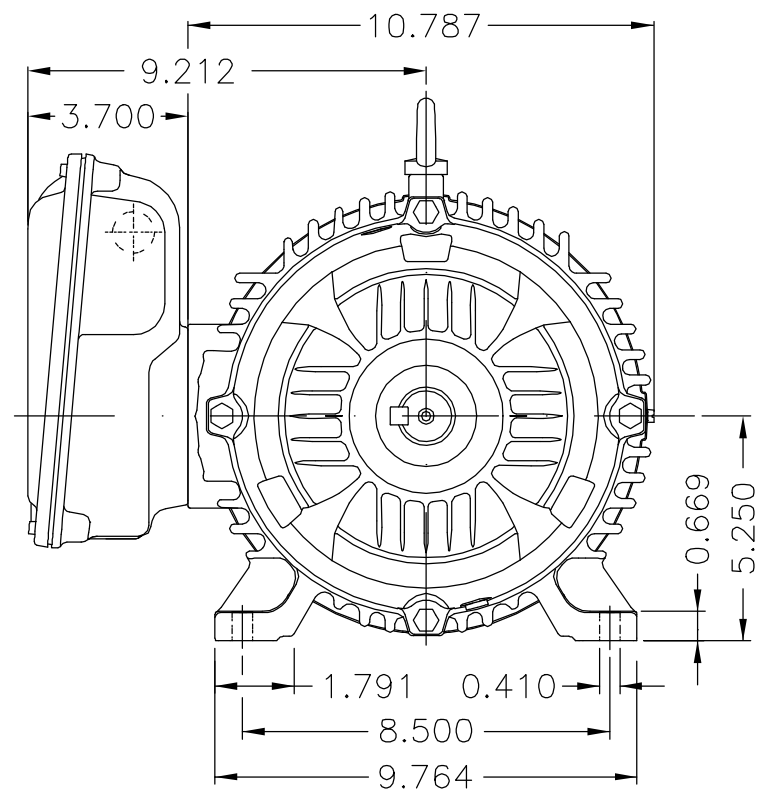
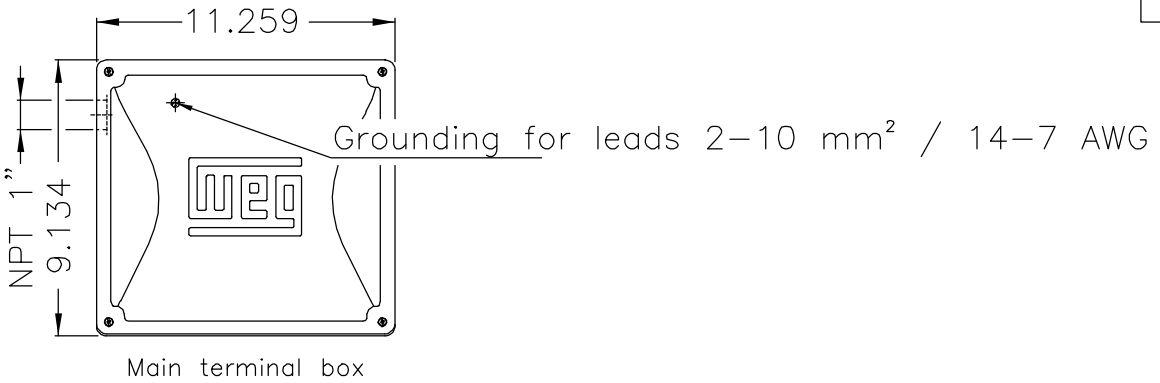


## Single Phase Induction Motor - Squirrel Cage

Customer :					
Product line : W22 Single-Phase		Product code : 14380933 Catalog # : 01418ES1D215TZ-W22			
Frame : 215TZ	Output : 14 HP (10.3 kW)	Poles : 4	Frequency : 60 Hz	Rated voltage : 230 V	
Rated current : 60.7 A	L. R. Amperes : 443 A	LRC : 7.3x(Code J)	No load current : 28.0 A	Rated speed : 1730 rpm	
Slip : 3.89 %	Rated torque : 42.5 ft.lb	Locked rotor torque : 240 %	Breakdown torque : 250 %	Insulation class : H	
Service factor : 1.07	Moment of inertia (J) : 1.29 sq.ft.lb	Locked rotor time : 10s (cold) 6s (hot)	Temperature rise : 125 K	Duty cycle : Cont.(S1)	
		Ambient temperature : -20°C to +40°C	Altitude : 1000 m.a.s.l.	Protection degree : IP55	
		Cooling method : IC411 - TEFC	Mounting : F-1	Rotation <sup>1</sup> : Both (CW and CCW)	
		Starting method : Direct On Line	Approx. weight <sup>3</sup> : 220 lb		
Output	25%	50%	75%	100%	
Efficiency (%)	0.000	75.0	79.0	82.0	
Power Factor	0.00	0.78	0.86	0.90	
Foundation loads					
Max. traction : 489 lb					
Max. compression : 710 lb					
		<u>Drive end</u>	<u>Non drive end</u>		
Bearing type :		6309 ZZ	6206 ZZ		
Sealing :		V'Ring	V'Ring		
Lubrication interval :		0 h	0 h		
Lubricant amount :		0 g	0 g		
Lubricant type :		Mobil Polyrex EM			
Notes					
This revision replaces and cancel the previous one, which must be eliminated. (1) Looking the motor from the shaft end. (2) Measured at 1m and with tolerance of +3dB(A). (3) Approximate weight subject to changes after manufacturing process. (4) At 100% of full load.			These are average values based on tests with sinusoidal power supply, subject to the tolerances stipulated in NEMA MG-1.		
Rev.	Changes Summary		Performed	Checked	Date
Performed by					
Checked by				Page	Revision
Date	11/10/2023			1 / 1	

EIXO/SHAFT	
PADRÃO/STANDARD	Dimensões em polegadas
OPCIONAL/OPTIONAL	
ESPECIAL/SPECIAL	X Dimensions in inches

THIS IS AN UPDATED REVISION, THE PREVIOUS ONE MUST BE DISREGARDED.



Carcaça com comprimento especial / Frame with special length						
Forma construtiva B3D / Mounting B3R(D)						
<b>WEG ELECTRIC CORPORATION - WEC</b>						
500001492228		Atual. linha pot. coforme EB	DEISEM	AKLOSOWSKI	AKLOSOWSKI	20.08.2018 05
500001466868		ALT CONF CLAIM 415097373	JEAN2	AMACEDO	AMACEDO	19.06.2018 04
ECM	LOC	SUMMARY OF MODIFICATIONS	EXECUTED	CHECKED	RELEASED	DATE VER
EXECUTED	AKLOSOWSKI	SINGLE PHASE MOTOR W22 NEMA FRAME 215TZ IP55 TEFC	10004890223			
CHECKED	JTOGNERI		000	05		
RELEASED	JTOGNERI					
REL DT	19.04.2017	WMO Jaragua do Sul	Product Engineering	SHEET	01 / 01	

14 HP 04 Poles 60Hz 415012785

UNCONTROLLED COPY RELEASED ZME A3



Mod. ME1BFOXOX

MADE IN BRAZIL  
14380933

MODEL 01418ES1D215TZ-W22

Electric Motor  
Severe Duty

PH1 60Hz Fr. 215TZ 1000m.a.s.l. IP55 TEFC 224lb

V 230

A 60.7

HP 14

kW 10.3

SF 1.07

SFA 65.0

RPM 1730

PF 0.90

AMB 40°C

INS cl. H

NEMA NOM EFF 82.0%

DUTY CONT.

DES - Code J



TO REVERSE ROTATION INVERT T5 AND T8

