

DATA SHEET



Three Phase Induction Motor - Squirrel Cage

Customer :					
Product line : W21 Explosion Proof NEMA Premium Efficiency Three-Phase		Product code : 14578495			
		Catalog # : 00718XT3E213TC			
Frame : 213/5TC	Insulation class : F	Duty cycle : Cont.(S1)	Ambient temperature : -20°C to +40°C	Altitude : 1000 m.a.s.l.	
Protection degree : IP55	Design : B	Cooling method : IC411 - TEFC	Mounting : F-1	Rotation ¹ : Both (CW and CCW)	
		Starting method : Direct On Line	Approx. weight ³ : 212 lb	Moment of inertia (J) : 1.38 sq.ft.lb	
Output [HP]	7.5			7.5	
Poles	4			4	
Frequency [Hz]	60			50	
Rated voltage [V]	230/460			380	
Rated current [A]	18.8/9.41			11.2	
L. R. Amperes [A]	126/63.0			61.6	
LRC [A]	6.7x(Code H)			5.5x(Code F)	
No load current [A]	8.00/4.00			4.10	
Rated speed [RPM]	1765			1460	
Slip [%]	1.94			2.67	
Rated torque [ft.lb]	22.3			27.0	
Locked rotor torque [%]	240			170	
Breakdown torque [%]	280			200	
Service factor	1.15			1.00	
Temperature rise	80 K			80 K	
Locked rotor time	21s (cold) 12s (hot)		21s (cold) 12s (hot)		
Noise level ²	58.0 dB(A)		56.0 dB(A)		
Efficiency (%)	25%	89.4		88.2	
	50%	90.2		88.5	
	75%	91.0		89.5	
	100%	91.7		89.5	
Power Factor	25%	0.38		0.43	
	50%	0.60		0.66	
	75%	0.73		0.77	
	100%	0.80		0.83	
Bearing type : 6308 2RS	Drive end	Non drive end	Foundation loads		
Sealing : Oil Seal		Lip Seal	Max. traction : 303 lb		
Lubrication interval : -		-	Max. compression : 515 lb		
Lubricant amount : -		-			
Lubricant type : Mobil Polyrex EM					
Notes USABLE @208V 20.8A SF 1.15 SFA 23.9A					
This revision replaces and cancel the previous one, which must be eliminated. (1) Looking the motor from the shaft end. (2) Measured at 1m and with tolerance of +3dB(A). (3) Approximate weight subject to changes after manufacturing process. (4) At 100% of full load.			These are average values based on tests with sinusoidal power supply, subject to the tolerances stipulated in NEMA MG-1.		
Rev.	Changes Summary		Performed	Checked	Date
Performed by					
Checked by				Page	Revision
Date	12/10/2023			1 / 2	

DATA SHEET



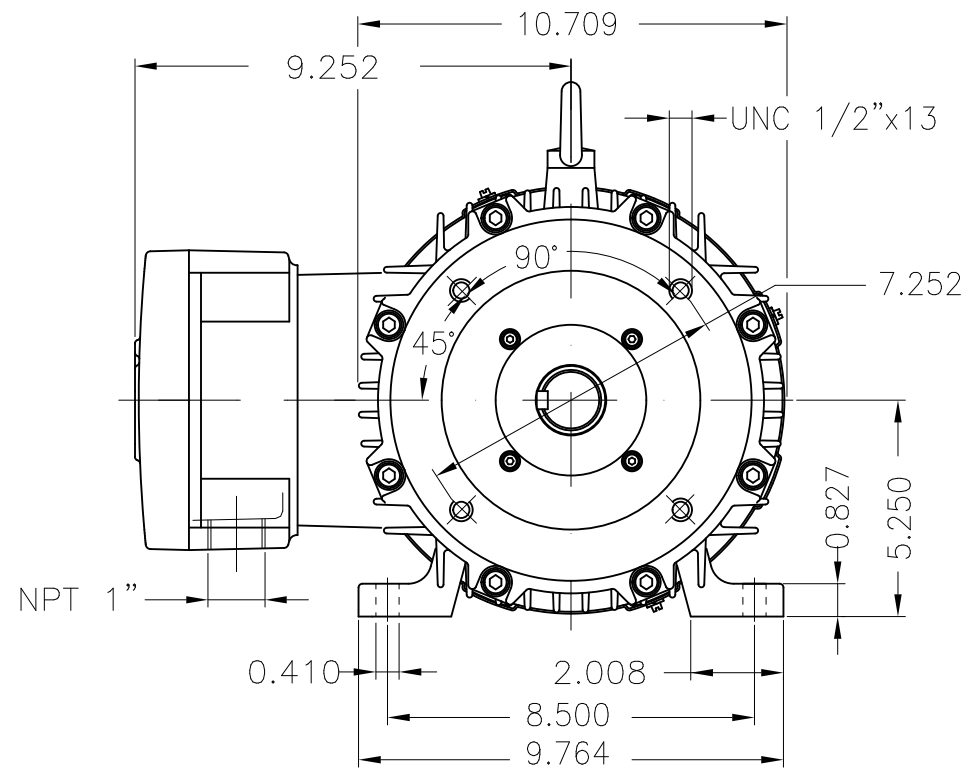
Three Phase Induction Motor - Squirrel Cage

Customer : _____

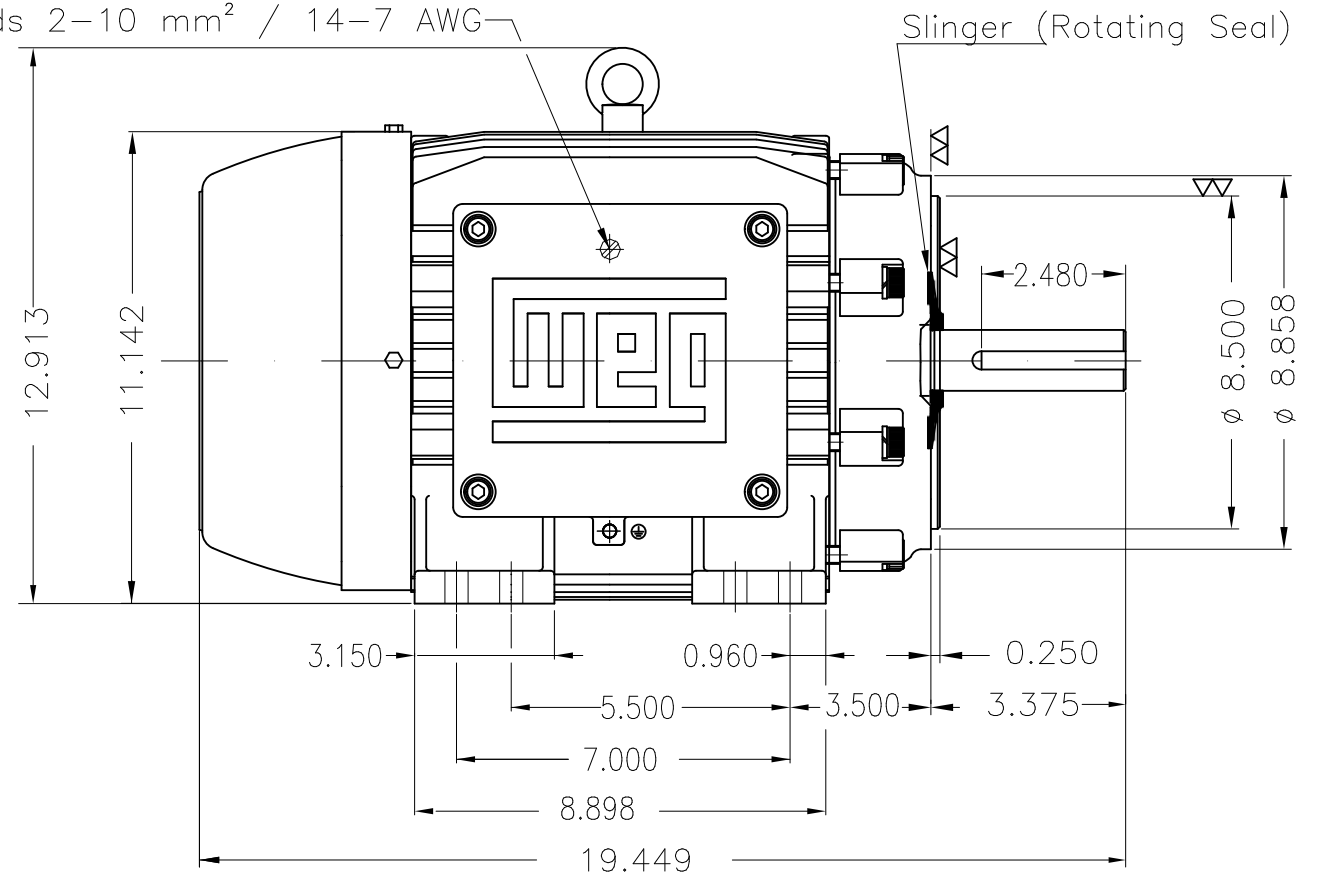
Thermal protection

ID	Application	Type	Quantity	Sensing Temperature
1	Winding	Thermostat - 2 wires	1 x Phase	155 °C

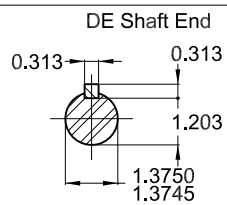
Rev.	Changes Summary	Performed	Checked	Date
Performed by		Page 2 / 2		Revision
Checked by				
Date	12/10/2023			



Grounding for leads 2-10 mm² / 14-7 AWG



- Packing - crate
- Color RAL 5009
- Painting plan 202P
- Mounting NEMA F-1
- Mounting B34R(D)



7.5 HP 04 Poles 60 Hz

ECM		LOC	SUMMARY OF MODIFICATIONS		HYBRISUSER					00
EXECUTED	HYBRISUSER		THREE PH. MOTOR EXPLOSION PROOF	NEMA PREM. EFF.	EXECUTED	CHECKED	RELEASED	DATE	VER	
CHECKED			FRAME 213/5TC IP55 TEFC							
RELEASED										
REL. DATE		WMO	Jaragua do Sul	Product Engineering						

PREVIEW

WDD 00

SHEET 1 / 1



MADE IN BRAZIL


W21X NEMA
Premium

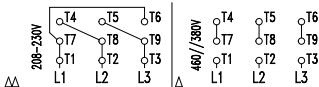
14578495

CC029A

Inverter Duty Motor
Severe Duty


MODEL 00718XT3E213TC

PH 3	FR 213/5TC	
HP(kW) 7.5(5.5)	HZ 60	IP55
V 230/460	A 18.8/9.41	
RPM 1765	NEMA NOM EFF 91.7%	
PF 0.80	SFA 21.6/10.8	DES B
INS CL F Δ T 80 K	SF 1.15	ENCL TEFC
DUTY CONT.	CODE H	ALT 1000 m.a.s.l.
AMB 40°C		
AMB 55°C	SF1.0	
7.5HP 5.5kW 50Hz 380V 11.2A 1460RPM SF1.00 EFF 89.5% (IE2)		


 → 6308-2RS MOBIL POLYREX EM
 → 6207-2RS

212 Lbs


 TEMP CODE T3C
 CSA/UL: Class I - Div. 1 - Groups C and D
 CSA: Class II - Div. 1 - Groups F and G
 CSA: Class I - Zone 1 - IIB

EXPLOSION PROOF MOTOR

FOR USE ON VPWM VFD 1000:1VT, 20:1CT, 1.0SF, T3C, AMB 40°C.