

DATA SHEET



Single Phase Induction Motor - Squirrel Cage

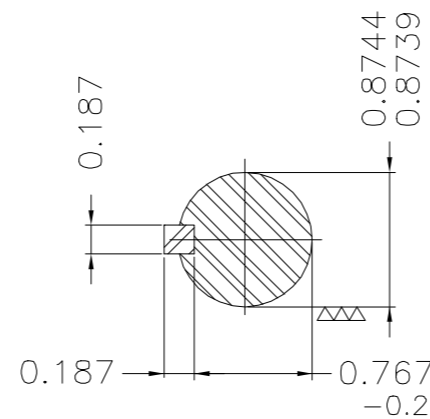
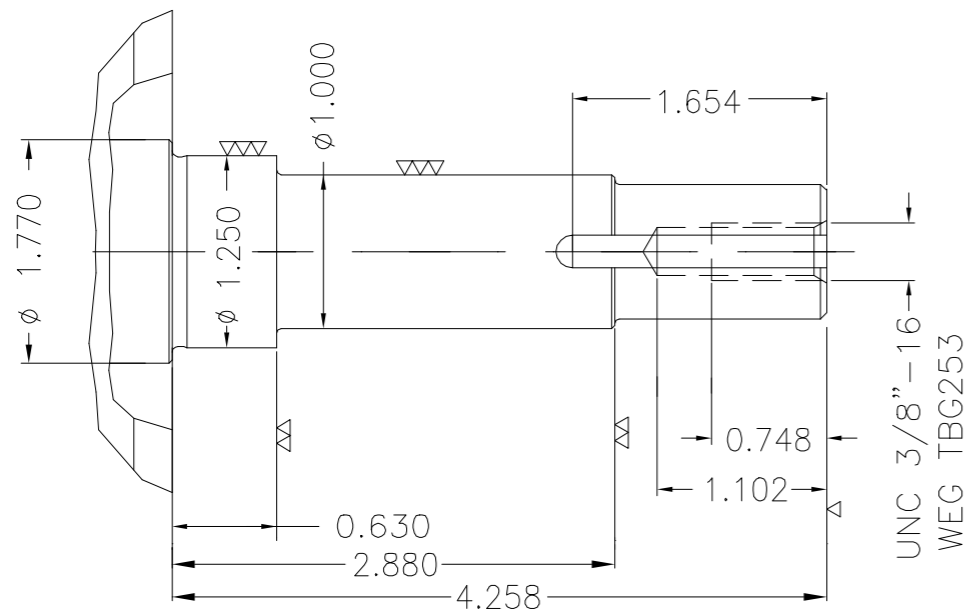
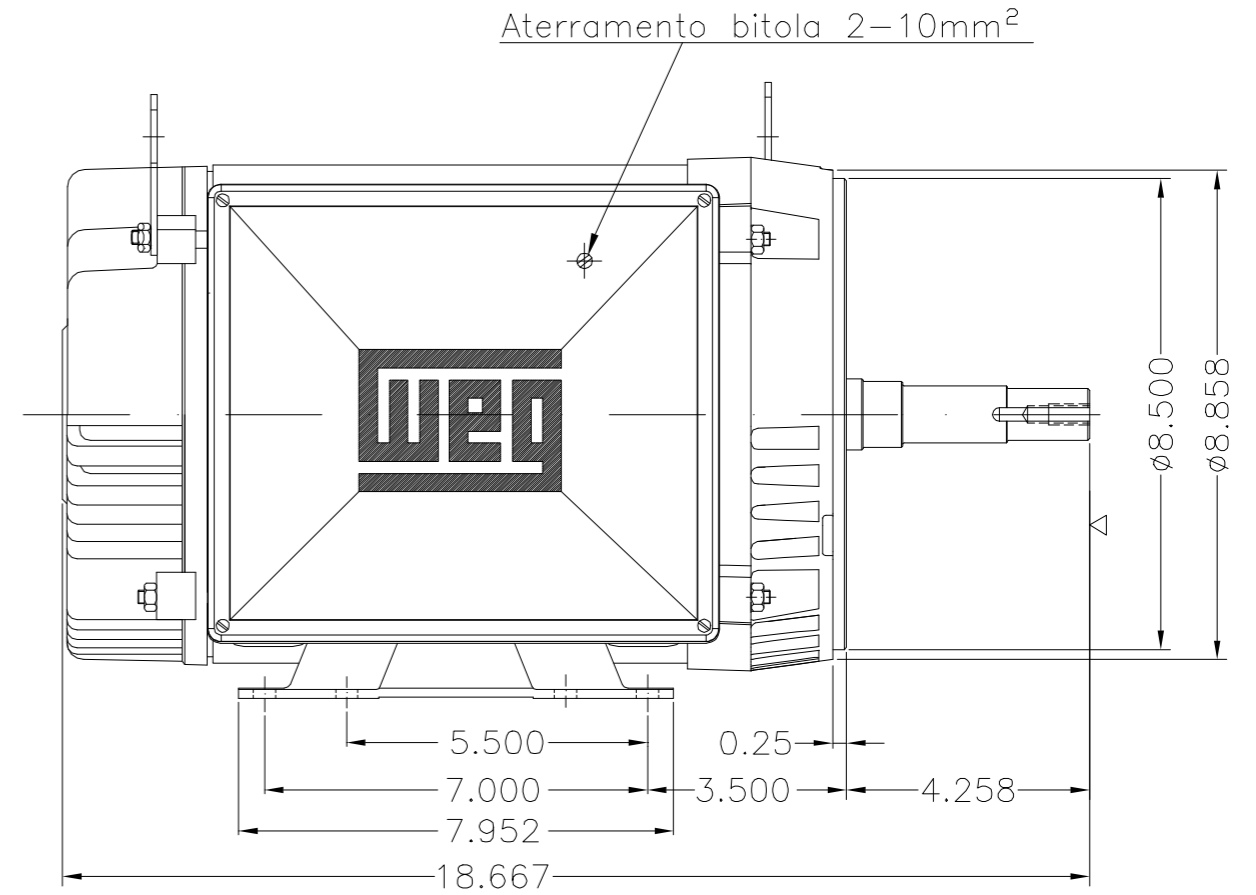
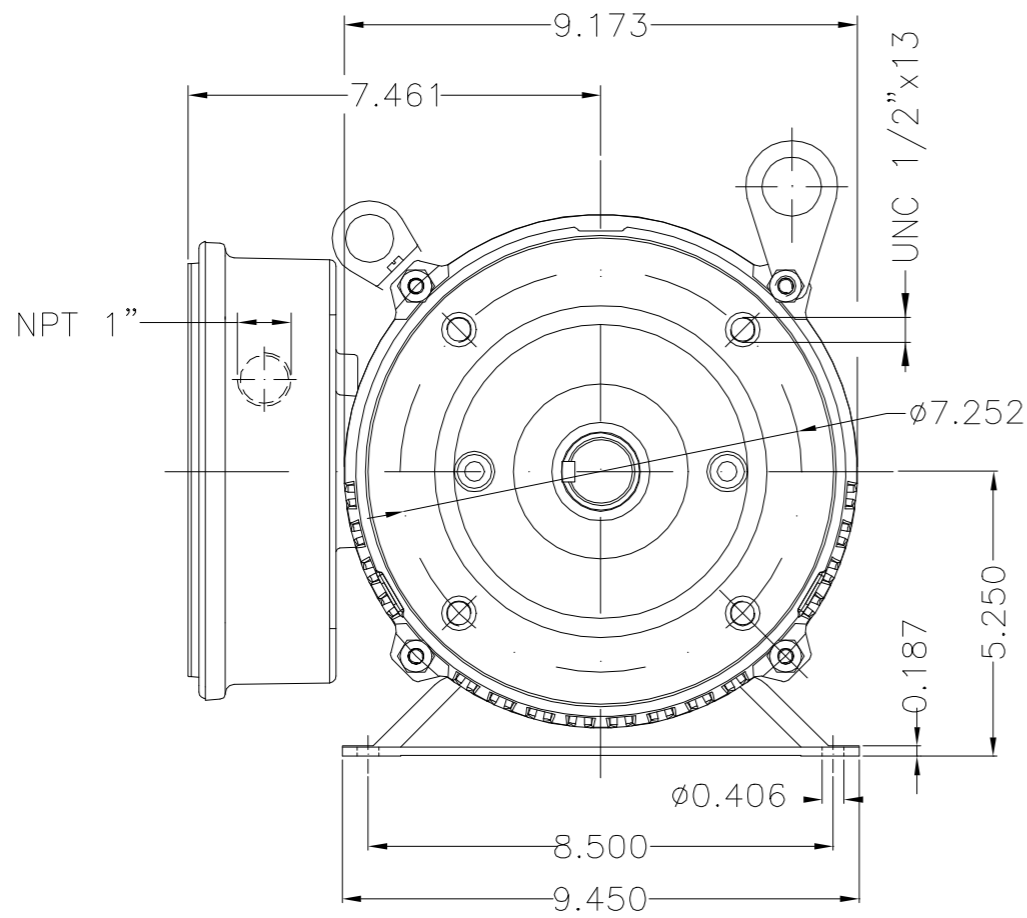
Customer :							
Product line : Close Coupled Pump Single-Phase			Product code : 12724449 Catalog # : 00736OS1C213JM				
Frame : 213/5JM Output : 7.5 HP (5.5 kW) Poles : 2 Frequency : 60 Hz Rated voltage : 208-230 V Rated current : 32.0-30.1 A L. R. Amperes : 256-241 A LRC : 8.0x(Code H) No load current : 0.000-8.00 A Rated speed : 3510 rpm Slip : 2.50 % Rated torque : 11.2 ft.lb Locked rotor torque : 220 % Breakdown torque : 229 % Insulation class : F Service factor : 1.15 Moment of inertia (J) : 0.4271 sq.ft.lb		Locked rotor time : 10s (cold) 6s (hot) Temperature rise : 80 K Duty cycle : Cont.(S1) Ambient temperature : -20°C to +40°C Altitude : 1000 m.a.s.l. Protection degree : IP21 Cooling method : IC01 - ODP Mounting : F-1 Rotation ¹ : CCW Starting method : Direct On Line Approx. weight ³ : 121 lb					
Output		25%	50%	75%	100%	Foundation loads	
Efficiency (%)		0.000	75.5	84.8	85.5	Max. traction : 85 lb	
Power Factor		0.00	0.83	0.90	0.93	Max. compression : 206 lb	
Bearing type		<u>Drive end</u> 6209 ZZ		<u>Non drive end</u> 6206 ZZ			
Sealing		Without Bearing Seal		Without Bearing Seal			
Lubrication interval		0 h		0 h			
Lubricant amount		0 g		0 g			
Lubricant type		Mobil Polyrex EM					
Notes							
This revision replaces and cancel the previous one, which must be eliminated. (1) Looking the motor from the shaft end. (2) Measured at 1m and with tolerance of +3dB(A). (3) Approximate weight subject to changes after manufacturing process. (4) At 100% of full load.				These are average values based on tests with sinusoidal power supply, subject to the tolerances stipulated in NEMA MG-1.			
Rev.	Changes Summary			Performed	Checked	Date	
Performed by							
Checked by						Page	Revision
Date	06/11/2023					1 / 1	

No reproduction of this drawing is allowed without written permission of WEG Motores

EIXO	
PADRÃO	X
OPCIONAL	
ESPECIAL	

Dimensões em polegadas
Dimensions in inches

THIS IS AN UPDATED REVISION, THE PREVIOUS ONE MUST BE DISREGARDED.



7.5 HP 02 Poles 60 Hz 413308921/0

Fator de serviço 1.15 / Service factor 1.15						
Forma construtiva F-1 (B34D) / Mounting F-1						
WEG ELECTRIC CORP.						
500000867612		ADC. ATERRAMENTO NA CAIXA	PATRICKL	RICLAV	14.03.2014	03
500000863926		ADC. COTA NO FLANGE	PATRICKL	RICLAV	05.03.2014	02
ECM	LOC	SUMMARY OF MODIFICATIONS	EXECUTED	CHECKED	RELEASED	DATE VER
EXECUTED	PATRICKL	 SINGLE PHASE MOTOR ODP FRAME 213/5JM IP21				
CHECKED						
RELEASED	JTOGNERI					
REL DT	24.01.2014	WMO	JARAGUA DO SUL	ENGENHARIA DE PRODUTO	10002674180 000 03 SHEET 1 / 1	

