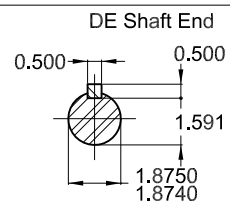
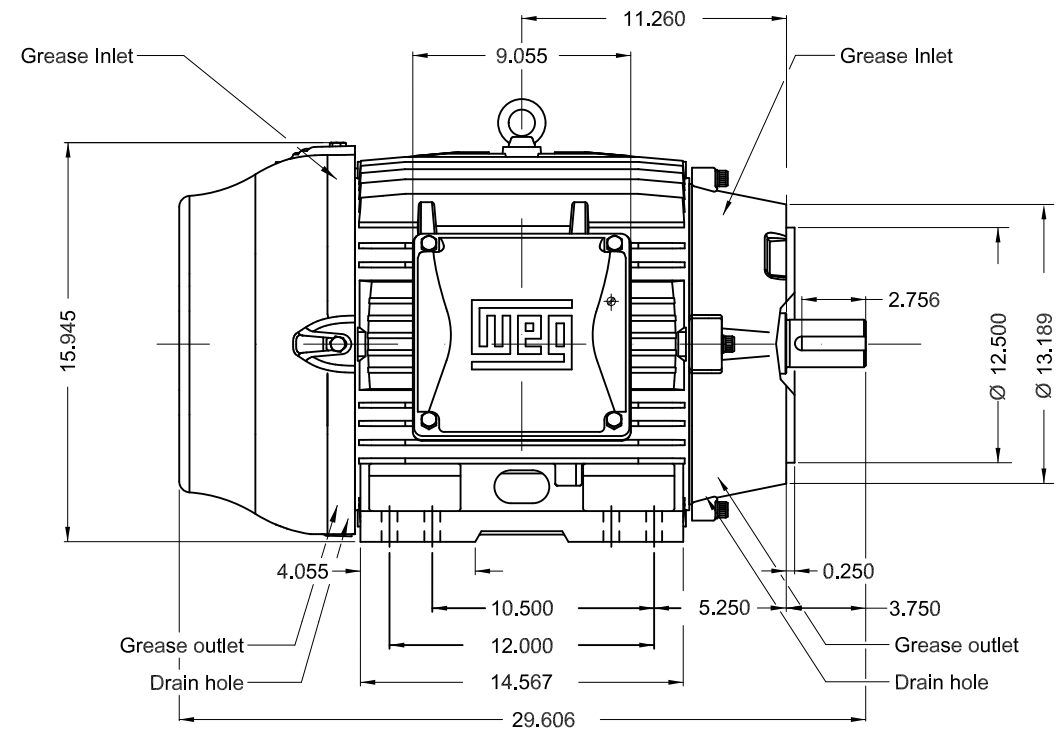
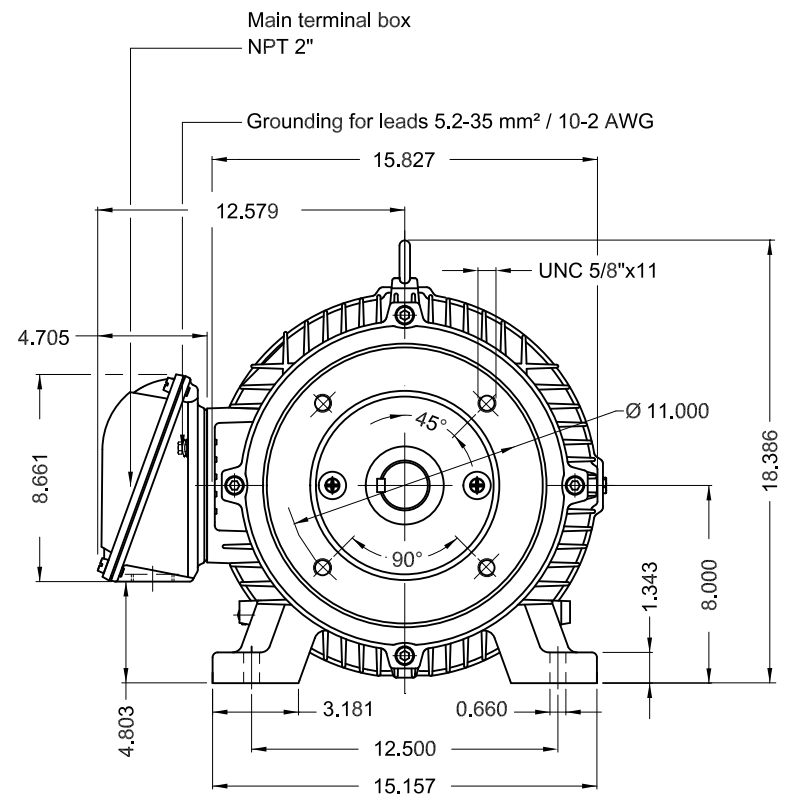


DATA SHEET



Three Phase Induction Motor - Squirrel Cage

Customer :						
Product line : W22 NEMA Premium Efficiency Three-Phase			Product code : 11440690		Catalog # : 05036ET3E326TSC-W22	
Frame : 324/6TSC Output : 50 HP (37 kW) Poles : 2 Frequency : 60 Hz Rated voltage : 230/460 V Rated current : 112/56.1 A L. R. Amperes : 707/353 A LRC : 6.3x(Code G) No load current : 28.0/14.0 A Rated speed : 3560 rpm Slip : 1.11 % Rated torque : 73.8 ft.lb Locked rotor torque : 240 % Breakdown torque : 240 % Insulation class : F Service factor : 1.25 Moment of inertia (J) : 5.75 sq.ft.lb Design : B			Locked rotor time : 36s (cold) 20s (hot) Temperature rise : 80 K Duty cycle : Cont.(S1) Ambient temperature : -20°C to +40°C Altitude : 1000 m.a.s.l. Protection degree : IP55 Cooling method : IC411 - TEFC Mounting : F-1 Rotation ¹ : Both (CW and CCW) Noise level ² : 76.0 dB(A) Starting method : Direct On Line Approx. weight ³ : 559 lb			
Output	25%	50%	75%	100%	Foundation loads	
Efficiency (%)	0.000	93.0	93.0	93.0	Max. traction	: 471 lb
Power Factor	0.00	0.81	0.87	0.89	Max. compression	: 1030 lb
Losses at normative operating points (speed;torque), in percentage of rated output power						
P1 (0,9;1,0)	P2 (0,5;1,0)	P3 (0,25;1,0)	P4 (0,9;0,5)	P5 (0,5;0,5)	P6 (0,5;0,25)	P7 (0,25;0,25)
6.8	4.4	3.5	4.1	2.0	1.5	0.7
			<u>Drive end</u>		<u>Non drive end</u>	
Bearing type	:	6312 C3		6212 C3		
Sealing	:	V'Ring		V'Ring		
Lubrication interval	:	12000 h		15000 h		
Lubricant amount	:	21 g		13 g		
Lubricant type	:	Mobil Polyrex EM				
Notes USABLE @208V 124A SF 1.10 SFA 136A						
This revision replaces and cancel the previous one, which must be eliminated. (1) Looking the motor from the shaft end. (2) Measured at 1m and with tolerance of +3dB(A). (3) Approximate weight subject to changes after manufacturing process. (4) At 100% of full load.				These are average values based on tests with sinusoidal power supply, subject to the tolerances stipulated in NEMA MG-1.		
Rev.	Changes Summary			Performed	Checked	Date
Performed by						
Checked by					Page	Revision
Date	03/11/2023				1 / 1	



Color RAL 5009
 Painting plan 203A
 Mounting B34R(D)

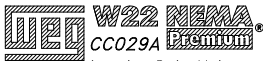
50 HP 02 Poles 60 Hz

						USERADMIN								00	
ECM	LOC	SUMMARY OF MODIFICATIONS				EXECUTED	CHECKED	RELEASED	DATE	VER					
EXECUTED	USERADMIN	THREE PH. MOTOR W22 NEMA PREM. EFF.				PREVIEW									
CHECKED		FRAME 324/6TSC IP55 TEFC				WDD		00							
RELEASED						SHEET		1 / 1							
REL. DATE		WMO	Jaragua do Sul	Product Engineering											

Dimensions in inches

XME A3

MODEL 05036ET3E326TSC-W22
MADE IN MEXICO
11440690

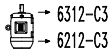
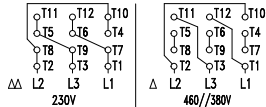


FOR SAFE AREA
MOD.TE1BFOXON



For 60Hz: Class I, Div 2, Gr. A, B, C and D - T3
Class I, Zone 2, IIC - T3
Class II, Div 2, Gr. F and G - T4
For 60Hz use on PWM, Gr. A, B, C, D and F,

PH 3	FR 324/6TSC	HP(kW) 50.0(37.0)	Hz 60
V 230/460	A 112/56.1	RPM 3550	DES B
NEMA NOM EFF 93.0 %	INS. CL. F Δ T 80 K	IP55	
ENCL TEFC	DUTY CONT.	AMB. 40°C	
CODE F	PF 0.89	SF 1.25	SFA 140/70.1
50HP 37kW 50Hz 380V 69.4A 2935RPM SF1.00 EFF 91.0%	ALT 1000 m.a.s.l.	591 Lbs	



MOBIL POLYREX EM
21 g 12000 h