

DATA SHEET



Three Phase Induction Motor - Squirrel Cage

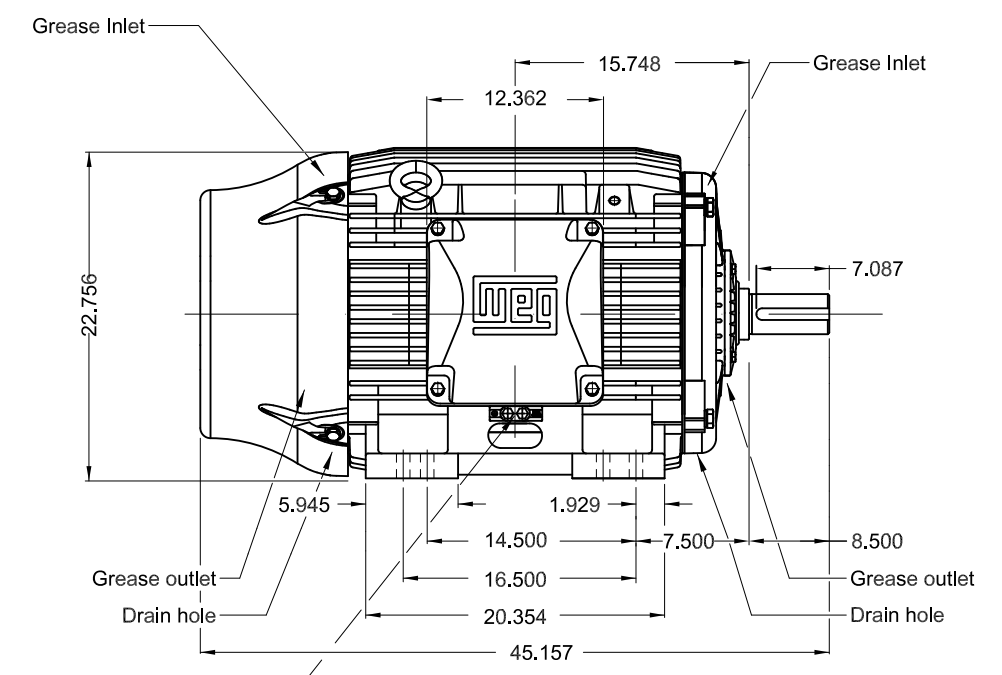
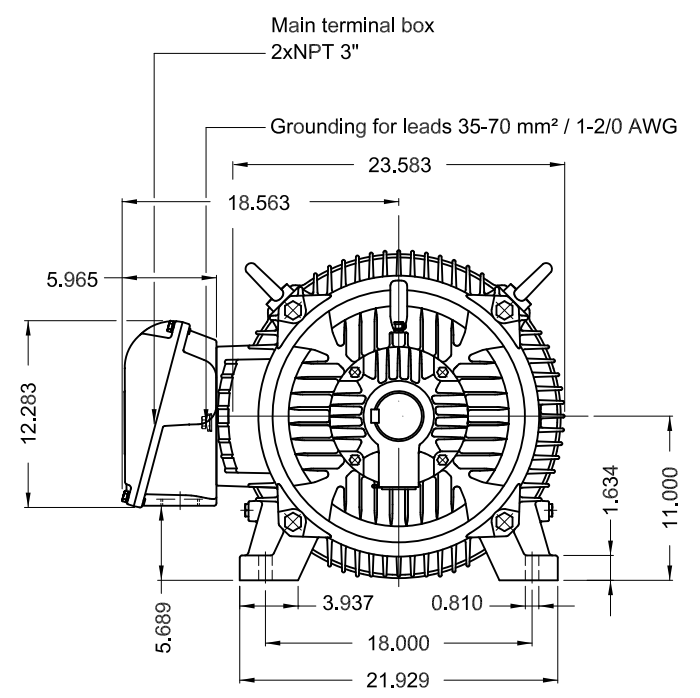
Customer :																
Product line : W22 NEMA Premium Efficiency Three-Phase	Product code : 11356035 Catalog # : 12518ET3G444T-W22															
Frame : 444/5T Output : 125 HP Poles : 4 Frequency : 60 Hz Rated voltage : 460 V Rated current : 139 A L. R. Amperes : 904 A LRC : 6.5x(Code G) No load current : 40.0 A Rated speed : 1785 rpm Slip : 0.83 % Rated torque : 368 ft.lb Locked rotor torque : 200 % Breakdown torque : 229 % Insulation class : F Service factor : 1.15 Moment of inertia (J) : 57.2 sq.ft.lb Design : B	Locked rotor time : 48s (cold) 27s (hot) Temperature rise : 80 K Duty cycle : Cont.(S1) Ambient temperature : -20°C to +40°C Altitude : 1000 m.a.s.l. Protection degree : IP55 Cooling method : IC411 - TEFC Mounting : F-1 Rotation ¹ : Both (CW and CCW) Noise level ² : 73.0 dB(A) Starting method : Direct On Line Approx. weight ³ : 1542 lb															
<table border="1" style="width:100%; border-collapse: collapse;"> <tr> <td>Output</td> <td>25%</td> <td>50%</td> <td>75%</td> <td>100%</td> </tr> <tr> <td>Efficiency (%)</td> <td>94.9</td> <td>95.0</td> <td>95.4</td> <td>95.4</td> </tr> <tr> <td>Power Factor</td> <td>0.52</td> <td>0.74</td> <td>0.82</td> <td>0.85</td> </tr> </table>	Output	25%	50%	75%	100%	Efficiency (%)	94.9	95.0	95.4	95.4	Power Factor	0.52	0.74	0.82	0.85	Foundation loads Max. traction : 1825 lb Max. compression : 3367 lb
Output	25%	50%	75%	100%												
Efficiency (%)	94.9	95.0	95.4	95.4												
Power Factor	0.52	0.74	0.82	0.85												
Losses at normative operating points (speed;torque), in percentage of rated output power																
P1 (0,9;1,0)	P2 (0,5;1,0)	P3 (0,25;1,0)	P4 (0,9;0,5)	P5 (0,5;0,5)	P6 (0,5;0,25)	P7 (0,25;0,25)										
4.5	3.4	3.1	2.4	1.4	0.9	0.5										
Bearing type : <u>Drive end</u> 6319 C3			<u>Non drive end</u> 6316 C3													
Sealing : WSeal			WSeal													
Lubrication interval : 8000 h			10000 h													
Lubricant amount : 45 g			34 g													
Lubricant type :			Mobil Polyrex EM													
Notes																
This revision replaces and cancel the previous one, which must be eliminated. (1) Looking the motor from the shaft end. (2) Measured at 1m and with tolerance of +3dB(A). (3) Approximate weight subject to changes after manufacturing process. (4) At 100% of full load.				These are average values based on tests with sinusoidal power supply, subject to the tolerances stipulated in NEMA MG-1.												
Rev.	Changes Summary			Performed	Checked	Date										
Performed by																
Checked by					Page	Revision										
Date	07/11/2023				1 / 1											

1 2 3 4 5 6

A

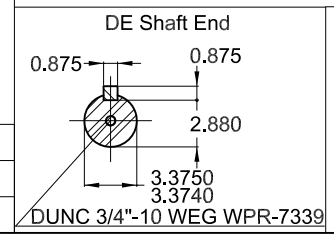
B

C



D

E



Color RAL 5009
 Painting plan 203A
 Mounting B3R(D)

125 HP 04 Poles 60 Hz A


						USERADMIN								00	
ECM	LOC	SUMMARY OF MODIFICATIONS				EXECUTED	CHECKED	RELEASED	DATE	VER					
EXECUTED	USERADMIN	THREE PH. MOTOR W22 NEMA PREM. EFF.										PREVIEW			
CHECKED		FRAME 444/5T IP55 TEFC										WDD 00			
RELEASED															
REL. DATE		WMO	Jaragua do Sul	Product Engineering	SHEET		1 / 1								



MADE IN MEXICO
11356035



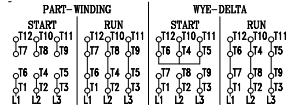
MODEL 12518ET3G444T-W22







Class I, Div 2, Gr A, B, C and D - T3
 Class I, Zone 2, IIC - T3
 Class II, Div 2, Gr F and G - T3C
 For use on PWM: Gr. A, B, C, D and F,
 VT 1000:1, CT 20:1, 1.00SF - T3A

Inverter Duty Motor
Severe Duty

PH3	60Hz	Fr. 444/5T	1000m.a.s.l.	IP55	TEFC	1542lb
V 460				A 139		
HP 125				kW 90		
SF 1.15				SFA 160		
RPM 1780				PF 0.85		
AMB 40°C				INS cl. F DT80K	NEMA NOM EFF 95.4%	
DUTY CONT.				DES B	Code G	



 → 6319-C3 (45g)
 → 6316-C3 (34g)

 MOBIL POLYREX EM (8000h)