

DATA SHEET

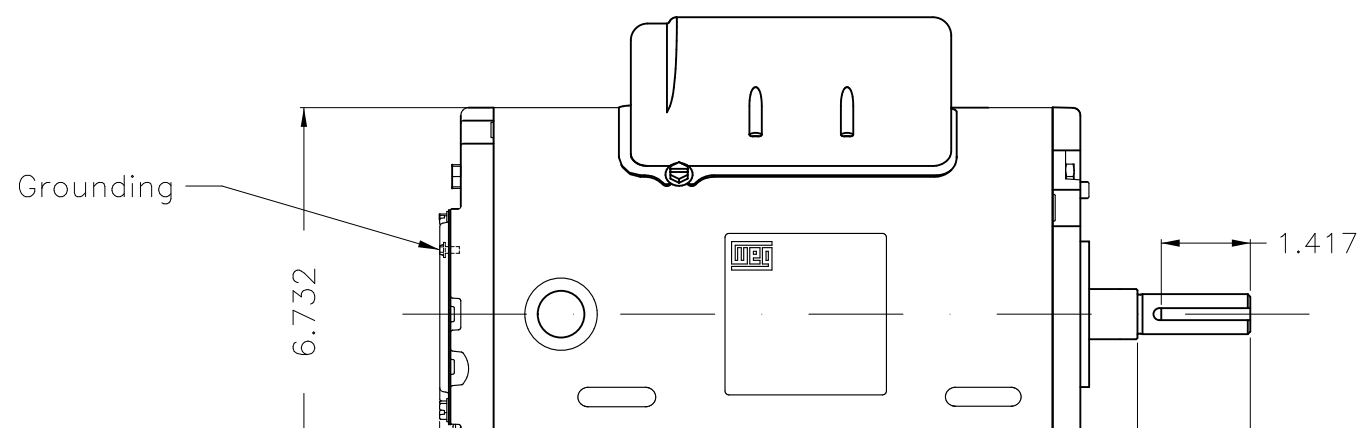
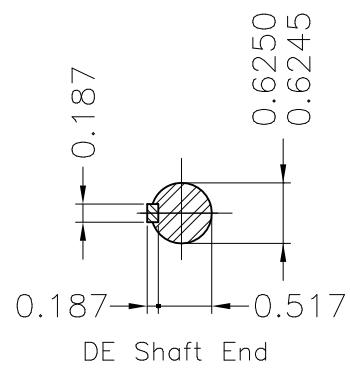
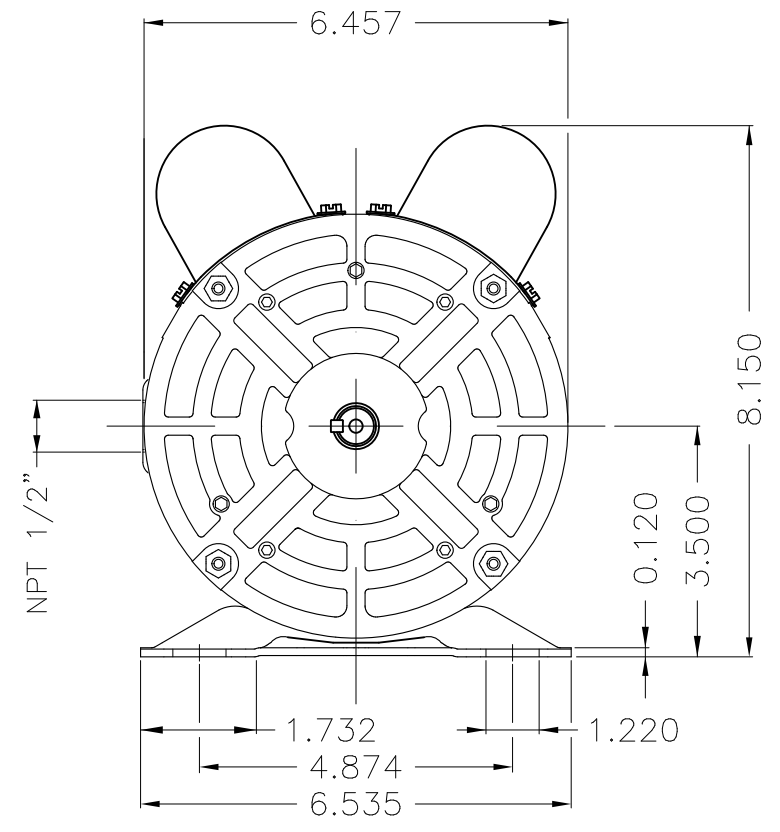


Single Phase Induction Motor - Squirrel Cage

Customer :					
Product line : Rolled Steel Single-Phase		Product code : 12882454			
		Catalog # : 002180T1B56-S			
Frame	: 56H	Locked rotor time	: 32s (cold) 18s (hot)		
Output	: 2 HP (1.5 kW)	Temperature rise	: 80 K		
Poles	: 4	Duty cycle	: Cont.(S1)		
Frequency	: 60 Hz	Ambient temperature	: -20°C to +40°C		
Rated voltage	: 115/208-230 V	Altitude	: 1000 m.a.s.l.		
Rated current	: 17.7/9.50-8.87 A	Cooling method	: IC01 - ODP		
L. R. Amperes	: 115/61.7-57.7 A	Mounting	: F-1		
LRC	: 6.5x(Code H)	Rotation ¹	: Both (CW and CCW)		
No load current	: 6.20/2.67-3.10 A	Noise level ²	: 52.0 dB(A)		
Rated speed	: 1730 rpm	Starting method	: Direct On Line		
Slip	: 3.89 %	Approx. weight ³	: 49.6 lb		
Rated torque	: 6.07 ft.lb				
Locked rotor torque	: 290 %				
Breakdown torque	: 225 %				
Insulation class	: F				
Service factor	: 1.15				
Moment of inertia (J)	: 0.1614 sq.ft.lb				
Design	: A				
Output	25%	50%	75%	100%	
Efficiency (%)	82.2	83.0	84.0	84.5	
Power Factor	0.49	0.75	0.83	0.87	
Foundation loads					
Max. traction : 109 lb					
Max. compression : 159 lb					
		<u>Drive end</u>	<u>Non drive end</u>		
Bearing type	:	6204 ZZ	6202 ZZ		
Sealing	:	Without Bearing Seal	Without Bearing Seal		
Lubrication interval	:	-	-		
Lubricant amount	:	-	-		
Lubricant type	:	Mobil Polyrex EM			
Notes					
This revision replaces and cancel the previous one, which must be eliminated.					
(1) Looking the motor from the shaft end.					
(2) Measured at 1m and with tolerance of +3dB(A).					
(3) Approximate weight subject to changes after manufacturing process.					
(4) At 100% of full load.					
These are average values based on tests with sinusoidal power supply, subject to the tolerances stipulated in NEMA MG-1.					
Rev.	Changes Summary		Performed	Checked	Date
Performed by					
Checked by					
Date	06/11/2023		Page	Revision	
			1 / 1		

1 2 3 4 5 6

A
B
C
D
E



Without alarm thermal protection	
Without overload protector at bearing	
Primer Only	
Without bearing cap	
Without drain hole	0.343
Without switch off thermal protection	3.000
Grease - Mobil Polyrex EM	5.000
Without Grease fitting	6.496
Class F insulation - 80K temperature rise	9.843
Without Space Heaters	13.858
NDE-bearing with double shield-ZZ	
Shaft material - SAE/ABNT 1040/45	
Rotation CW and CCW	
Packing - cardboard box	
Dipping impregnation - polyester	
Without terminal block	
DE-bearing with double shield-ZZ	
Carbon Steel screws	
Design A	
Without fan	
A key	
Without bearing sealing	
Vibration grade A	
Without coating	
Mounting F-1/B3R(D)	

ECM	LOC	SUMMARY OF MODIFICATIONS	EXECUTED	CHECKED	RELEASED	DATE	VER
EXECUTED	USERADMIN	SINGLE PH. MOTOR ROLLED STEEL PREM. EFF. FRAME 56H IP21 ODP					
CHECKED							
RELEASED							
REL. DATE	WMO	Jaragua do Sul	Product Engineering	PREVIEW	WDD	00	1 / 1

2 HP 04 Poles 60 Hz

A SHEET 1 / 1

Dimensions in inches XME A3



MADE IN BRAZIL

MAT: 12882454

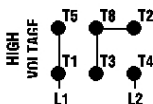
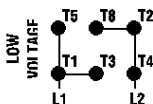
W01.M001C0X0X

MODEL 002180T1B56-S

23OCT2023 B/N:

PH 1	Hz 60	HP 2.0
FR 56H		kW 1.5
DUTY CONT.		V 115/230
ALT 1000 m.a.s.l		A 18.6/9.30
INS CL F ΔT 80K		SFA -
AMB 40°C	DES A	SF 1.15
ENCL ODP	CODE K	PF 0.83
		RPM 1740
		AVG. F.L. EFF. 84.5%
Electric Motor		
DE 6204-ZZ	ODE 6202-ZZ	MOBIL POLYREX EM

REVERSE ROTATION INVERT T5 BY T8



T1 - BLU
 T2 - WHT
 T3 - ORG
 T4 - YEL
 T5 - BLK
 T8 - RED



WARNING: Motor must be grounded in accordance with local and national electrical codes to prevent serious electrical shocks. Disconnect power source before servicing unit.



AVERTISSEMENT: Le moteur doit être mis à la terre conformément aux codes électriques locaux et nationaux afin d'éviter tout choc électrique grave. Déconnectez l'alimentation avant l'entretien de la machine.

