

# DATA SHEET

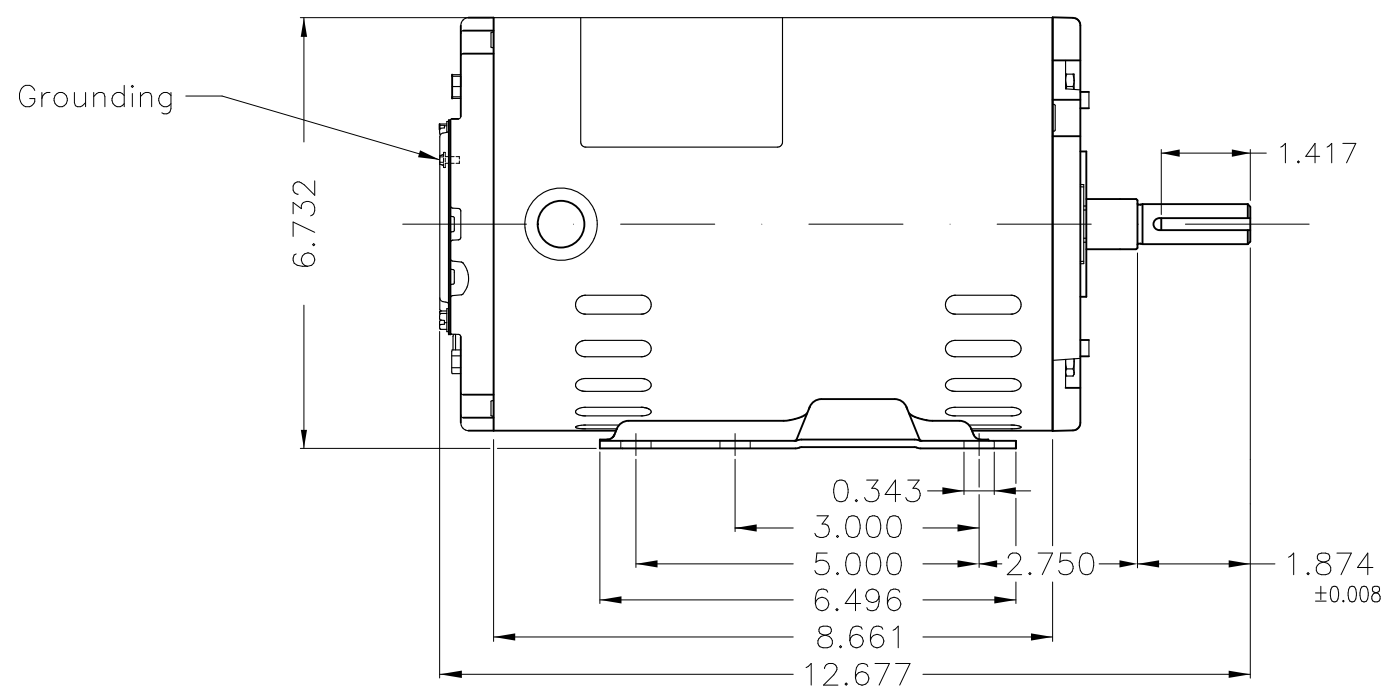
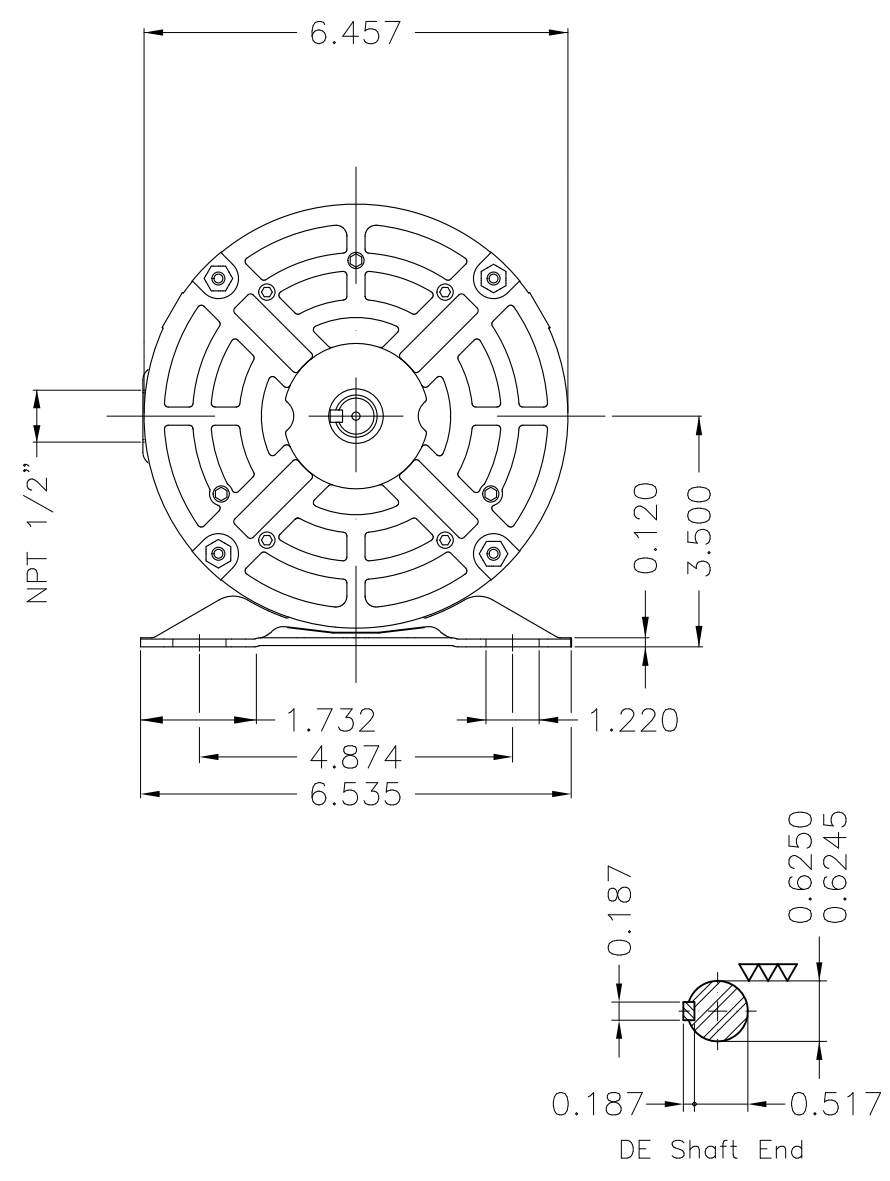


## Three Phase Induction Motor - Squirrel Cage

Customer :					
Product line : Rolled Steel Premium Efficiency Three-Phase		Product code : 12759194			
		Catalog # : 002180T3E56-S			
Frame : 56H Output : 2 HP (1.5 kW) Poles : 4 Frequency : 60 Hz Rated voltage : 230/460 V Rated current : 5.38/2.69 A L. R. Amperes : 41.4/20.7 A LRC : 7.7x(Code K) No load current : 2.75/1.38 A Rated speed : 1740 rpm Slip : 3.33 % Rated torque : 6.04 ft.lb Locked rotor torque : 260 % Breakdown torque : 320 % Insulation class : F Service factor : 1.15 Moment of inertia (J) : 0.1168 sq.ft.lb Design : A		Locked rotor time : 30s (cold) 17s (hot) Temperature rise : 80 K Duty cycle : Cont.(S1) Ambient temperature : -20°C to +40°C Altitude : 1000 m.a.s.l. Cooling method : IC01 - ODP Mounting : F-1 Rotation <sup>1</sup> : Both (CW and CCW) Noise level <sup>2</sup> : 52.0 dB(A) Starting method : Direct On Line Approx. weight <sup>3</sup> : 37.7 lb			
Output	25%	50%	75%	100%	
Efficiency (%)	85.2	85.5	86.5	86.5	
Power Factor	0.36	0.61	0.74	0.81	
Foundation loads					
Max. traction : 183 lb					
Max. compression : 221 lb					
Bearing type :		<u>Drive end</u>	<u>Non drive end</u>		
Sealing :		6204 ZZ	6202 ZZ		
Lubrication interval :		Without Bearing Seal			
Lubricant amount :		-			
Lubricant type :		Mobil Polyrex EM			
Notes USABLE @208V 5.95A SF 1.00 SFA 5.95A					
This revision replaces and cancel the previous one, which must be eliminated. (1) Looking the motor from the shaft end. (2) Measured at 1m and with tolerance of +3dB(A). (3) Approximate weight subject to changes after manufacturing process. (4) At 100% of full load.			These are average values based on tests with sinusoidal power supply, subject to the tolerances stipulated in NEMA MG-1.		
Rev.	Changes Summary		Performed	Checked	Date
Performed by					
Checked by				Page	Revision
Date	06/11/2023			1 / 1	

1 2 3 4 5 6

A  
B  
C  
D  
E



Without coating									
Mounting F-1/B3R(D)									
					USERADMIN	00			
ECM	LOC	SUMMARY OF MODIFICATIONS			EXECUTED	CHECKED	RELEASED	DATE	VER
EXECUTED	USERADMIN	THREE PH. MOTOR ROLLED STEEL PREM. EFF.			PREVIEW		WDD   00		
CHECKED		FRAME 56H IP21 ODP							
RELEASED									
REL. DATE		WMO	Jaragua do Sul	Product Engineering	SHEET	1 / 1			

2 HP 04 Poles 60 Hz

A



Dimensions in inches XME A3

**NEMA**  
**Premium**3PT9  
C US LISTEDC US  
Energy Verified

MADE IN MEXICO

MAT: 12759194

W01.T00IC0X0X

MODEL 002180T3E56-S

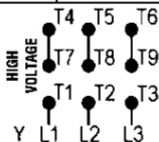
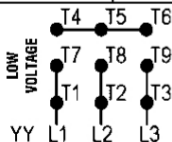
07NOV2023 B/N:

PH 3	Hz 60	HP 2.0
FR 56H		kW 1.5
DUTY CONT.		V 230/460
ALT 1000 m.a.s.l		A 5.38/2.69
INS CL F ΔT 80K		SFA 6.19/3.09
AMB 40°C	DES A	SF 1.15
ENCL ODP	CODE K	PF 0.81
		RPM 1740
		NEMA NOM. EFF 86.5%

ALTERNATE RATING: 2.0HP	50Hz	190-220/380-415V	SF1.00
6.52-5.79/3.26-3.07A	1410RPM	EFF 82.2%	{IE1} IEC 60034-1

Inverter duty motor For 60Hz use on VPWM 1000:1 VT, 5:1 CT

DE 6204-ZZ	ODE 6202-ZZ	MOBIL POLYREX EM	
------------	-------------	------------------	--



T1-BLU T2-WHT  
 T3-ORG T4-YEL  
 T5-BLK T6-GRY  
 T7-PNK T8-RED  
 T9-RED BRK

INTERCHANGE ANY TWO LINE WIRES TO REVERSE THE ROTATION

**WARNING:** Motor must be grounded in accordance with local and national electrical codes to prevent serious electrical shocks. Disconnect power source before servicing unit.



**AVERTISSEMENT:** Le moteur doit être mis à la terre conformément aux codes électriques locaux et nationaux afin d'éviter tout choc électrique grave. Déconnectez l'alimentation avant l'entretien de la machine.

