

DATA SHEET

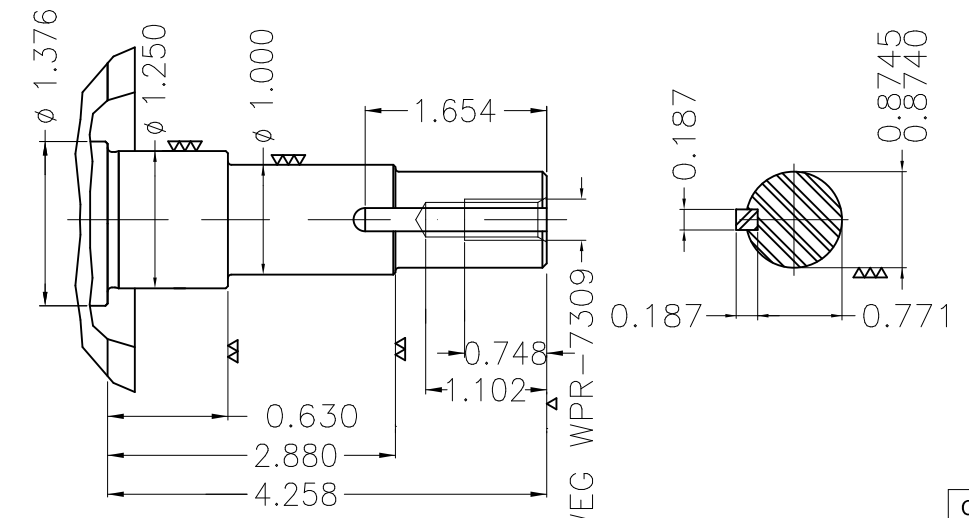
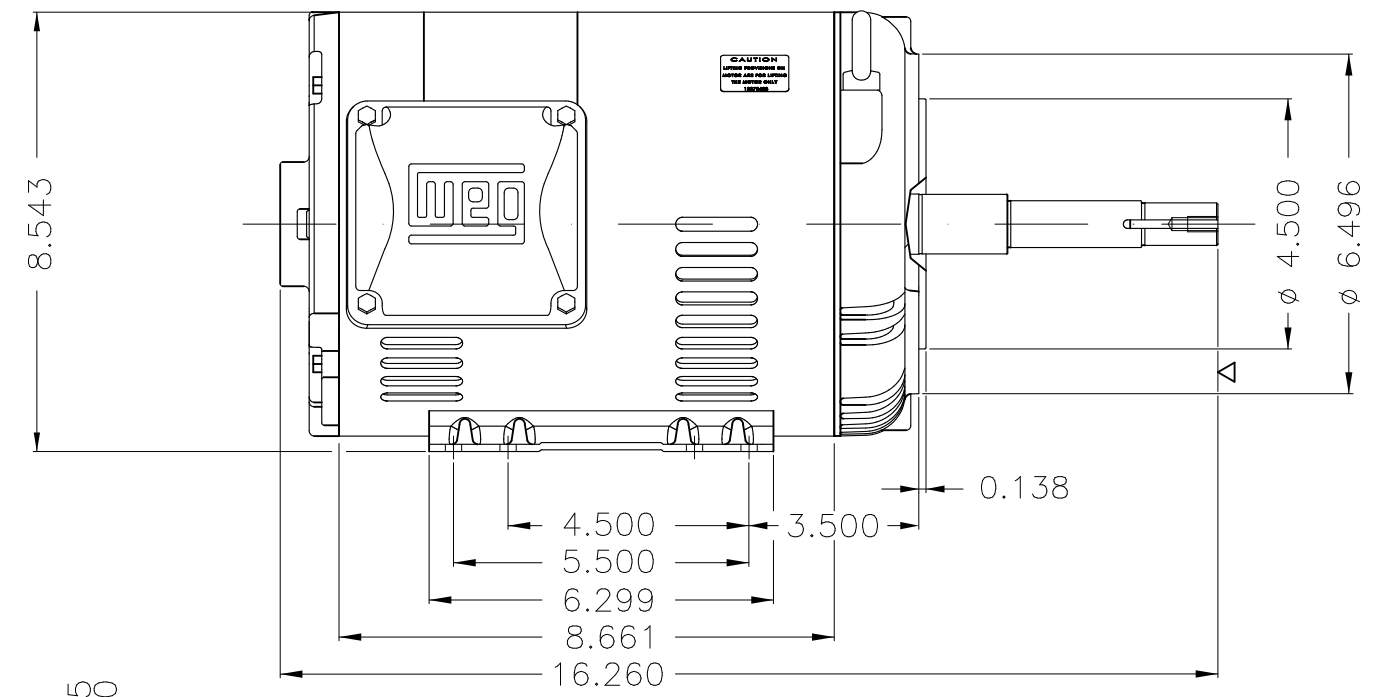
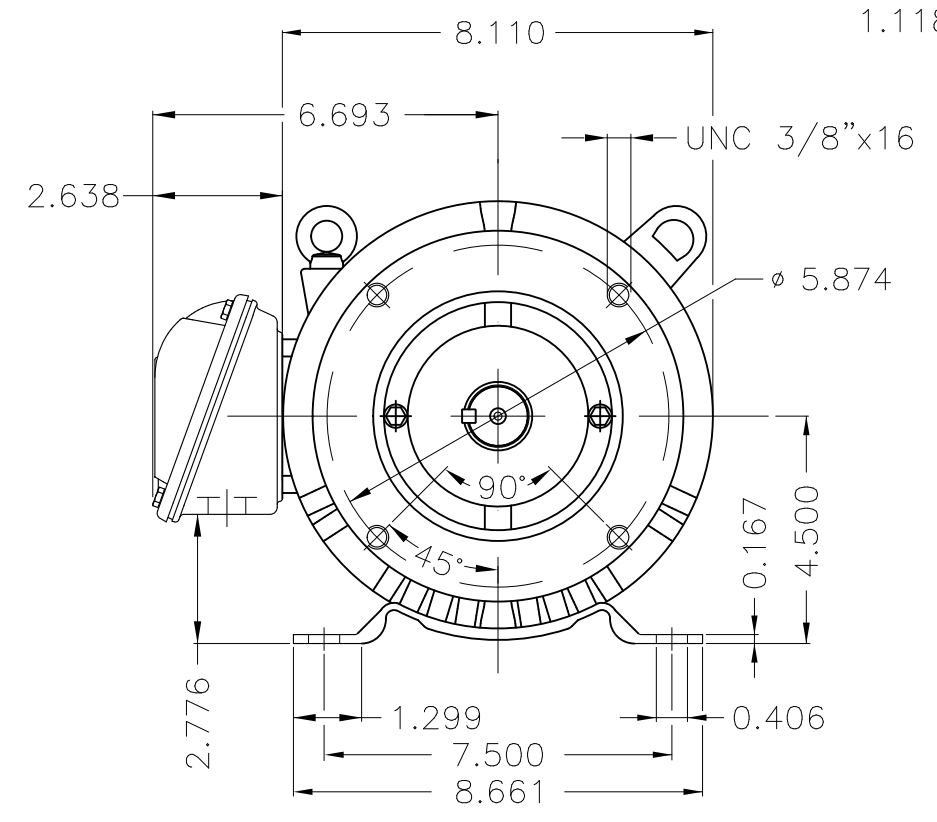
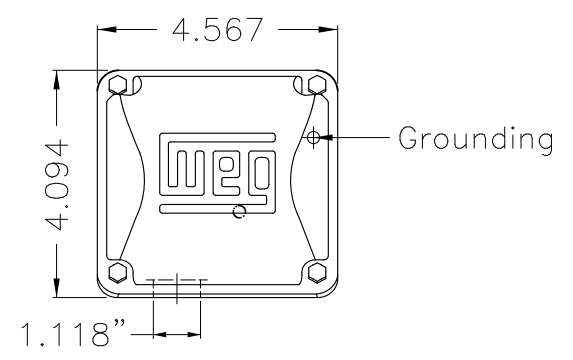


Three Phase Induction Motor - Squirrel Cage

Customer :					
Product line : Rolled Steel JM Pump NEMA Premium Efficiency Three-Phase		Product code : 12676949			
		Catalog # : 00536OT3E182JM-S			
Frame	: 182/4JM	Locked rotor time	: 21s (cold) 12s (hot)		
Output	: 5 HP (3.7 kW)	Temperature rise	: 80 K		
Poles	: 2	Duty cycle	: Cont.(S1)		
Frequency	: 60 Hz	Ambient temperature	: -20°C to +40°C		
Rated voltage	: 230/460 V	Altitude	: 1000 m.a.s.l.		
Rated current	: 12.2/6.10 A	Cooling method	: IC01 - ODP		
L. R. Amperes	: 92.7/46.4 A	Mounting	: F-1		
LRC	: 7.6x(Code J)	Rotation ¹	: Both (CW and CCW)		
No load current	: 5.15/2.58 A	Noise level ²	: 65.0 dB(A)		
Rated speed	: 3510 rpm	Starting method	: Direct On Line		
Slip	: 2.50 %	Approx. weight ³	: 67.2 lb		
Rated torque	: 7.48 ft.lb				
Locked rotor torque	: 190 %				
Breakdown torque	: 300 %				
Insulation class	: F				
Service factor	: 1.15				
Moment of inertia (J)	: 0.1386 sq.ft.lb				
Design	: B				
Output	25%	50%	75%	100%	
Efficiency (%)	85.2	85.5	86.5	86.5	
Power Factor	0.45	0.73	0.83	0.88	
		Foundation loads			
		Max. traction : 122 lb			
		Max. compression : 189 lb			
		<u>Drive end</u>	<u>Non drive end</u>		
Bearing type	:	6207 ZZ	6205 ZZ		
Sealing	:	Without Bearing Seal	Without Bearing Seal		
Lubrication interval	:	-	-		
Lubricant amount	:	-	-		
Lubricant type	:	Mobil Polyrex EM			
Notes					
USABLE @208V 13.5A SF 1.00 SFA 13.5A					
This revision replaces and cancel the previous one, which must be eliminated.		These are average values based on tests with sinusoidal power supply, subject to the tolerances stipulated in NEMA MG-1.			
(1) Looking the motor from the shaft end.					
(2) Measured at 1m and with tolerance of +3dB(A).					
(3) Approximate weight subject to changes after manufacturing process.					
(4) At 100% of full load.					
Rev.	Changes Summary		Performed	Checked	Date
Performed by					
Checked by					
Date	06/11/2023			Page	Revision
				1 / 1	

1 2 3 4 5 6

A
B
C
D
E



EUNC 3/8" - 16 WEG WPR-7309

DE Shaft End

Color Munsell N 1 matte black									
Painting plan 207N									
Mounting F-1/B34R(D)									
					USERADMIN	00			
ECM	LOC	SUMMARY OF MODIFICATIONS			EXECUTED	CHECKED	RELEASED	DATE	VER
EXECUTED	USERADMIN	THREE PH. MOTOR ROLLED STEEL CLOSE COUPLED PUMP IN TYPE NEW PREM. EFF.							
CHECKED		FRAME 182/4JM IP21 ODP							
RELEASED									
REL. DATE		WMO	Jaragua do Sul	Product Engineering	WDD	00			
					SHEET	1 / 1			

5 HP 02 Poles 60 Hz

**NEMA**
Premium

3PT9

US LISTED



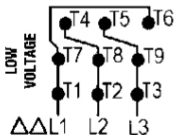
MADE IN MEXICO

MAT: 12676949 CC029A

W01.T00IC0X0N

MODEL 005360T3E182JM-S

PH 3	Hz 60	HP 5.0
FR 182/4JM		kW 3.7
DUTY CONT.		V 230/460
ALT 1000 m.a.s.l		A 12.2/6.10
INS CL F ΔT 80K		SFA 14.0/7.01
AMB 40°C	DES B	SF 1.15
ENCL ODP	CODE J	PF 0.88
		RPM 3510
		NEMA NOM. EFF 86.5%
ALTERNATE RATING: 5.0HP 50Hz 190-220/380-415V SF1.00		
14.7-13.0/7.37-6.87A 2885RPM EFF 83.8% (IE1) IEC 60034-1		
Inverter duty motor For 60Hz use on VPWM 1000:1 VT, 3:1 CT		
DE 6207-ZZ	ODE 6205-ZZ	MOBIL POLYREX EM



T1-BLU T2-WHT
 T3-ORG T4-YEL
 T5-BLK T6-GRY
 T7-PNK T8-RED
 T9-RED BRK

INTERCHANGE ANY TWO LINE WIRES TO REVERSE THE ROTATION

WARNING: Motor must be grounded in accordance with local and national electrical codes to prevent serious electrical shocks. Disconnect power source before servicing unit.



AVERTISSEMENT: Le moteur doit être mis à la terre conformément aux codes électriques locaux et nationaux afin d'éviter tout choc électrique grave. Déconnectez l'alimentation avant l'entretien de la machine.

