

# DATA SHEET



## Three Phase Induction Motor - Squirrel Cage

Customer :					
Product line : Rolled Steel JM Pump NEMA Premium Efficiency Three-Phase		Product code : 13440213			
		Catalog # : 01036ET3E215JM-S			
Frame	: 213/5JM	Locked rotor time	: 21s (cold) 12s (hot)		
Output	: 10 HP (7.5 kW)	Temperature rise	: 80 K		
Poles	: 2	Duty cycle	: Cont.(S1)		
Frequency	: 60 Hz	Ambient temperature	: -20°C to +40°C		
Rated voltage	: 230/460 V	Altitude	: 1000 m.a.s.l.		
Rated current	: 23.0/11.5 A	Protection degree	: IP55		
L. R. Amperes	: 173/86.2 A	Cooling method	: IC411 - TEFC		
LRC	: 7.5x(Code H)	Mounting	: F-1		
No load current	: 7.53/3.77 A	Rotation <sup>1</sup>	: Both (CW and CCW)		
Rated speed	: 3530 rpm	Noise level <sup>2</sup>	: 70.0 dB(A)		
Slip	: 1.94 %	Starting method	: Direct On Line		
Rated torque	: 14.9 ft.lb	Approx. weight <sup>3</sup>	: 164 lb		
Locked rotor torque	: 260 %				
Breakdown torque	: 300 %				
Insulation class	: F				
Service factor	: 1.15				
Moment of inertia (J)	: 0.7188 sq.ft.lb				
Design	: B				
Output	25%	50%	75%	100%	
Efficiency (%)	89.3	89.5	90.2	90.2	
Power Factor	0.53	0.80	0.88	0.91	
		Foundation loads			
		Max. traction : 202 lb			
		Max. compression : 366 lb			
		<u>Drive end</u>	<u>Non drive end</u>		
Bearing type	:	6209 ZZ	6206 ZZ		
Sealing	:	V'Ring	Without Bearing Seal		
Lubrication interval	:	-	-		
Lubricant amount	:	-	-		
Lubricant type	:	Mobil Polyrex EM			
Notes					
USABLE @208V 25.4A SF 1.00 SFA 25.4A					
This revision replaces and cancel the previous one, which must be eliminated. (1) Looking the motor from the shaft end. (2) Measured at 1m and with tolerance of +3dB(A). (3) Approximate weight subject to changes after manufacturing process. (4) At 100% of full load.			These are average values based on tests with sinusoidal power supply, subject to the tolerances stipulated in NEMA MG-1.		
Rev.	Changes Summary		Performed	Checked	Date
Performed by					
Checked by					
Date	06/11/2023			Page	Revision
				1 / 1	

1 2 3 4 5 6

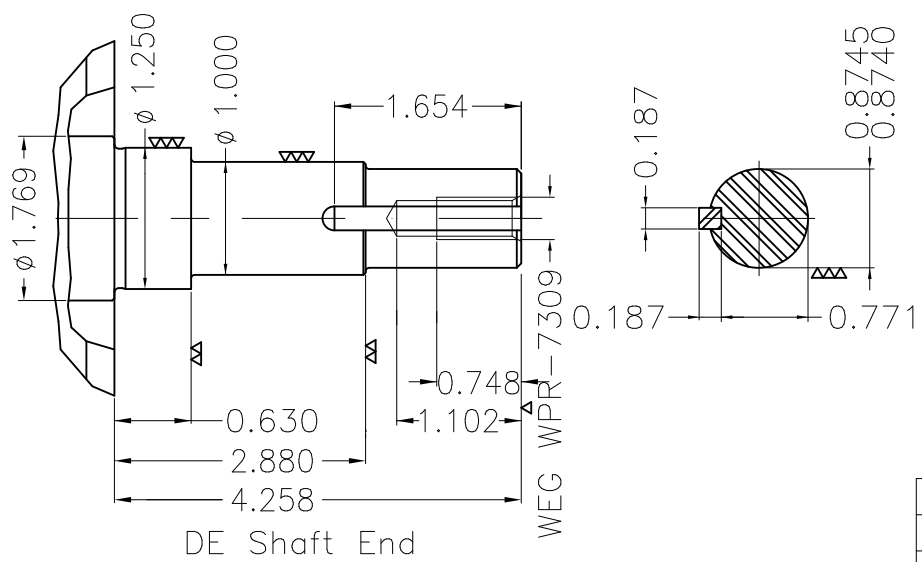
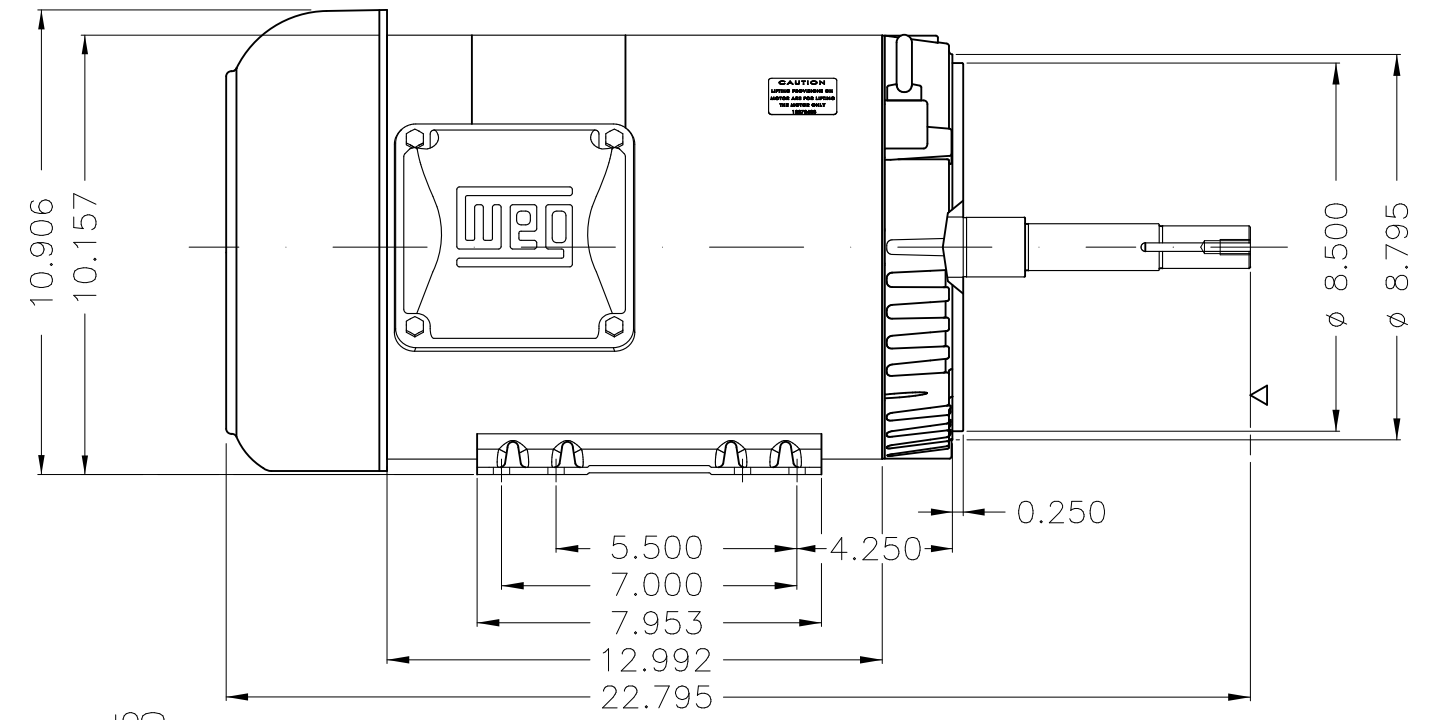
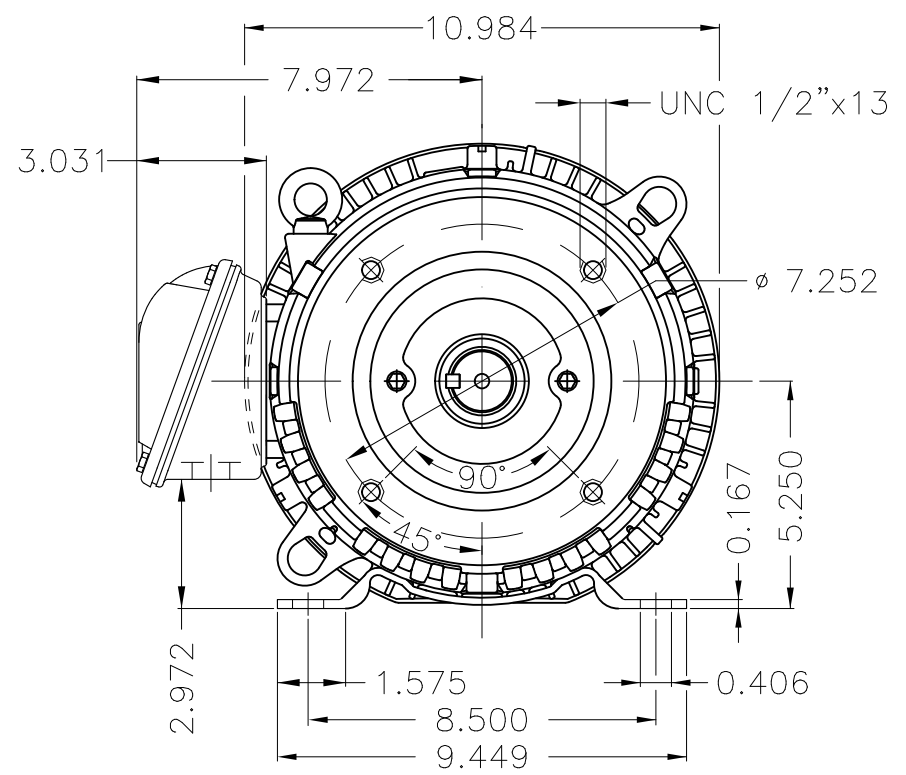
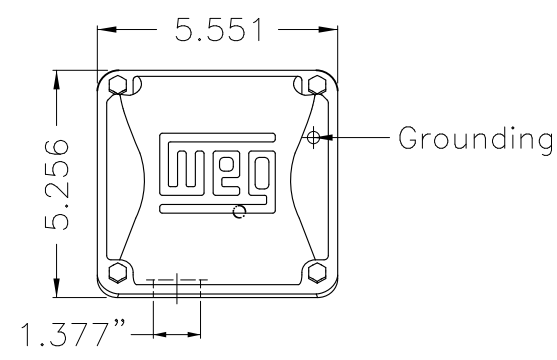
A

B

C

D

E



EUNC 3/8"-16 WEG WPR-7309

DE Shaft End

Color Munsell N 1 matte black									
Painting plan 207N									
Mounting F-1/B34R(D)									
					USERADMIN	00			
ECM	LOC	SUMMARY OF MODIFICATIONS			EXECUTED	CHECKED	RELEASED	DATE	VER
EXECUTED	USERADMIN	THREE PH. MOTOR ROLLED STEEL CLOSE COUPLED PUMP IN TYPE NEW PREM. EFF.							
CHECKED		FRAME 213/5JM IP55 TEFC							
RELEASED									
REL. DATE		WMO	Jaragua do Sul	Product Engineering	WDD	00	1 / 1		

10 HP 02 Poles 60 Hz



Dimensions in inches XME A3

**NEMA**  
**Premium**3PT9  
**UL** US LISTED  
FOR SAFE AREA**SP** US  
Energy Verified

MADE IN MEXICO

MAT: 13440213 CC029A

W01.TE0IC0X0N

MODEL 01036ET3E215JM-S

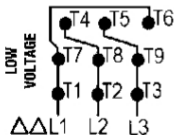
For 60Hz: Class I, Zone 2, IIC  
Class I, Div.2, Gr. A,B,C,D - T3  
Div 2 Inverter Duty (SF1.00)  
CT 2:1/VT 1000:1

PH 3	Hz 60	HP 10
FR 213/5JM		KW 7.5
DUTY CONT.		V 230/460
ALT 1000 m.a.s.l		A 23.0/11.5
INS CL F ΔT 80K	IP55	SFA 26.4/13.2
AMB 40°C	DES B	SF 1.15
ENCL TEFC	CODE H	PF 0.91
		RPM 3530
		NEMA NOM. EFF 90.2%

ALTERNATE RATING: 10HP	50Hz	190-220/380-415V	SF1.00
28.4-24.3/14.2-12.9A	2900RPM	EFF 87.2%	{IE1} IEC 60034-1

For safe area-Inverter duty motor For 60Hz use on VPWM 1000:1 VT, 10:1 CT

DE 6209-ZZ	ODE 6206-ZZ	MOBIL POLYREX EM
------------	-------------	------------------



T1-BLU T2-WHT  
T3-ORG T4-YEL  
T5-BLK T6-GRY  
T7-PNK T8-RED  
T9-RED BRK

INTERCHANGE ANY TWO LINE WIRES TO REVERSE THE ROTATION

**WARNING:** Motor must be grounded in accordance with local and national electrical codes to prevent serious electrical shocks. Disconnect power source before servicing unit.



**AVERTISSEMENT:** Le moteur doit être mis à la terre conformément aux codes électriques locaux et nationaux afin d'éviter tout choc électrique grave. Déconnectez l'alimentation avant l'entretien de la machine.

