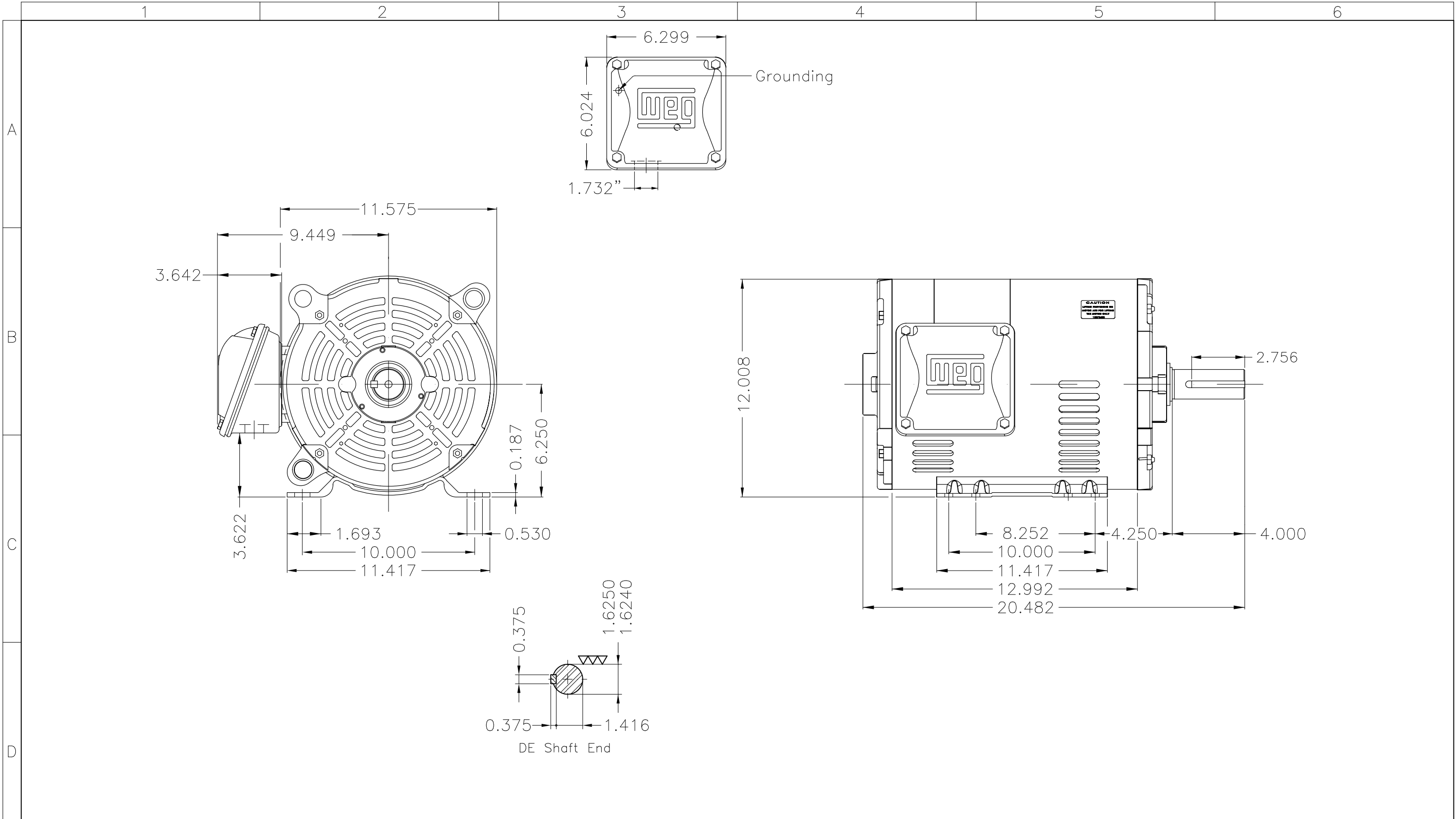


DATA SHEET



Three Phase Induction Motor - Squirrel Cage

Customer :					
Product line : Rolled Steel NEMA Premium Efficiency Three-Phase		Product code : 12502805			
		Catalog # : 01518OT3E254T-S			
Frame : 254/6T Output : 15 HP (11 kW) Poles : 4 Frequency : 60 Hz Rated voltage : 230/460 V Rated current : 37.2/18.6 A L. R. Amperes : 249/125 A LRC : 6.7x(Code H) No load current : 19.0/9.50 A Rated speed : 1775 rpm Slip : 1.39 % Rated torque : 44.4 ft.lb Locked rotor torque : 240 % Breakdown torque : 300 % Insulation class : F Service factor : 1.15 Moment of inertia (J) : 1.82 sq.ft.lb Design : B		Locked rotor time : 30s (cold) 17s (hot) Temperature rise : 80 K Duty cycle : Cont.(S1) Ambient temperature : -20°C to +40°C Altitude : 1000 m.a.s.l. Cooling method : IC01 - ODP Mounting : F-1 Rotation ¹ : Both (CW and CCW) Noise level ² : 64.0 dB(A) Starting method : Direct On Line Approx. weight ³ : 189 lb			
Output	50%	75%	100%	Foundation loads	
Efficiency (%)	91.7	92.4	93.0	Max. traction : 599 lb	
Power Factor	0.62	0.73	0.80	Max. compression : 788 lb	
		<u>Drive end</u>	<u>Non drive end</u>		
Bearing type	:	6309 Z C3	6208 Z C3		
Sealing	:	Without Bearing Seal	Without Bearing Seal		
Lubrication interval	:	20000 h	20000 h		
Lubricant amount	:	13 g	8 g		
Lubricant type	:	Mobil Polyrex EM			
Notes USABLE @208V 41.1A SF 1.00 SFA 41.1A					
This revision replaces and cancel the previous one, which must be eliminated. (1) Looking the motor from the shaft end. (2) Measured at 1m and with tolerance of +3dB(A). (3) Approximate weight subject to changes after manufacturing process. (4) At 100% of full load.			These are average values based on tests with sinusoidal power supply, subject to the tolerances stipulated in NEMA MG-1.		
Rev.	Changes Summary		Performed	Checked	Date
Performed by					
Checked by				Page	Revision
Date	07/11/2023			1 / 1	



Color Munsell N 1 matte black											
Painting plan 207N											
Mounting F-1/B3R(D)											
								USERADMIN	00		
ECM	LOC	SUMMARY OF MODIFICATIONS					EXECUTED	CHECKED	RELEASED	DATE	VER
EXECUTED	USERADMIN	THREE PH. MOTOR ROLLED STEEL NEMA PREM. EFF.						PREVIEW WDD 00			
CHECKED		FRAME 254/6T IP21 ODP									
RELEASED											
REL. DATE		WMO	Jaragua do Sul	Product Engineering	SHEET	1 / 1					

15 HP 04 Poles 60 Hz

Dimensions in inches XME A3



MADE IN MEXICO

MAT: 12502805 CC029A

W01.T00IC0X0N

MODEL 015180T3E254T-S

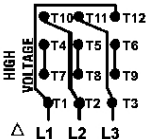
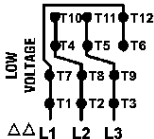
08NOV2023 S/N:

PH 3	Hz 60	HP 15
FR 254/6T		kW 11
DUTY CONT.		V 230/460
ALT 1000 m.a.s.l		A 37.2/18.6
INS CL F ΔT 80K		SFA 42.8/21.4
AMB 40°C	DES B	SF 1.15
ENCL ODP	CODE H	PF 0.80
		RPM 1775
		NEMA NOM. EFF 93.0%

ALTERNATE RATING: 15HP 50Hz 190-220/380-415V SF1.15
 43.8-39.4/21.9-20.9A 1465RPM EFF 89.7% (IE1) IEC 60034-1

Inverter duty motor For 60Hz use on VPWM 1000:1 VT, 5:1 CT

DE 6309-Z-C3	ODE 6208-Z-C3	MOBIL POLYREX EM	20000h
--------------	---------------	------------------	--------



- T1-BLU T2-WHT
- T3-ORG T4-YEL
- T5-BLK T6-GRY
- T7-PNK T8-RED
- T9-RED BRK
- T10-CURRY
- T11-GRN T12-VLT

INTERCHANGE ANY TWO LINE WIRES TO REVERSE THE ROTATION



WARNING: Motor must be grounded in accordance with local and national electrical codes to prevent serious electrical shocks. Disconnect power source before servicing unit.



AVERTISSEMENT: Le moteur doit être mis à la terre conformément aux codes électriques locaux et nationaux afin d'éviter tout choc électrique grave. Déconnectez l'alimentation avant l'entretien de la machine.